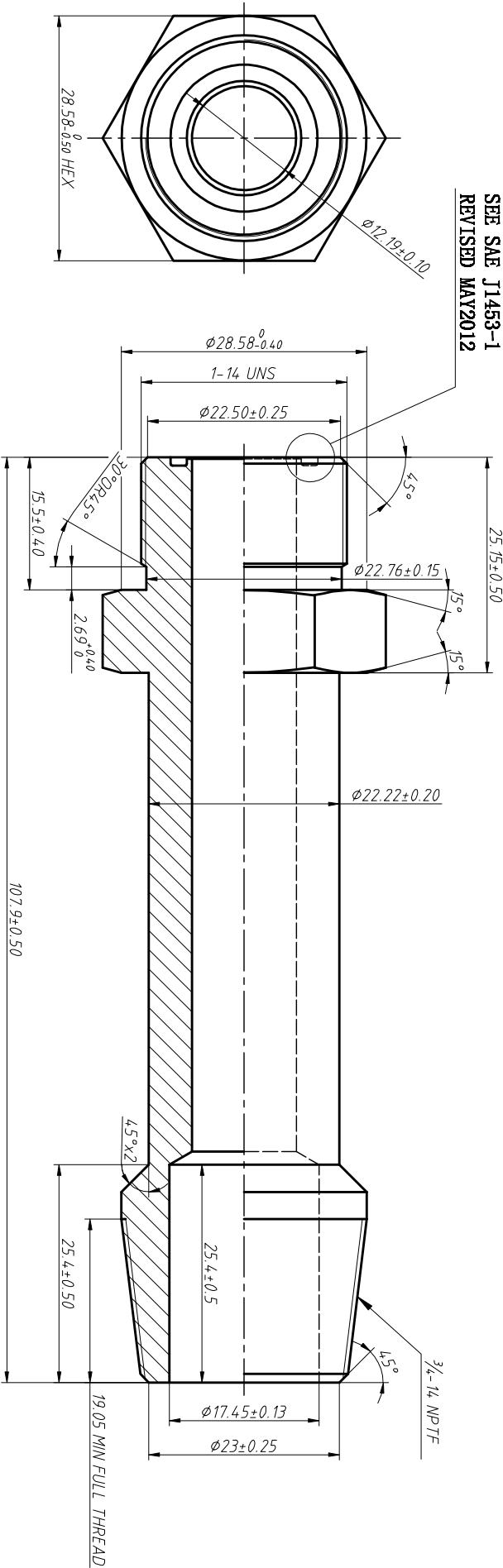


REV	DATE	REVISION DETAILS	APPD
更改号	日期	更改内容	审核并批准
A	JAN. 02. 2020	drawing update	

SEE SAE J1453-1  
REVISED MAY2012



UNLESS SPECIFIED  
ALL DIMENSIONS IN mm,  
MACHINED SURFACES Ra=3.2um,  
ANGLE TOLERANCES  $\pm 5^\circ$ ,  
Other tolerance except angles,  
in accordance with  
GB/T1804-2000(ISO2768-1)-m  
and GB/T1184-1996(ISO2768-2)-m

其它事项,  
图示尺寸单位为mm,  
未注机加工表面粗糙度 Ra=3.2um,  
未注角度公差  $\pm 5^\circ$ ,  
其它未注公差 (除角度外) 均按:  
GB/T1804-2000(ISO2768-1)-m 和  
GB/T1184-1996(ISO2768-2)-m

Zhejiang Gaocheng Autoparts Co.,Ltd			
PART No	40265-10FS-LL-12 CG		
零件名			
SCALE:	APPD:	DRN:	
批准	批准	制图	余德胜
DATE:	日期	CHK:	詹永斌
NTS		审核	2020. 01. 02
MATERIAL	Chinese steel 45		
FINISH	Remove all sharp edges,burrs,silvers and swarf, break all edges 0.127-0.254mm. ZINC PLATING WITH 8um MICRONS MINIMUM PLATING THICKNESS AND TRIVALENT CHROMATE PASSIVATION AND WITHSTAND 96 HRS TO WHITE / 144 HS TO RED RUST IN SALT SPRAY TEST.		
	材质45# 去除所有毛刺, 铁屑等残留物, 锐边倒钝0.127-0.254mm. 镀锌, 三价铬钝化, 银白色, 盐雾试验96小时无白锈, 144小时无红锈, 镀锌层厚度大于0um.		