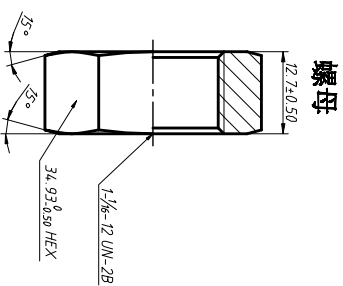
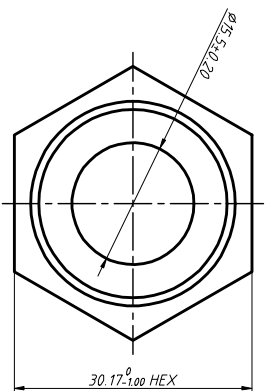
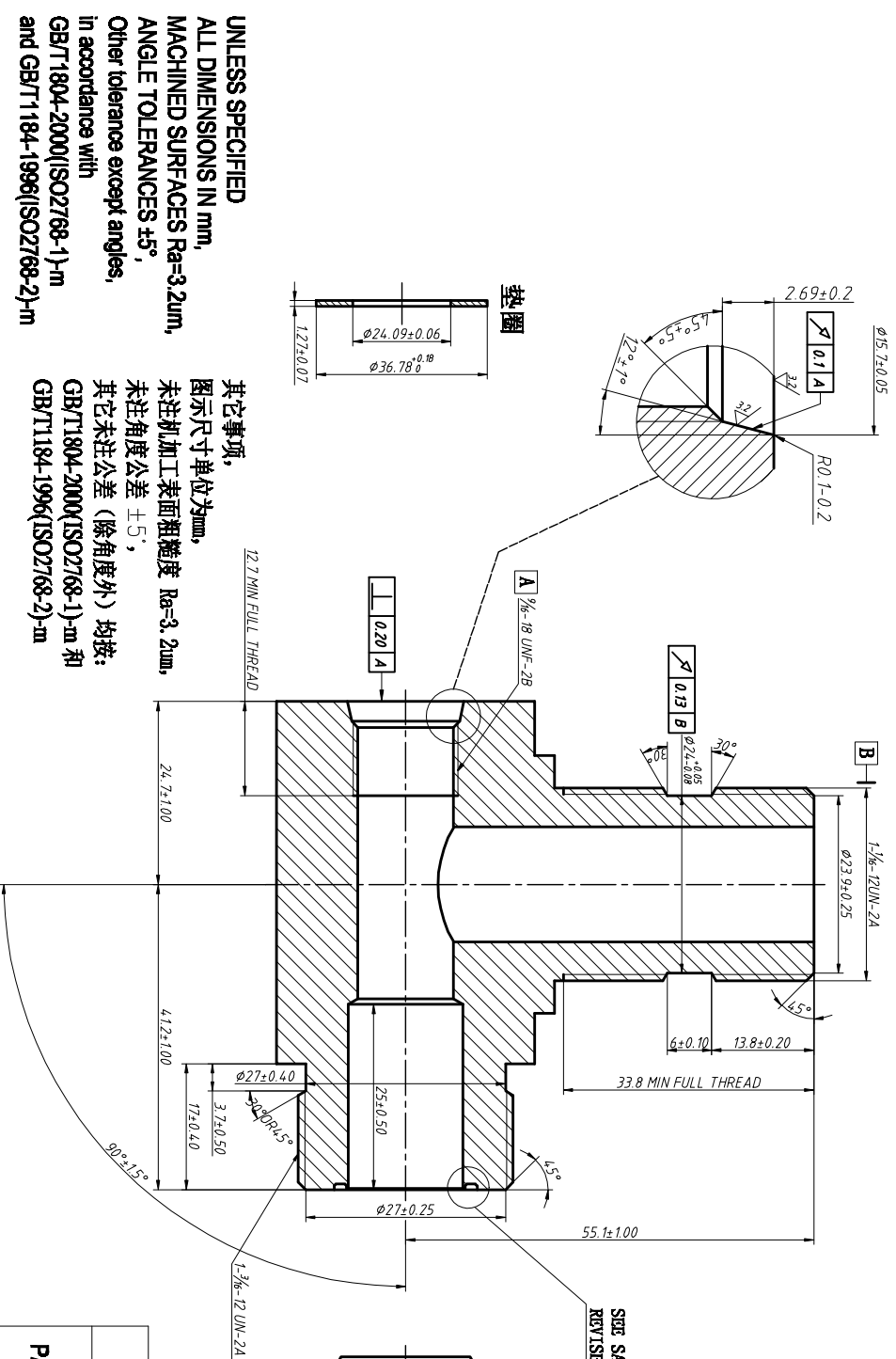
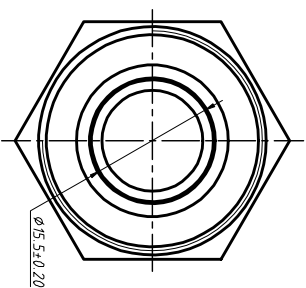


| REV | DATE | REVISION DETAILS | APPD |
|----------|---------------------|------------------------|-------|
| 更改号 A | 日期 JAN. 06. 2020 | 更改内容 drawing update | 审核并批准 |



SEE SAE J1453-1
REVISED MAY2012



UNLESS SPECIFIED
 ALL DIMENSIONS IN mm,
 MACHINED SURFACES Ra=3.2um,
 ANGLE TOLERANCES $\pm 5^\circ$,
 Other tolerance except angles,
 in accordance with
 GB/T1804-2000(ISO2768-1)-m
 and GB/T1184-1996(ISO2768-2)-m

其它事项,
 图示尺寸单位为mm,
 未注加工表面粗糙度 Ra=3.2um,
 未注角度公差 $\pm 5^\circ$,
 其它未注公差 (除角度外) 均按:
 GB/T1804-2000(ISO2768-1)-m 和
 GB/T1184-1996(ISO2768-2)-m

MATERIAL Chinese steel 45

材质 45#

FINISH

Remove all sharp edges,burrs,slivers and swarf, break all edges 0.127-0.254mm.
 ZINC PLATING WITH 8um MICRONS MINIMUM PLATING THICKNESS AND IRVARIANT CHROMATE PASSIVATION
 AND WITHSTAND 96 HRS TO WHITE / 144 HS TO RED RUST IN SALT SPRAY TEST.

去除所有毛刺, 铁屑等残留物, 破边倒钝0.127-0.254mm.
 镀锌, 三价钝化, 银白色, 盐雾试验96小时无白锈, 144小时无红锈, 镀锌层厚度大于8um.

| | |
|-------------------------------------|----------------------|
| Zhejiang Gaocheng Autoparts Co.,Ltd | |
| PART No 零件名 | 40632-12FS-6PT-12NW0 |
| SCALE: 批注 | APPD: 余德胜 |
| DATE: 日期 | 2020.01.06 |
| NTS | 制图 2020.01.06 |
| | CHK: 审核 |
| | 詹永斌 2020.01.06 |