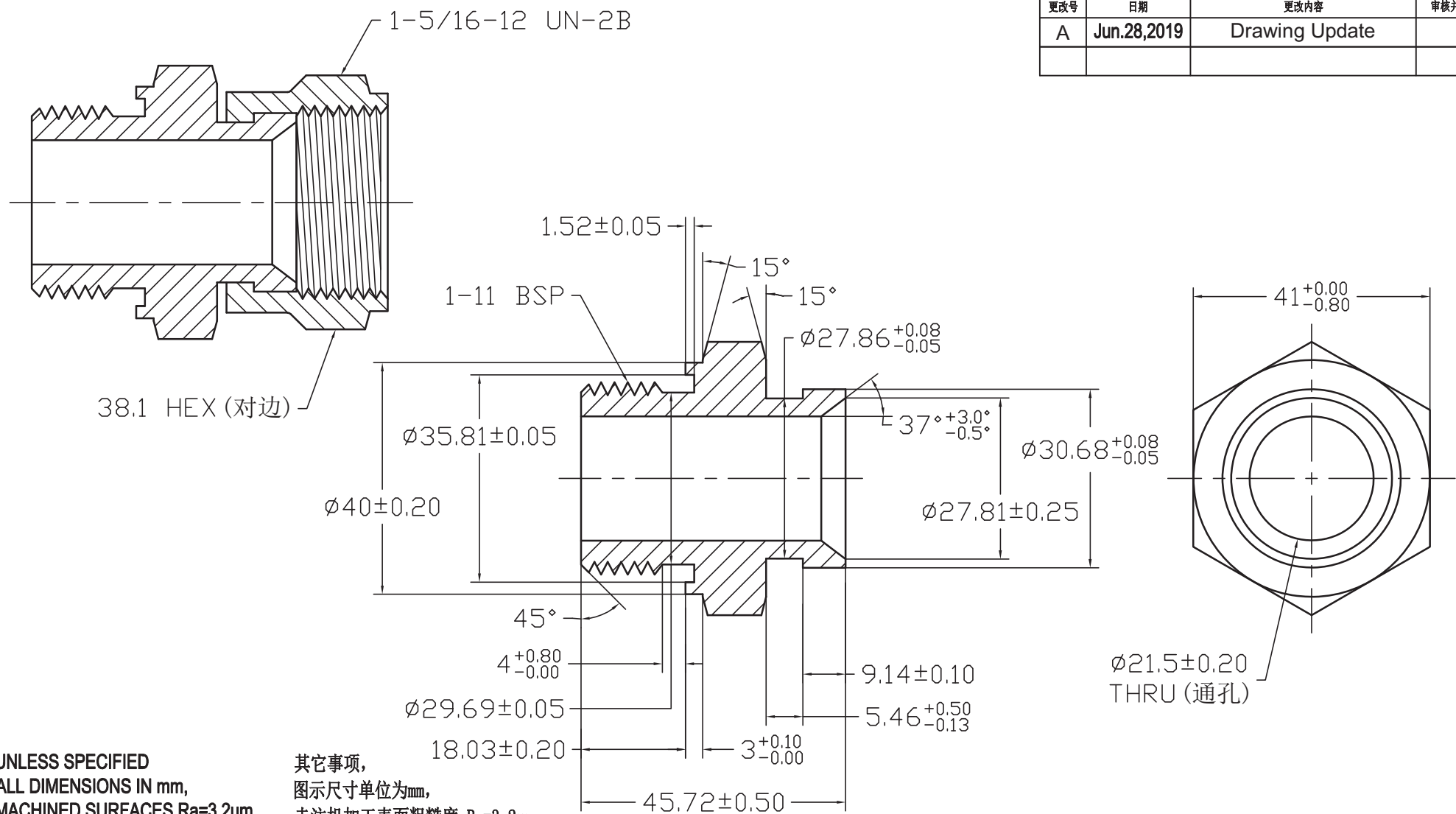


| REV 更改号 | DATE 日期 | REVISION DETAILS 更改内容 | APPD 审核并批准 |
|------------|-------------|--------------------------|---------------|
| A | Jun.28,2019 | Drawing Update | |
| | | | |



UNLESS SPECIFIED
ALL DIMENSIONS IN mm,
MACHINED SURFACES Ra=3.2um,
ANGLE TOLERANCES ±5° ,
Other tolerance except angles,
in accordance with
GB/T1804-2000(ISO2768-1)-m
and GB/T1184-1996(ISO2768-2)-m

其它事项,
图示尺寸单位为mm,
未注机加工表面粗糙度 Ra=3.2um,
未注角度公差 ±5° ,
其它未注公差 (除角度外) 均按:
GB/T1804-2000(ISO2768-1)-m 和
GB/T1184-1996(ISO2768-2)-m

| Zhejiang Gaocheng Autoparts Co.,Ltd | | | |
|-------------------------------------|------------------|------------|-------------------|
| PART No 零件名 | 40823-G16EO-16SW | | |
| SCALE: | APPD: 批准 | DRN: 制图 | Pan 2019.06.28 |
| NTS | DATE: 日期 | CHK: 审核 | Pan 2019.06.28 |

| | |
|----------|--|
| MATERIAL | Chinese steel 45 |
| FINISH | Remove all sharp edges,burrs,slivers and swarf, break all edges 0.127-0.254mm. ZINC PLATING WITH 8um MICRONS MINIMUM PLATING THICKNESS AND TRIVALENT CHROMATE PASSIVATION AND WITHSTAND 96 HRS TO WHITE / 144 HS TO RED RUST IN SALT SPRAY TEST. 镀锌, 三价铬钝化, 银白色, 盐雾试验96小时无白斑, 144小时无红锈, 镀锌层厚度大于8um. |