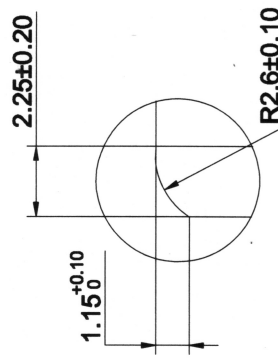
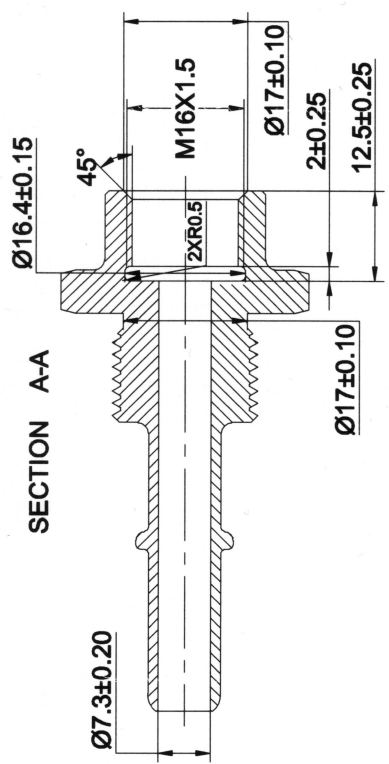
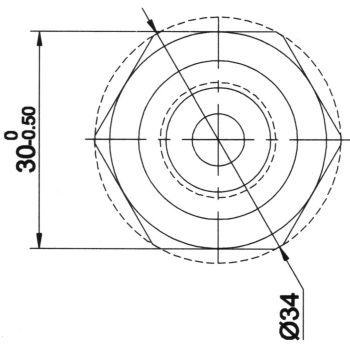
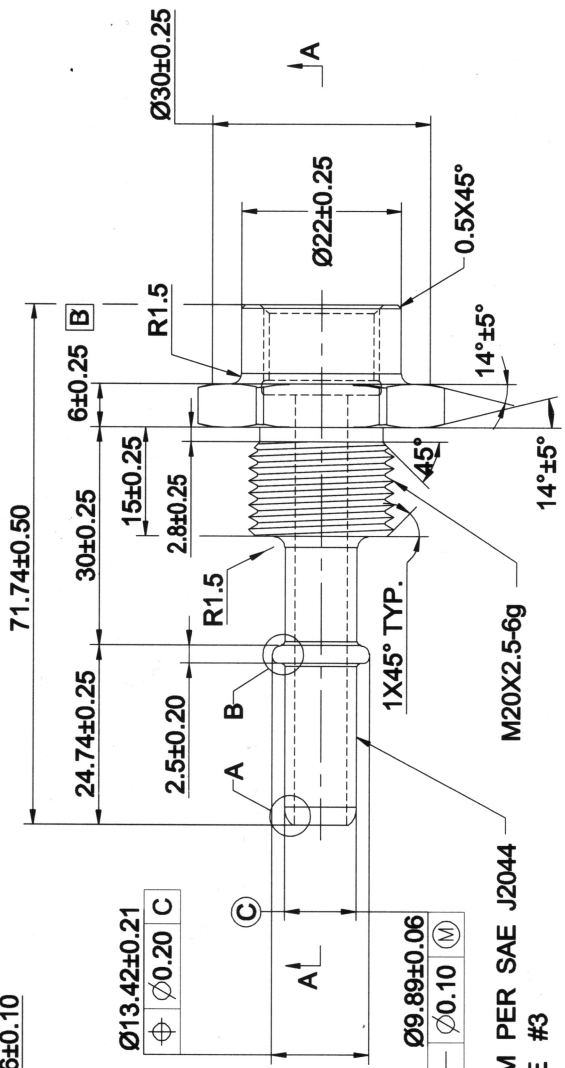


REV 更改号	DATE 日期	REVISION DETAILS 更改内容	APPD 审核并批准
A	Jul.21.2016	Drawing Update	
B	Apr.09.2021	ADD 6+0.25/-0.25 and unless angles tolerance +5/-5 degree.	



SCALE B  
5:1



END FORM PER SAE J2044  
SEE NOTE #3

UNLESS SPECIFIED  
ALL DIMENSIONS IN mm,  
MACHINED SURFACES Ra=3.2um,  
ANGLE TOLERANCES ±5°,  
Other tolerance except angles,  
in accordance with  
GB/T1804-2000(ISO2768-1)-m  
and GB/T1184-1996(ISO2768-2)-m

其它事项,  
图示尺寸单位为mm,  
未注机加工表面粗糙度 Ra=3.2um,  
未注角度公差 ±5°,  
其它未注公差 (除角度外) 均按:  
GB/T1804-2000(ISO2768-1)-m 和  
GB/T1184-1996(ISO2768-2)-m

B

Zhejiang Gaocheng Autoparts Co.,Ltd

PART No  
零件名  
41139-10MMQC-M20-M16

SCALE: NTS	批准 日期	DRN: 制图 21.04.09	APPD: 审核 21.04.09
		CHK: 日期	CHK: 日期
			Li Jumbiao 21.04.09

MATERIAL  
Chinese steel 45

FINISH  
Remove all sharp edges,burrs,silvers and swarf, break all edges 0.127-0.254mm.  
ZINC PLATING WITH 8um MICRONS MINIMUM PLATING THICKNESS AND TRIVALENT CHROMATE PASSIVATION  
AND WITHSTAND 96 HRS TO WHITE / 144 HS TO RED RUST IN SALT SPRAY TEST.

去除所有毛刺, 锐角等残留物, 锐边倒钝0.127-0.254mm.  
镀锌, 三价铬钝化, 膜白色, 盐雾试验96小时无白锈, 144小时无红锈, 镀锌层厚度大于8um.