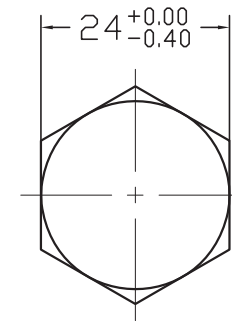
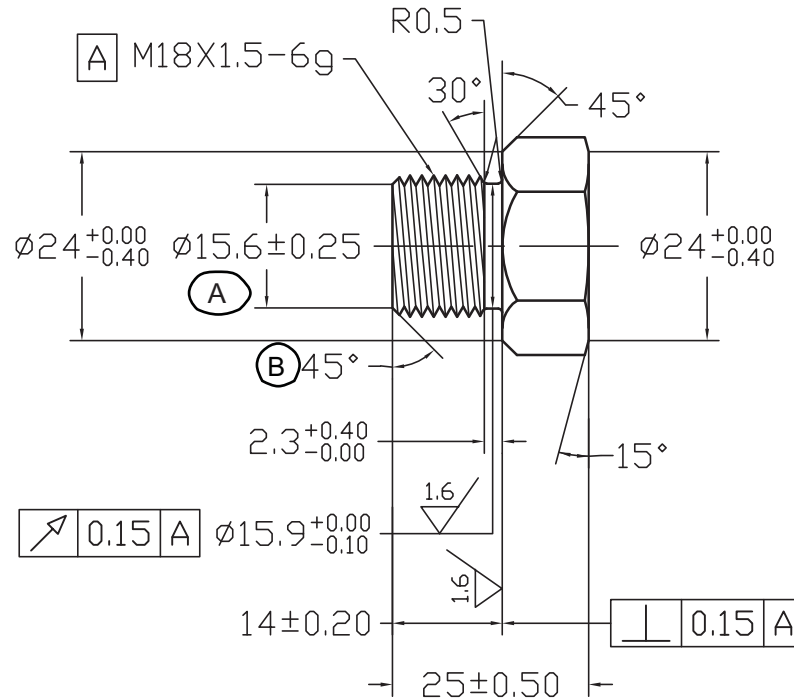


REV 更改号	DATE 日期	REVISION DETAILS 更改内容	APPD 审核并批准
A B	Jun.30,2019	Change 1x45°to 45°,add Dia.15.6±0.25	



UNLESS SPECIFIED
ALL DIMENSIONS IN mm,
MACHINED SURFACES Ra=3.2um,
ANGLE TOLERANCES $\pm 5^\circ$,
Other tolerance except angles,
in accordance with
GB/T1804-2000(ISO2768-1)-m
and GB/T1184-1996(ISO2768-2)-m

其它事项,
图示尺寸单位为mm,
未注机加工表面粗糙度 Ra=3.2um,
未注角度公差 $\pm 5^\circ$,
其它未注公差(除角度外)均按:
GB/T1804-2000(ISO2768-1)-m 和
GB/T1184-1996(ISO2768-2)-m

Zhejiang Gaocheng Autoparts Co.,Ltd			
PART No 零件名	41225-M18(PLUG)		
SCALE:	APPD: 批准	DRN: 制图	Pan 2019.06.30
NTS	DATE: 日期	CHK: 审核	Pan 2019.06.30

MATERIAL Chinese steel 45

FINISH Remove all sharp edges,burrs,slivers and swarf, break all edges 0.127-0.254mm.
ZINC PLATING WITH 8um MICRONS MINIMUM PLATING THICKNESS AND TRIVALENT CHROMATE PASSIVATION
AND WITHSTAND 96 HRS TO WHITE / 144 HS TO RED RUST IN SALT SPRAY TEST.

去除所有毛刺,铁屑等残留物,锐边倒钝0.127-0.254mm.
镀锌,三价铬钝化,银白色,盐雾试验96小时无白斑,144小时无红锈,镀锌层厚度大于8um.