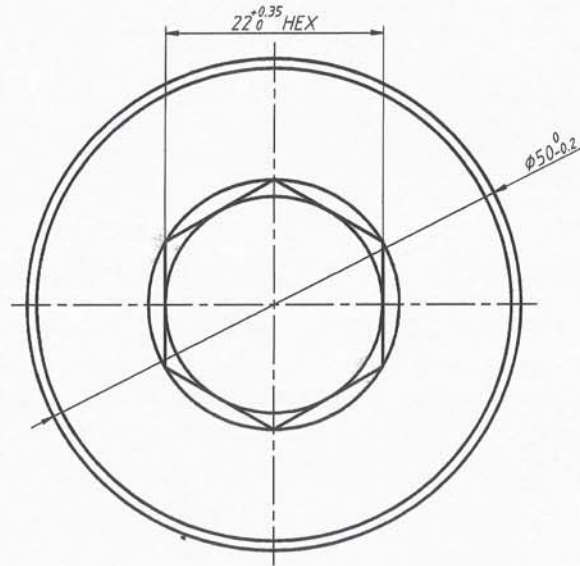
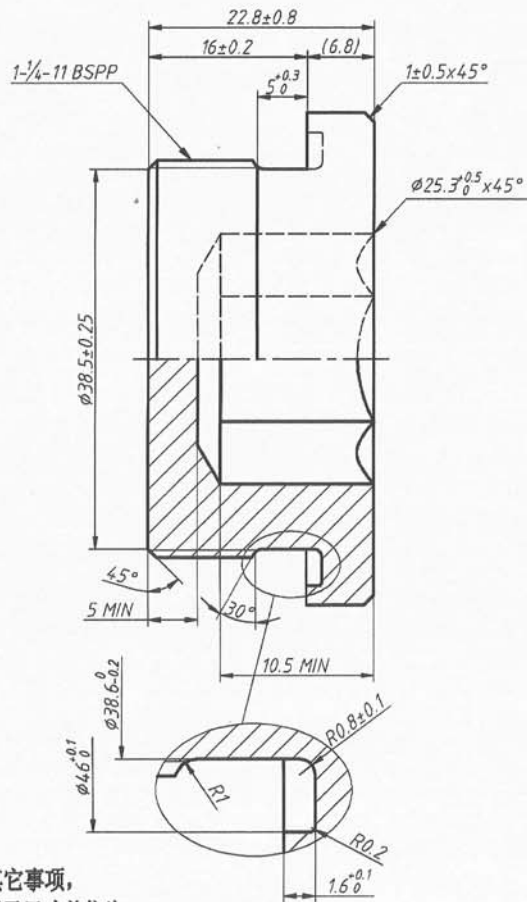


REV 更改号	DATE 日期	REVISION DETAILS 更改内容	APPD 审核并批准
A	Mar. 13, 2021	Production issue	
B	Mar. 29	Change the thread from 1-1/4-11 to 1-1/4-11	



UNLESS SPECIFIED
ALL DIMENSIONS ARE IN mm,
ROUGHNESS ON
HEXAGON SOCKET SURFACE ✓
MACHINED SURFACES Ra=3.2um,
ANGLE TOLERANCES ±5°,
Other except angles,
in accordance with
GB/T1804-2000(ISO2768-1)-m
and GB/T1184-1996(ISO2768-2)-m

其它事项,
图示尺寸单位为mm,
内六角面粗糙度 ✓
未注机加工表面粗糙度 Ra=3.2um,
未注角度公差 ±5°,
其它未注公差 (除角度外) 均按:
GB/T1804-2000(ISO2768-1)-m 和
GB/T1184-1996(ISO2768-2)-m

Zhejiang Gaocheng Autoparts Co.,Ltd



PART No 零件名	41503-PLG-G20-E0
SCALE:	APPD: 余德胜 批准 2021.03.13
NTS	DRN: 制图 DATE: 日期 詹永斌 审核 2021.03.13

MATERIAL Chinese steel 45

材质 45号钢

FINISH

Remove all sharp edges,burrs,slivers and swarf, break all edges 0.127~0.254mm.
ZINC PLATING WITH 8um MICRONS MINIMUM PLATING THICKNESS AND TRIVALENT CHROMATE PASSIVATION
AND WITH-STAND 96 HRS TO WHITE / 144 HS TO RED RUST IN SALT SPRAY TEST.

去除所有毛刺, 铁屑等残留物, 锐边倒钝0.127-0.254mm.
镀锌, 三价铬钝化, 银白色, 盐雾试验96小时无白斑, 144小时无红锈, 镀锌层厚度大于8um.