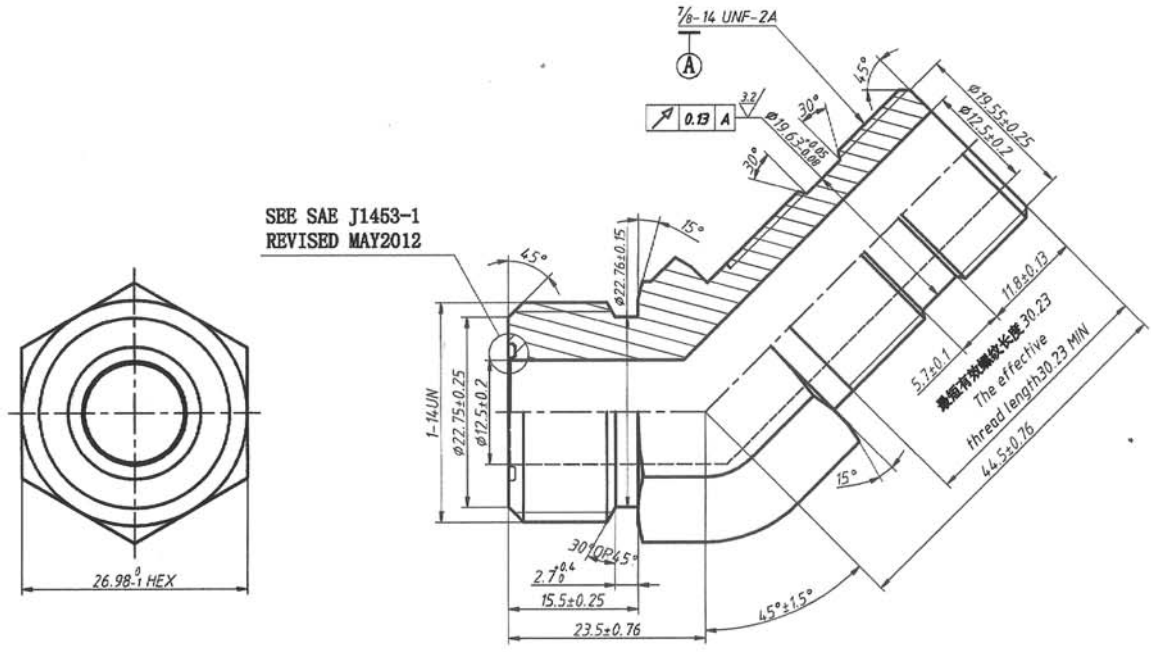
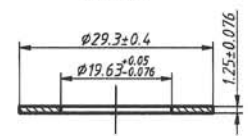


REV 更改号	DATE 日期	REVISION DETAILS 更改内容	APPD 审核并批准
A	Jul. 02. 2021	Production issue	<i>R.v</i>

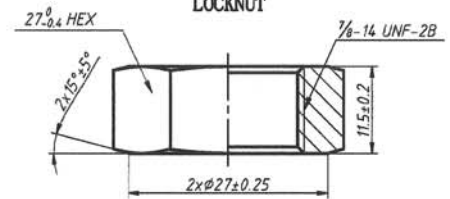


SEE SAE J1453-1
REVISED MAY2012

垫圈
WASHER



螺母
LOCKNUT



UNLESS SPECIFIED
ALL DIMENSIONS ARE IN mm,
ROUGHNESS ON
HEXAGON SURFACE ∇
MACHINED SURFACE $Ra=3.2\mu m$,
ANGLES TOLERANCE $\pm 5^\circ$,
DIMENSIONS TOLERANCE $\pm 0.25mm$,
REMOVE ALL BURRS, SLIVERS AND
SWARF,
BREAK ALL SHARP EDGES $R<0.5mm$

其它事项,
图示尺寸单位为mm,
六角面粗糙度 ∇
未注机加工表面粗糙度 $Ra=3.2\mu m$,
未注角度公差 $\pm 5^\circ$,
未注尺寸公差 $\pm 0.25mm$,
去除所有毛刺及金属切屑,
锐边倒钝 $R<0.5mm$.

THIRD ANGLE PROJECTION

Zhejiang Gaocheng Autoparts Co.,Ltd

PART No 零件名 41525-ELB-10FS-10NWO

SCALE: APPD: 批准 *R.v* DRN: 余德胜
DATE: 日期 14/5/21 CHK: 詹永斌
NTS 审核 2021.06.02

MATERIAL	Chinese steel 45#	材料 45号钢
FINISH	ZINC PLATING WITH 8um MICRONS MINIMUM PLATING THICKNESS AND TRIVALENT CHROMATE PASSIVATION AND WITHSTAND 96 HRS TO WHITE / 144 HS TO RED RUST IN SALT SPRAY TEST.	镀锌, 三价铬钝化, 银白色, 盐雾试验96小时无白斑, 144小时无红锈, 镀锌层厚度大于8um.