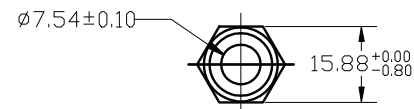
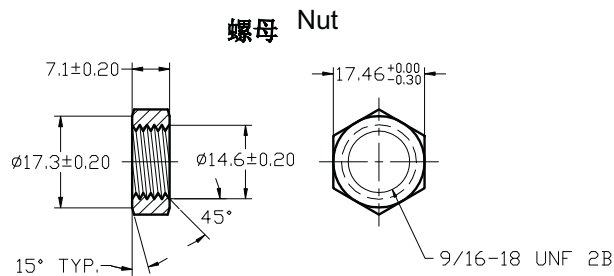
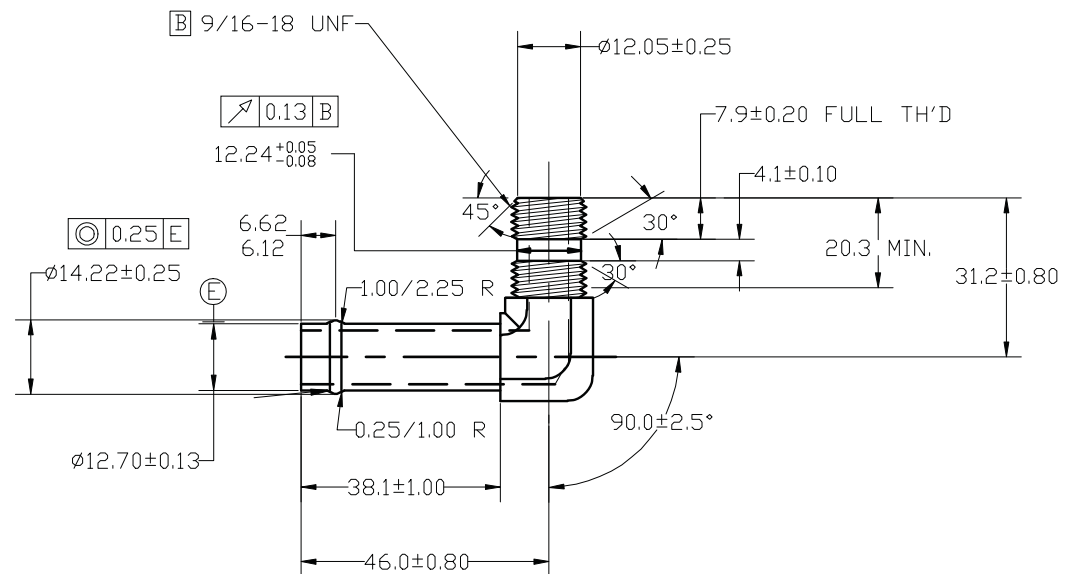
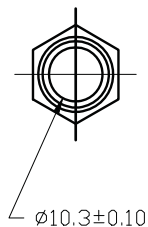
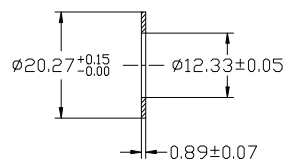


REV 更改号	DATE 日期	REVISION DETAILS 更改内容	APPD 审核并批准
A	Jan.2,2020	Drawing Update	



垫圈 Washer



**UNLESS SPECIFIED
ALL DIMENSIONS IN mm,
MACHINED SURFACES Ra=3.2um,
ANGLE TOLERANCES ±5°,
Other tolerance except angles,
in accordance with
GB/T1804-2000(ISO2768-1)-m
and GB/T1184-1996(ISO2768-2)-m**

**其它事项,
图示尺寸单位为mm,
未注机加工表面粗糙度 Ra=3.2um,
未注角度公差 ±5°,
其它未注公差 (除角度外) 均按:
GB/T1804-2000(ISO2768-1)-m 和
GB/T1184-1996(ISO2768-2)-m**

Zhejiang Gaocheng Autoparts Co.,Ltd		
PART No 零件名	4601-08-06	
SCALE:	APPD: 批准	DRN: Sun Jianghuan 制图 2020.1.2.
NTS	DATE: 日期	CHK: Li Junbiao 审核 2020.1.2.

MATERIAL	Chinese steel 45
FINISH	Remove all sharp edges,burrs,slivers and sharp break all edges 0.127-0.254mm. ZINC PLATING WITH 8um MICRONS MINIMUM PLATING THICKNESS AND TRIVALENT CHROMATE PASSIVATION AND WITHSTAND 96 HRS TO WHITE / 144 HS TO RED RUST IN SALT SPRAY TEST. 全数所有毛刺、铁屑等必须清除，保证倒角R.127-0.254mm。 镀锌，三价铬钝化，膜白色，盐雾试验96小时无白锈，144小时无红锈，镀锌层厚度大于8um。