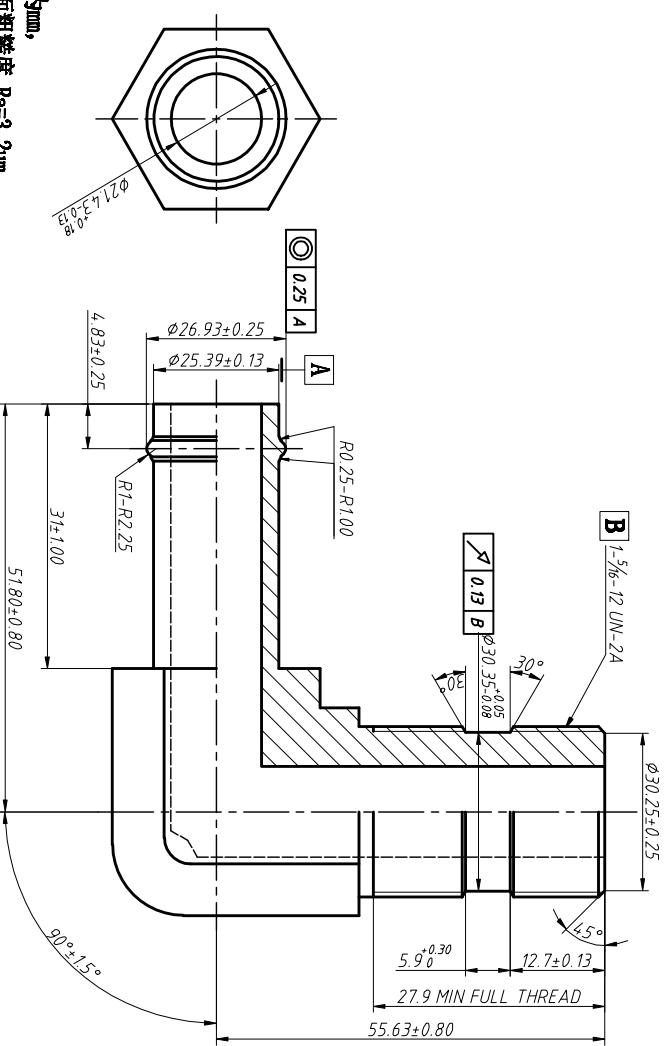
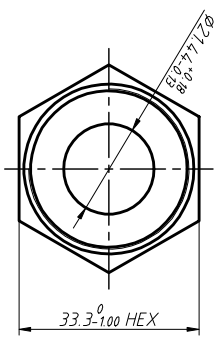
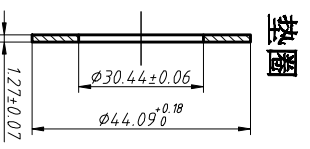
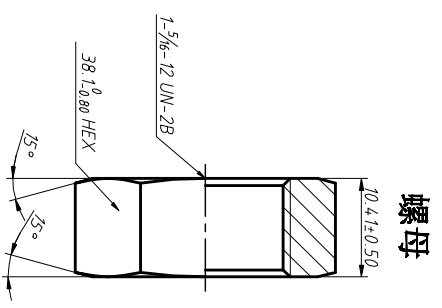


REV	DATE	REVISION DETAILS	APPD
更改号 A	日期 JAN. 04. 2020	更改内容 drawing update	审核并批准



**UNLESS SPECIFIED  
ALL DIMENSIONS IN mm,  
MACHINED SURFACES Ra=3.2um,  
ANGLE TOLERANCES ±5',  
Other tolerance except angles,  
in accordance with  
GB/T1804-2000(ISO2768-1)-m  
and GB/T1184-1996(ISO2768-2)-m**

**其它事项,  
图示尺寸单位为mm,  
未注加工表面粗糙度 Ra=3.2um,  
未注角度公差 ±5',  
其它未注公差 (除角度外) 均按:  
GB/T1804-2000(ISO2768-1)-m 和  
GB/T1184-1996(ISO2768-2)-m**

**MATERIAL**  
Chinese steel 45

**材质** 45#

**FINISH**  
Remove all sharp edges,burrs,slivers and swarf, break all edges 0.127-0.254mm.  
ZINC PLATING WITH 8um MICRONS MINIMUM PLATING THICKNESS AND TRIVALENT CHROMATE PASSIVATION  
AND WITHSTAND 96 HRS TO WHITE / 144 HS TO RED RUST IN SALT SPRAY TEST.

去油所有毛刺, 铁屑等残留物, 锐边倒钝0.127-0.254mm.  
镀锌: 三价钝化, 银白色, 盐雾试验96小时无白锈, 144小时无红锈, 镀锌层厚度大于0mm.

<b>Zhejiang Gaocheng Autoparts Co., Ltd</b>	
PART No 零件名	4601-16-16-NW0
SCALE: 批注	APPD: 余德胜
DATE: 日期	2020.01.04
NTS	CHK: 审核 詹永斌 2020.01.04