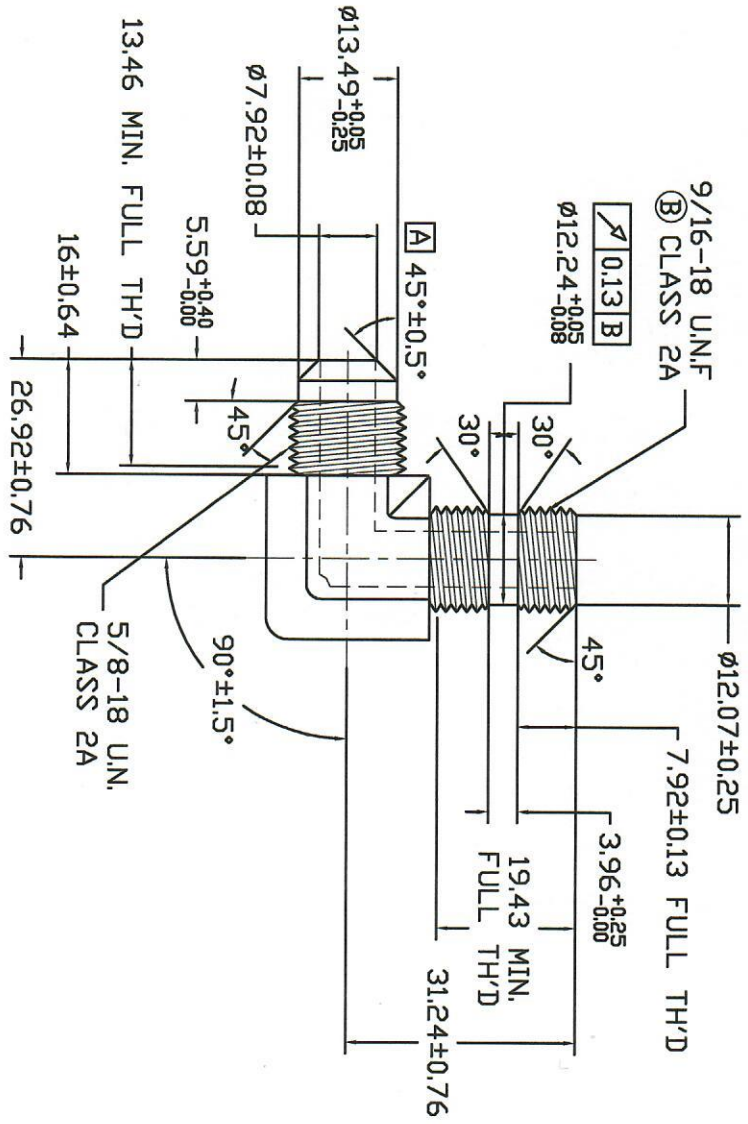
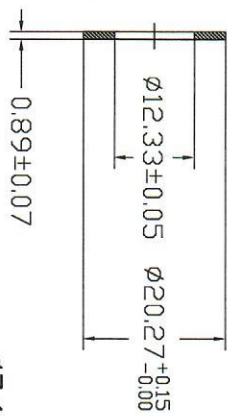
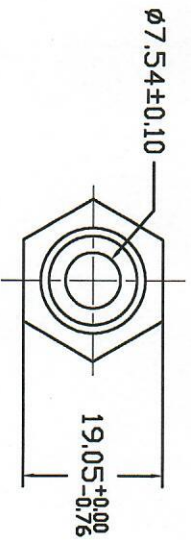
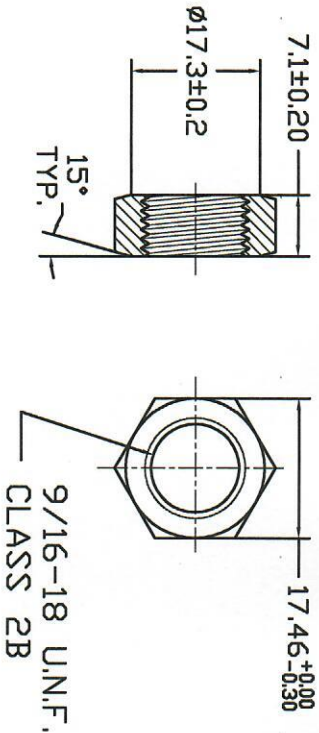


LOCKNUT



UNLESS SPECIFIED
 ALL DIMENSIONS IN mm,
 MACHINED SURFACES Ra=3.2um,
 ANGLE TOLERANCES ±5°,
 Other tolerance except angles,
 in accordance with
 GB/T1804-2000(ISO2768-1)-m
 and GB/T1184-1996(ISO2768-2)-m

其它事项,
 图示尺寸单位为mm,
 未注机加工表面粗糙度 Ra=3.2um,
 未注角度公差 ±5°,
 其它未注公差 (除角度外) 均按:
 GB/T1804-2000(ISO2768-1)-m 和
 GB/T1184-1996(ISO2768-2)-m

MATERIAL Chinese steel 45

FINISH Remove all sharp edges,burrs,sivers and swarf, break all edges 0.127-0.254mm, ZINC PLATING WITH 8um MICRONS MINIMUM PLATING THICKNESS AND TRIVALENT CHROMATE PASSIVATION AND WITHSTAND 96 HRS TO WHITE / 144 HS TO RED RUST IN SALT SPRAY TEST.

REV	DATE	REVISION DETAILS	APPD
A	Apr.02.2020	45°±1.0°改为45°±0.5° Change 45°±1.0° to 45°±0.5°	审核并批准

Zhejiang Gaocheng Autoparts Co.,Ltd

PART No 零件名
 5-6801-06-06NW□

SCALE: NTS
 APPD: 批准
 DATE: 日期
 DRN: Sun Jianghuan
 制图 20.04.02
 CHK: Li Junbiao
 审核 20.04.02

去除所有毛刺, 倒角等锐利物, 锐边倒角0.127-0.254mm.
 镀锌: 三价铬钝化, 银白色, 盐雾试验96小时无白锈, 144小时无红锈, 镀锌层厚度大于8um.