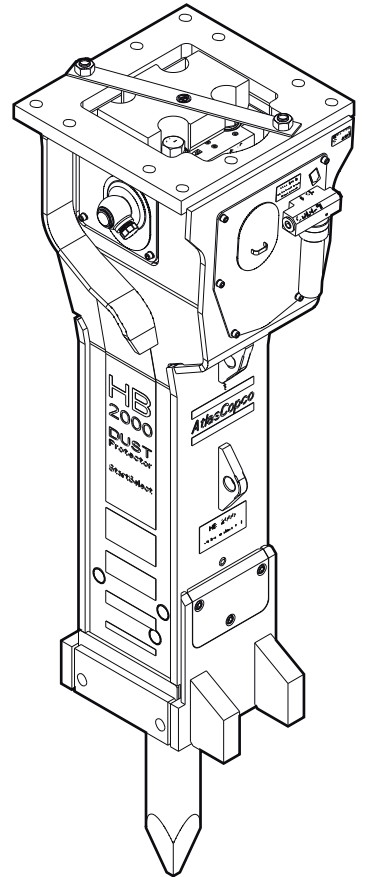


## Spare parts list Hydraulic breakers

Valid from serial number 50





# Contents

General note.....	5
Spare parts list.....	6
Hydraulic breaker HB 2000.....	6
Hydraulic breaker HB 2000 DustProtector.....	8
Percussion unit part 1: cylinder cover.....	10
Percussion unit part 2: cylinder.....	12
Percussion unit part 3: lower breaker part.....	14
Connecting kit for ContiLube® II.....	16
StartSelect - AutoStart or AutoStop.....	18
Optional parts.....	20
Tightening torques.....	21
Working tools.....	22
HB 2000.....	23
HB 2000 DustProtector.....	24
Accessories.....	25
Hydraulic hoses.....	25
Optional equipment.....	25
Kits.....	26
Label kit HB 2000.....	26
Label kit HB 2000 DustProtector.....	27
Seal kit.....	28
Plastic parts kit.....	28
Tensioning bolt kit.....	29
DustProtector kit.....	29
Noise protection kit.....	29
Lower breaker part kit (steel).....	30
Lower breaker part kit (cast iron).....	30
Lower breaker part kit DustProtector (steel).....	30
Lower breaker part kit DustProtector (cast iron).....	31
Expansion bolt kit.....	31
Accumulator repair kit.....	31
Dimensions.....	32
Dimensions HB 2000.....	32
Dimensions HB 2000 DustProtector.....	33



## General note

This spare parts list applies to the following:

Part number	Description
3363 1027 61	Hydraulic breaker HB 2000
3363 1044 17	Hydraulic breaker HB 2000 DustProtector

Use only authorized parts. Any damage or malfunction caused by the use of unauthorized parts is not covered by Warranty or Product Liability. Any unauthorized use or copying of the contents or any part thereof is prohibited. This applies in particular to trademarks, model denominations, part numbers, and drawings.

### Instructions for use

This spare parts list contains no safety regulations and is merely intended to assist in the ordering of spare parts.

For information on operating, servicing, or repairing, the relevant Safety and operating instructions must be consulted at all costs.

Please observe the safety instructions listed in the relevant Safety and operating instructions!

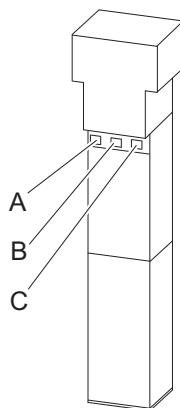
### Instructions of ordering

It is essential to indicate the serial number of the hydraulic attachment when ordering spare parts!

Please note the full identification number of your hydraulic attachment. This code can be found on the cylinder.

Determine the quantity of individual parts which are required and need to be ordered. The order must indicate the following details:

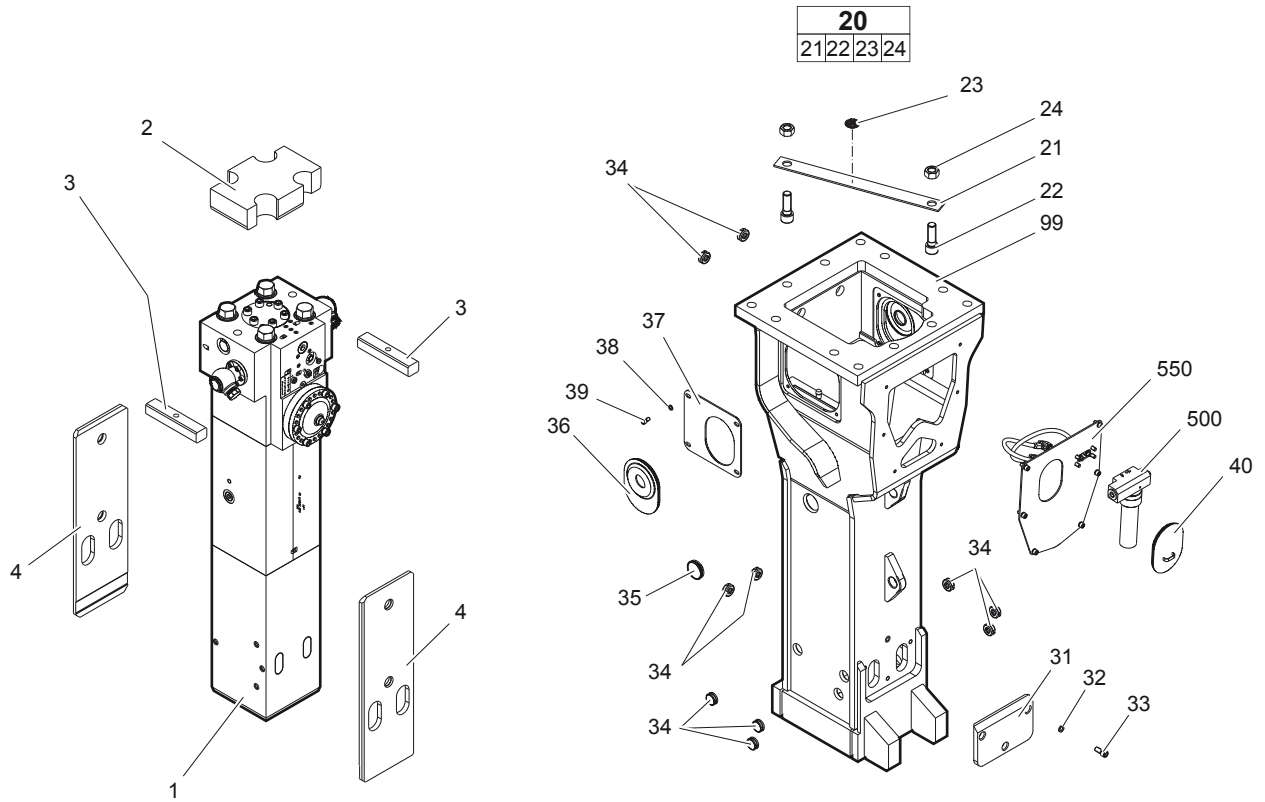
- full identification code of the hydraulic attachment
- required quantity
- part number
- description



- A. Cylinder number
- B. Type
- C. Serial number

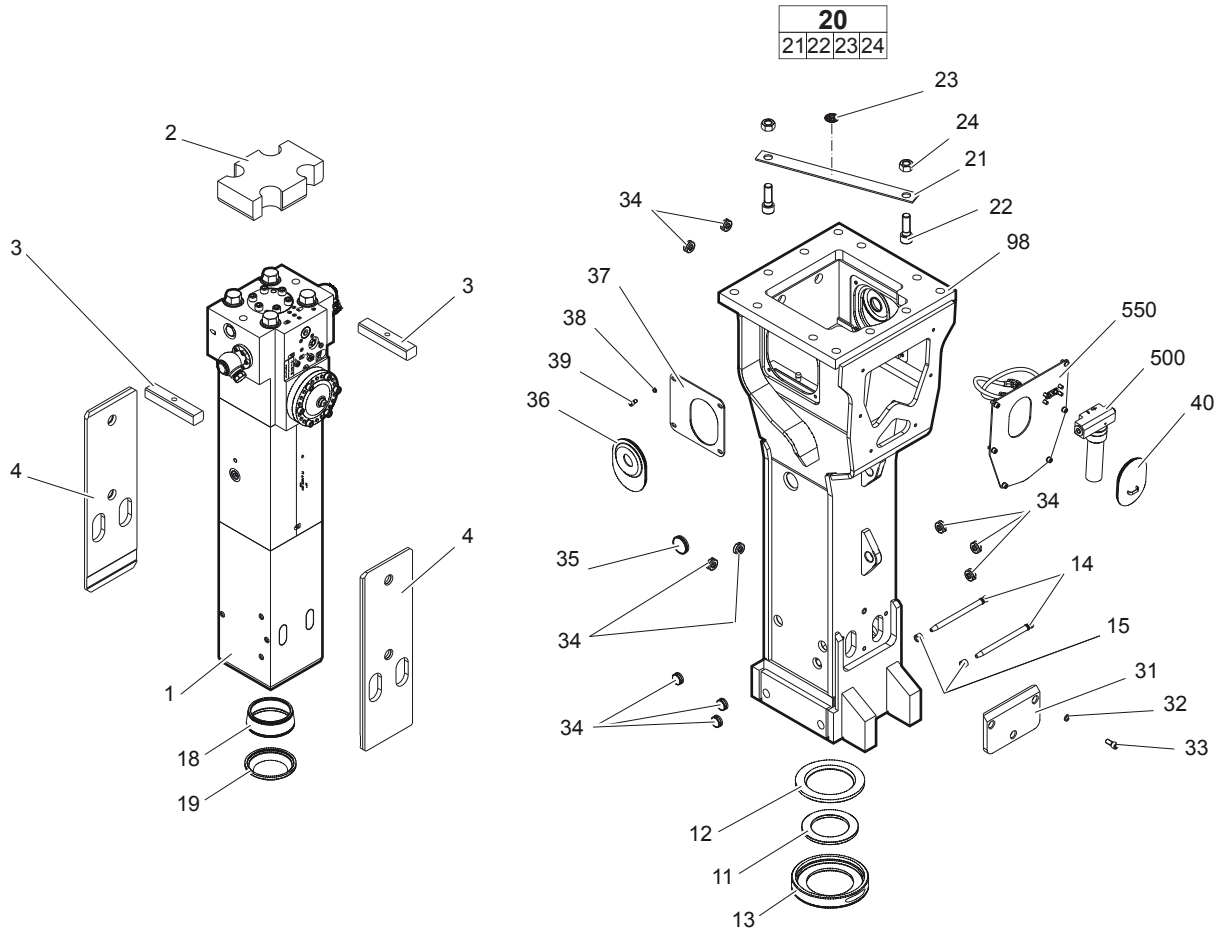
# Spare parts list

## Hydraulic breaker HB 2000



No.	Description	Remark	Quantity	Part number
1	Percussion unit	see separate chapter	1	3363 1092 01
2	Elastic pad		1	3363 1040 71
3	Shock absorber		2	3363 1040 73
4	Guide plate		2	3363 1059 35
<b>20(21-24)</b>	<b>Transport safety device complete</b>		1	3363 0833 43
21	Transport safety device		1	-
22	Allen screw		2	3360 0268 83
23	Label transport safety device		1	3363 0918 72
24	Nut		2	3360 1032 54
31	Plate		1	3363 1065 95
32	Pair of lock washers		3	3361 3337 03
33	Allen screw		3	3362 3281 13
34	Plug		10	3363 0860 15
35	Plug		1	3362 2678 93
36	Cover		2	3363 0311 81
37	Plate		2	3363 0948 19
38	Pair of lock washers		8	3361 8505 96
39	Allen screw		8	3362 3284 80
40	Cover		1	3363 0926 97
99	Breaker box		1	3363 1065 96
500	ContiLube® II	see separate <i>Safety and operating instructions</i>	1	3363 0671 23
550	Connecting kit ContiLube® II	see separate chapter	1	3363 1040 85

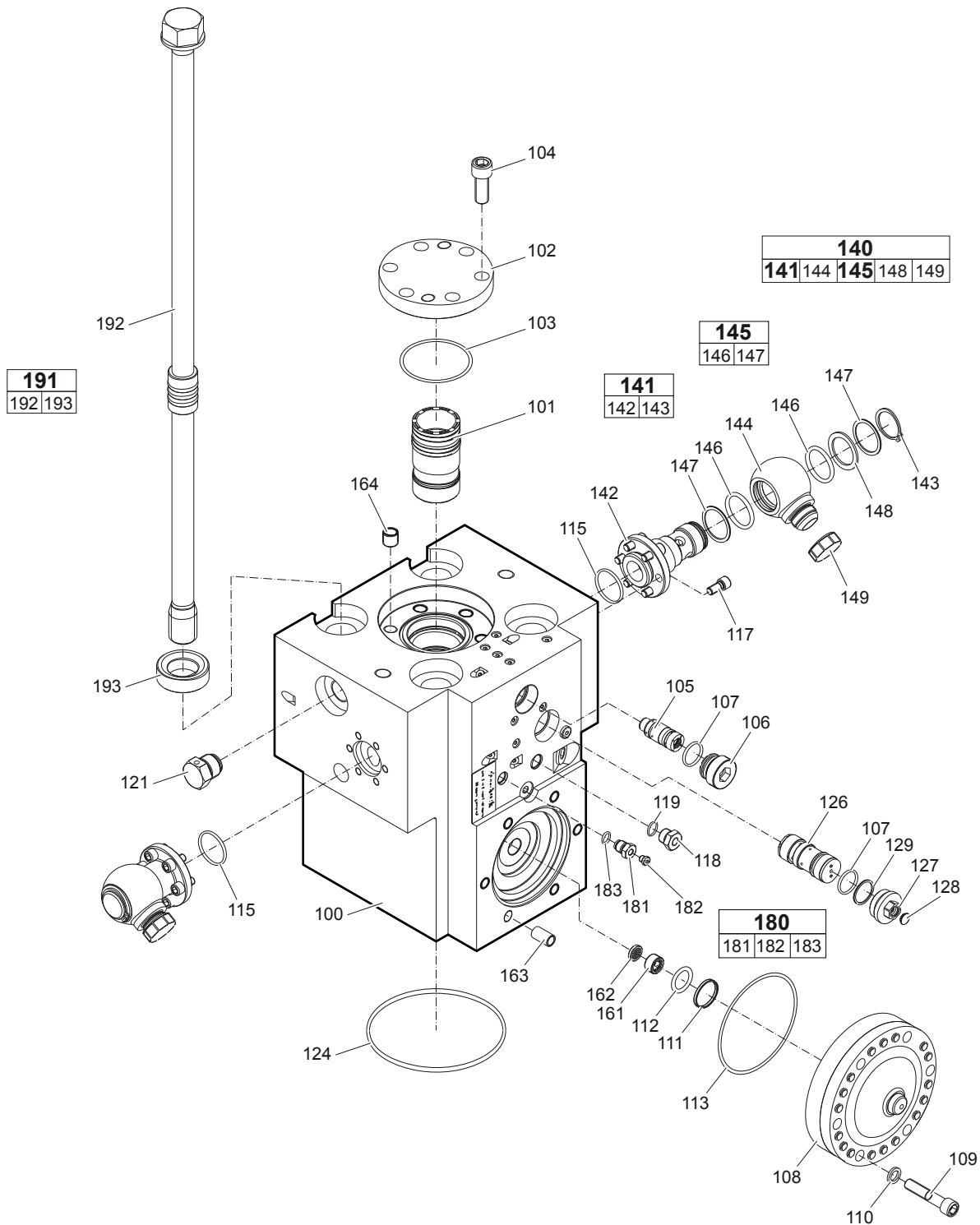
# Hydraulic breaker HB 2000 DustProtector





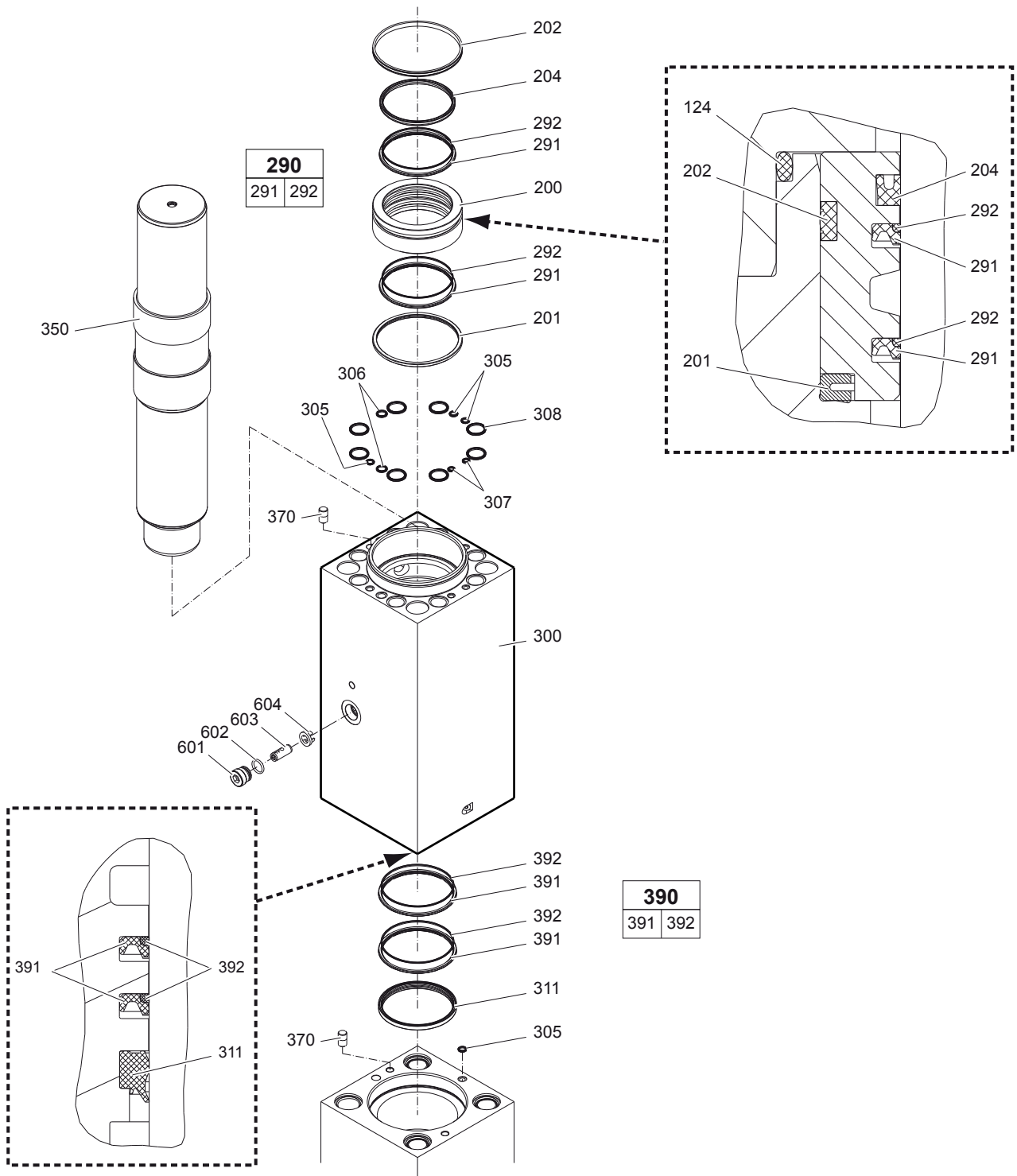
No.	Description	Remark	Quantity	Part number
1	Percussion unit	see separate chapter <b>Note:</b> When ordering a percussion unit for DustProtector version it is imperative to order additionally the base for wiper (no. 18) and the wiper (no. 19).	1	3363 1092 01
2	Elastic pad		1	3363 1040 71
3	Shock absorber		2	3363 1040 73
4	Guide plate		2	3363 1059 35
11	Floating ring	tribolid steel see chapter <i>Optional parts</i>	1	3363 1007 95
12	Counter ring		1	3363 1007 97
13	Guide ring		1	3363 1007 99
14	Bolt		2	3363 0697 69
15	Locking bush		2	3361 8543 63
18	Base for wiper		1	3363 1092 43
19	Wiper		1	3363 1092 45
<b>20(21-24)</b>	<b>Transport safety device complete</b>		1	3363 0833 43
21	Transport safety device		1	-
22	Allen screw		2	3360 0268 83
23	Label transport safety device		1	3363 0918 72
24	Nut		2	3360 1032 54
31	Plate		1	3363 1065 95
32	Pair of lock washers		3	3361 3337 03
33	Allen screw		3	3362 3281 13
34	Plug		10	3363 0860 15
35	Plug		1	3362 2678 93
36	Cover		2	3363 0311 81
37	Plate		2	3363 0948 19
38	Pair of lock washers		8	3361 8505 96
39	Allen screw		8	3362 3284 80
40	Cover		1	3363 0926 97
98	Breaker box		1	3363 1032 04
500	ContiLube® II	see separate <i>Safety and operating instructions</i>	1	3363 0671 23
550	Connecting kit for ContiLube® II	see separate chapter	1	3363 1040 85

# Percussion unit part 1: cylinder cover



No.	Description	Remark	Quantity	Part number
100	Cylinder cover	with no. 161 - 164	1	3363 1069 02
101	Main control valve		1	3363 0977 15
102	Cover		1	3363 0977 17
103	O-ring		1	3360 3143 75
104	Allen screw		6	3360 0267 82
105	Frequency switching valve	AutoControl	1	3363 0354 53
106	Threaded plug		1	3363 0354 25
107	O-ring		2	3360 3143 70
108	HP-accumulator		1	3363 0695 85
109	Allen screw		6	3363 0704 90
110	Pair of lock washers		6	3361 3337 03
111	Back-up ring		1	3361 8505 29
112	O-ring		1	3361 0319 12
113	O-ring		1	3361 0319 90
115	O-ring		2	3360 3143 73
117	Allen screw		12	3360 1037 50
118	Connecting screw		1	3361 8546 57
119	O-ring		1	3360 4781 71
121	Non-return valve		1	3361 8545 11
124	O-ring		1	3361 0319 50
126	Safety valve	PowerAdapt Only in exchange for the part to be replaced. Consult the Atlas Copco Customer Center/Dealer in your area.	1	3363 0852 70
127	Threaded plug		1	3363 0870 86
128	Plug		1	3363 0870 87
129	Back-up ring		1	3363 0870 85
<b>140(141,144,145,148-149)</b>	<b>Swivel joint complete</b>		2	3362 2699 99
<b>141(142-143)</b>	<b>Adapter complete</b>		1	3363 1034 71
142	Adapter		1	-
143	Snapping		1	3363 1031 33
144	Adapter		1	3361 3566 43
<b>145(146-147)</b>	<b>Seal kit</b>		1	3361 8504 22
146	O-ring		2	-
147	Back-up ring		2	-
148	Disk		1	3361 3566 45
149	Cap		1	3361 3534 89
161	Threaded plug		1	3361 8441 15
162	Strainer disk		1	3361 8441 13
163	Threaded insert		6	3361 0319 89
164	Threaded insert		6	3361 0315 29
<b>180(181-183)</b>	<b>Filling valve complete</b>		1	3363 0872 86
181	Filling valve		1	-
182	Threaded plug		1	3360 4784 26
183	O-ring		1	3360 1751 25
<b>191(192-193)</b>	<b>Tensioning bolt complete</b>		4	3363 1069 05
192	Tensioning bolt		1	3363 1092 15
193	Washer		1	3363 0936 49

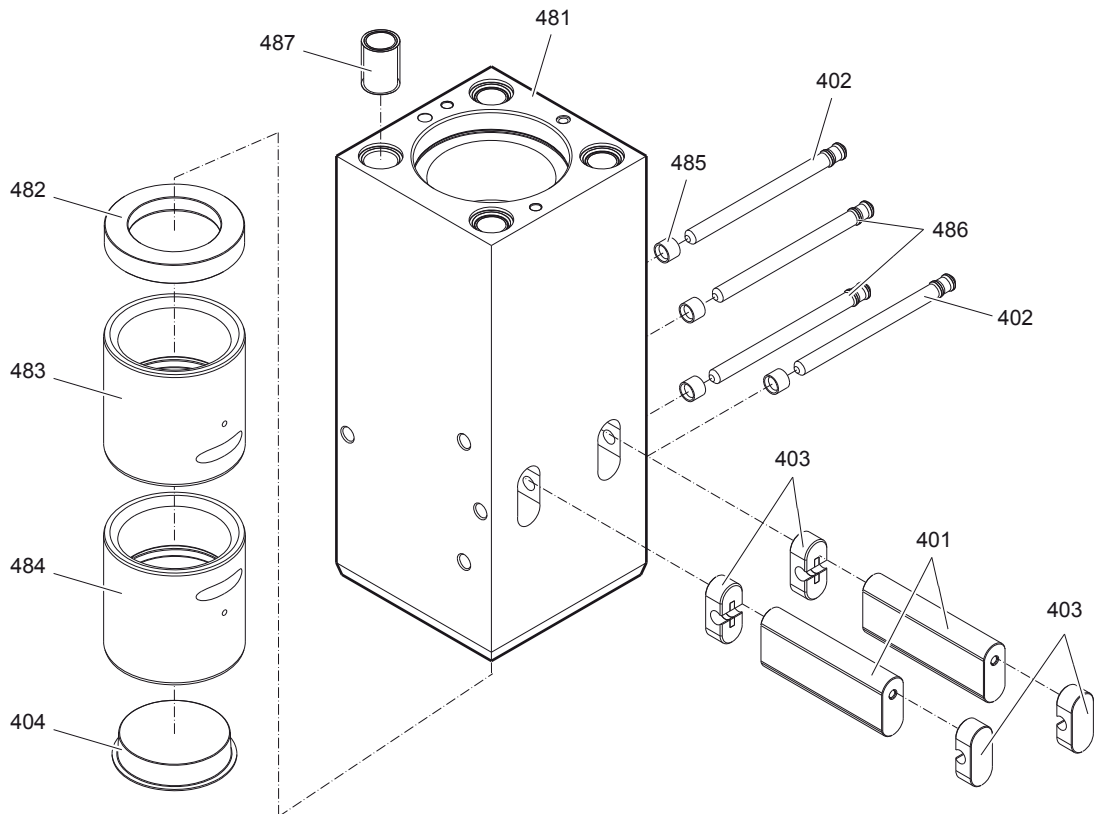
# Percussion unit part 2: cylinder



No.	Description	Remark	Quantity	Part number
200	Seal bush		1	3363 1092 21
201	Ring		1	3363 1092 27
202	Seal		1	3363 1069 40
204	Seal		1	3363 1069 41
<b>290(291-292)</b>	<b>Seal kit</b>		2	3363 1069 07
291	Seal		1	-
292	Back-up ring		1	-
300	Cylinder	with no. 601-604	1	3363 1069 03
305	Seal		4	3362 2675 83
306	Seal		2	3362 2675 85
307	Seal		2	3362 2675 82
308	Seal		8	3362 2672 81
311	Wiper		1	3363 1069 39
350	Percussion piston		1	3363 1069 01
370	Lock pin		2	3362 2681 85
<b>390(391-392)</b>	<b>Seal kit</b>		2	3363 1069 08
391	Seal		1	-
392	Back-up ring		1	-
601	Plug		1	3363 0825 93
602	O-ring		1	3363 0832 45
603	Valve	StartSelect	1	3363 0977 55
604	Sleeve		1	3363 0977 31

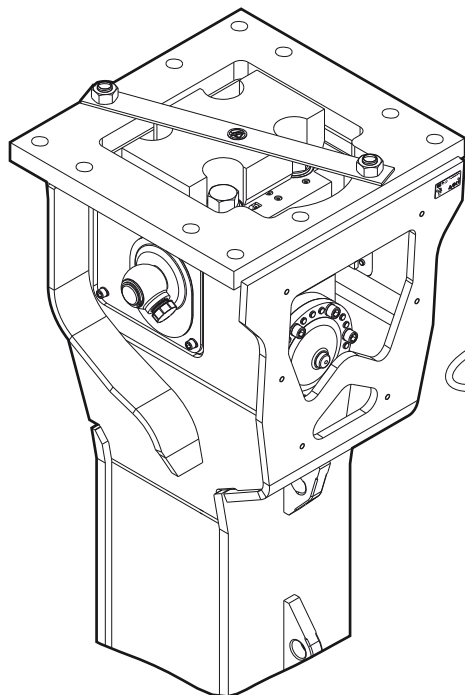
# Percussion unit part 3: lower breaker part

480						
481	482	483	484	485	486	487

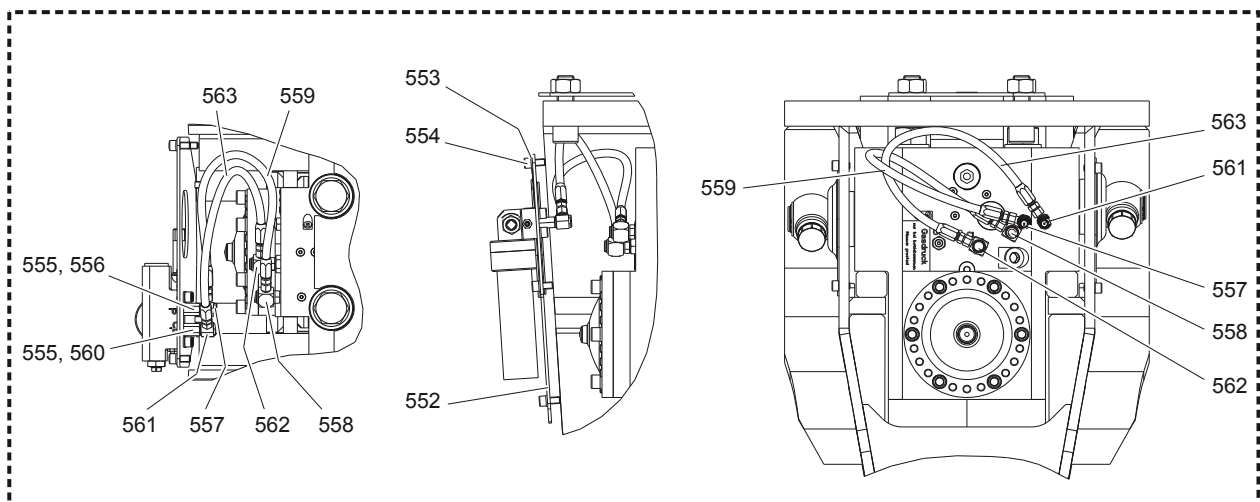
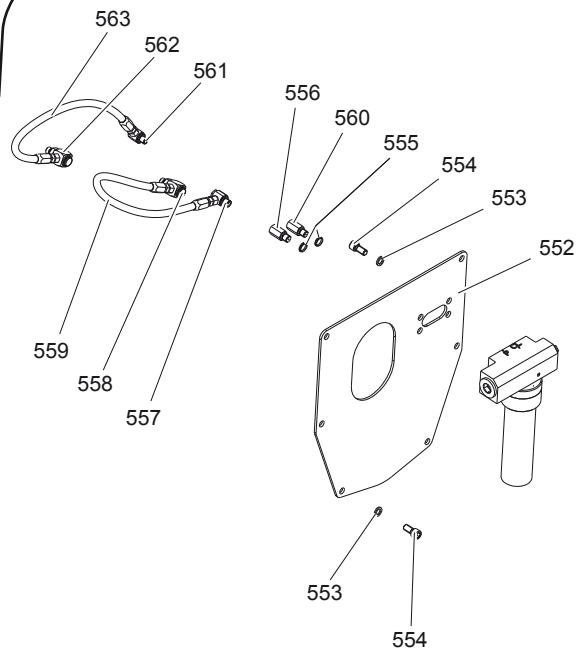


No.	Description	Remark	Quantity	Part number
401	Retainer bar		2	3360 9819 27
402	Bolt		2	3361 8543 47
403	Plug		4	3362 2629 25
404	Protective cap		1	3363 1069 42
<b>480(481-487)</b>	<b>Lower breaker part complete</b>	<b>Note:</b> When ordering a lower breaker part for DustProtector version it is imperative to order additionally the base for wiper (no. 18) and the wiper (no. 19).	1	3363 1069 04
481	Lower breaker part		1	-
482	Buffer ring		1	3363 1092 37
483	Wear bush		1	3363 1092 39
484	Wear bush	steel cast iron see chapter <i>Optional parts</i>	1	3363 1092 41
485	Locking bush		4	3361 8543 63
486	Bolt		2	3361 8543 47
487	Threaded insert		4	3363 0853 79

# Connecting kit for ContiLube® II



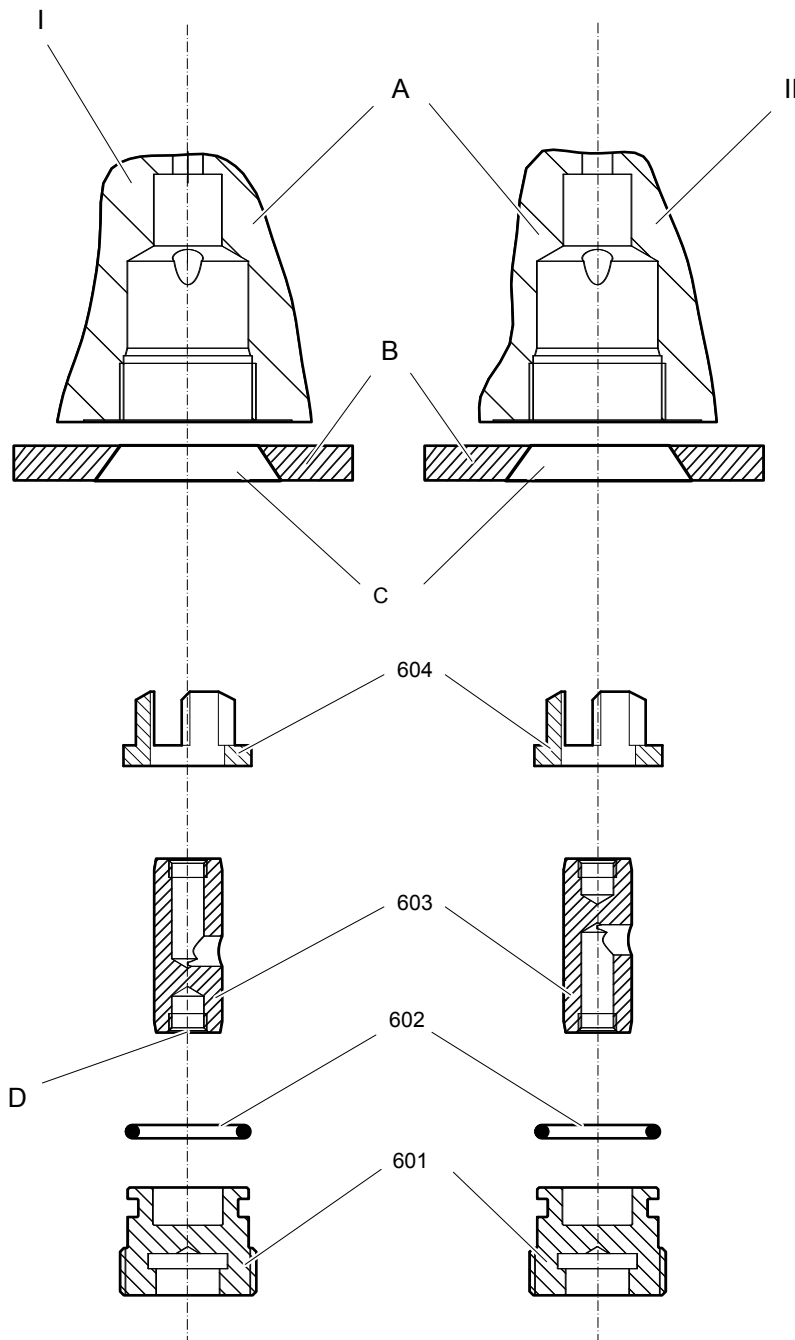
550												
552	553	554	555	556	557	558	559	560	561	562	563	





No.	Description	Remark	Quantity	Part number
<b>550(552-563)</b>	<b>Connecting kit</b>		1	3363 1040 85
552	Plate		1	3363 1030 56
553	Pair of lock washers		10	3361 8505 96
554	Allen screw	secure all 4 allen screws with Loctite 243 screwed in the ContiLube® II	10	3360 1037 50
555	Seal		2	3363 0669 51
556	Adapter	secure with Loctite 243	1	3363 0687 45
557	Fitting	secure with Loctite 243	1	3363 0662 34
558	Fitting	secure with Loctite 243	1	3363 0871 85
559	Hydraulic hose	Oil line secure with Loctite 243 Route the hydraulic hoses as shown on the drawing. It must be ensured that the hydraulic hoses can move freely and are not in contact at any point.	1	3363 0838 78
560	Adapter	secure with Loctite 243	1	3363 0668 87
561	Fitting	secure with Loctite 243	1	3363 0662 33
562	Fitting	secure with Loctite 243	1	3363 0871 86
563	Hydraulic hose	Grease line secure with Loctite 243 Route the hydraulic hoses as shown on the drawing. It must be ensured that the hydraulic hoses can move freely and are not in contact at any point.	1	3363 0838 74

# StartSelect - AutoStart or AutoStop



No.	Description	Remark	Quantity	Part number
601	Plug		1	3363 0825 93
602	O-ring		1	3363 0832 45
603	Valve piston		1	3363 0977 55
604	Sleeve		1	3363 0977 31

I = AutoStop setting

II = AutoStart setting (standard setting on delivery)

A. Port bore in cylinder

B. Wall of breaker box

C. Plug of breaker box

D. M 10 thread (both ends) for mounting

The position of the StartSelect unit is shown on the percussion unit illustrations.

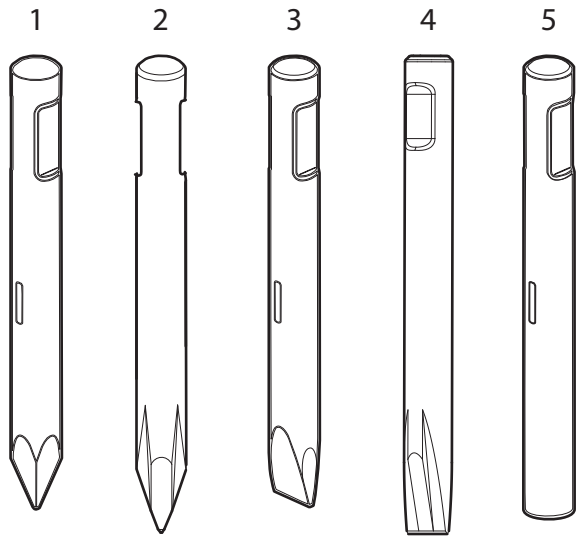
## Optional parts

No.	Description	Remark	Quantity	Part number
11	Floating ring	steel	1	3363 1007 75
484	Wear bush	cast iron	1	3363 1092 57

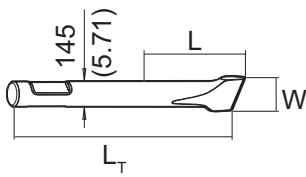
## Tightening torques

No.	Description	Tightening torque	Remark
104	Allen screw	380 Nm	Allen key size 17
106	Threaded plug	300 Nm	Allen key size 22
109	Allen screw	350 Nm	Allen key size 14
117	Allen screw	80 Nm	Allen key size 10
123	Non-return valve	200 Nm	Socket spanner size 41
181	Filling valve	130 Nm	Socket spanner size 22
182	Threaded plug	20 Nm	Allen key size 5
192	Tensioning bolt		Torque wrench or Power wrench size 55 1. Pretighten the tensioning bolts to 500 Nm, proceeding in a crosswise fashion, 2. then tighten each tensioning bolt through 120° (2 sides of hexagonal head) in a crosswise fashion, 3. finally tighten each tensioning bolt again through 150° (2 1/2 sides of hexagonal head) in a crosswise fashion.
601	Plug	200 Nm	Allen key size 17

# Working tools



# HB 2000



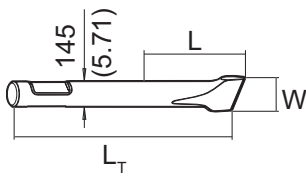
## Metric

No.	Description	Remark	W (mm)	L (mm)	L <sub>T</sub> (mm)	Wt (kg)	Part number
1	Moil point (pyramidal)	ClassicLine		515	1080	121.0	3363 1069 51
1	Moil point (pyramidal)	ClassicLine		665	1230	140.0	3363 1069 48
1	Moil point (pyramidal)	SilverLine		665	1230	140.0	3363 1069 58
2	Moil point (X-Profile)	ClassicLine		665	1230	139.0	3363 1064 71
3	Chisel (cross)	ClassicLine	145	515	1080	126.0	3363 1069 52
3	Chisel (cross)	ClassicLine	145	665	1230	146.0	3363 1069 49
3	Chisel (cross)	SilverLine	145	665	1230	146.0	3363 1069 59
4	Chisel (X-Profile)	ClassicLine	145	665	1230	144.0	3363 1064 72
5	Blunt tool	ClassicLine		515	1080	136.0	3363 1069 54
5	Blunt tool	ClassicLine		665	1230	155.0	3363 1092 51
5	Blunt tool	SilverLine		665	1230	155.0	3363 1092 49

## Imperial

No.	Description	Remark	W (in.)	L (in.)	L <sub>T</sub> (in.)	Wt (lb)	Part number
1	Moil point (pyramidal)	ClassicLine		20.28	42.52	266.8	3363 1069 51
1	Moil point (pyramidal)	ClassicLine		26.18	48.43	308.7	3363 1069 48
1	Moil point (pyramidal)	SilverLine		26.18	48.43	308.7	3363 1069 58
2	Moil point (X-Profile)	ClassicLine		26.18	48.43	306.4	3363 1064 71
3	Chisel (cross)	ClassicLine	5.71	20.28	42.52	277.8	3363 1069 52
3	Chisel (cross)	ClassicLine	5.71	26.18	48.43	321.9	3363 1069 49
3	Chisel (cross)	SilverLine	5.71	26.18	48.43	321.9	3363 1069 59
4	Chisel (X-Profile)	ClassicLine	5.71	26.18	48.43	317.5	3363 1064 72
5	Blunt tool	ClassicLine		20.28	42.52	299.8	3363 1069 54
5	Blunt tool	ClassicLine		26.18	48.43	341.7	3363 1092 51
5	Blunt tool	SilverLine		26.18	48.43	341.7	3363 1092 49

## HB 2000 DustProtector



### Metric

No.	Description	Remark	W (mm)	L (mm)	L <sub>T</sub> (mm)	Wt (kg)	Part number
1	Moil point (pyramidal)	ClassicLine		450	1080	121.0	3363 1069 51
1	Moil point (pyramidal)	ClassicLine		600	1230	140.0	3363 1069 48
1	Moil point (pyramidal)	SilverLine		600	1230	140.0	3363 1069 58
2	Moil point (X-Profile)	ClassicLine		600	1230	139.0	3363 1064 71
3	Chisel (cross)	ClassicLine	145	450	1080	126.0	3363 1069 52
3	Chisel (cross)	ClassicLine	145	600	1230	146.0	3363 1069 49
3	Chisel (cross)	SilverLine	145	600	1230	146.0	3363 1069 59
4	Chisel (X-Profile)	ClassicLine	145	600	1230	144.0	3363 1064 72
5	Blunt tool	ClassicLine		450	1080	136.0	3363 1069 54
5	Blunt tool	ClassicLine		600	1230	155.0	3363 1092 51
5	Blunt tool	SilverLine		600	1230	155.0	3363 1092 49

### Imperial

No.	Description	Remark	W (in.)	L (in.)	L <sub>T</sub> (in.)	Wt (lb)	Part number
1	Moil point (pyramidal)	ClassicLine		17.72	42.52	266.8	3363 1069 51
1	Moil point (pyramidal)	ClassicLine		23.62	48.43	308.7	3363 1069 48
1	Moil point (pyramidal)	SilverLine		23.62	48.43	308.7	3363 1069 58
2	Moil point (X-Profile)	ClassicLine		23.62	48.43	306.4	3363 1064 71
3	Chisel (cross)	ClassicLine	5.71	17.72	42.52	277.8	3363 1069 52
3	Chisel (cross)	ClassicLine	5.71	23.62	48.43	321.9	3363 1069 49
3	Chisel (cross)	SilverLine	5.71	23.62	48.43	321.9	3363 1069 59
4	Chisel (X-Profile)	ClassicLine	5.71	23.62	48.43	317.5	3363 1064 72
5	Blunt tool	ClassicLine		17.72	42.52	299.8	3363 1069 54
5	Blunt tool	ClassicLine		23.62	48.43	341.7	3363 1092 51
5	Blunt tool	SilverLine		23.62	48.43	341.7	3363 1092 49



## Accessories

### Hydraulic hoses

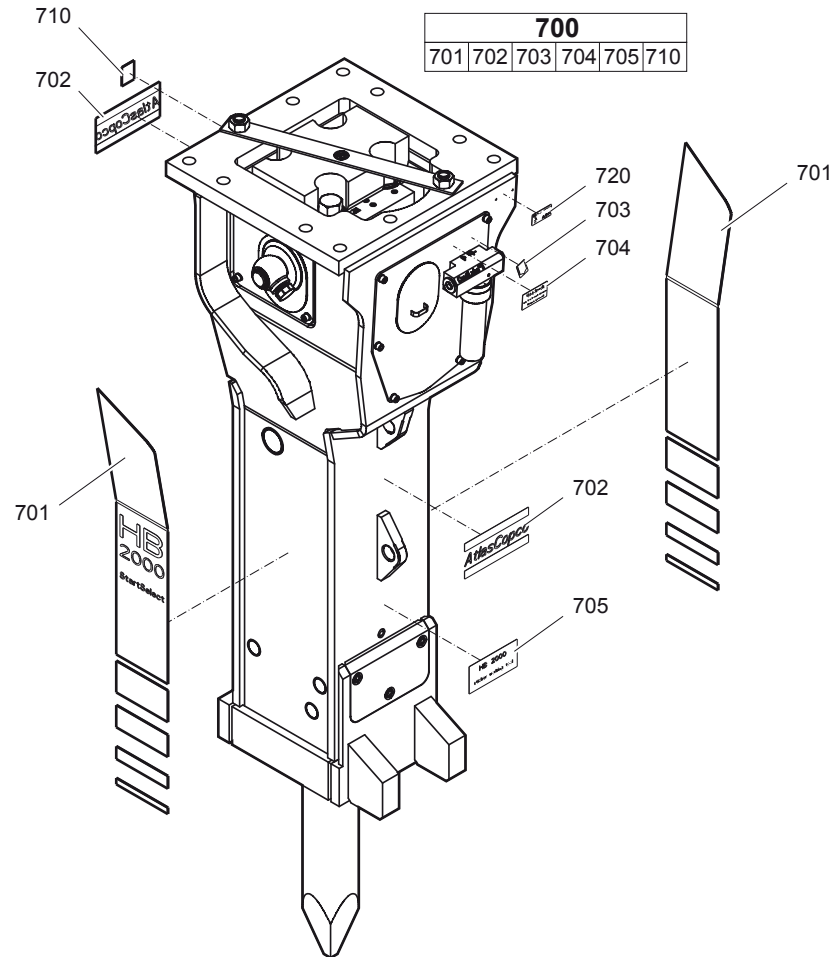
Description	Remark	Quantity	Part number
Hose	I.D. 25 (1"), both ends JIC 1 5/8", length 2300 mm (91 in.)	2	3363 0311 90
Hose	I.D. 25 (1"), both ends JIC 1 5/8", length 2800 mm (110 in.)	2	3363 0311 91

### Optional equipment

Description	Remark	Quantity	Part number
Chisel paste for ContiLube® II	500 g (1.1 lbs) (carton of 12 pieces)	1	3363 0912 00
Grease gun for cartridge ContiLube® II		1	3363 0345 67
Grease nipple		1	3360 4337 74
Service box no. I with nitrogen cylinder	2 l	1	3363 0898 44
Service box no. III without nitrogen cylinder		1	3363 0949 40
Test gauge lower wear bush		1	3363 1048 99
Test gauge upper wear bush		1	3363 0949 52
Adapter plate matching the carrier	Consult the Atlas Copco Customer Center/Dealer in your area.	1	-
Base plate with threaded inserts		1	3363 0997 95
Bolt kit		1	3363 0873 03
Base plate through borings		1	3363 1006 99
Bolt kit		1	3363 0945 75
Allen key	22 mm for bolt kit	1	3360 2094 45
Adapter kit for underwater applications		1	3363 0905 31
Piston retainer		1	3363 1057 33

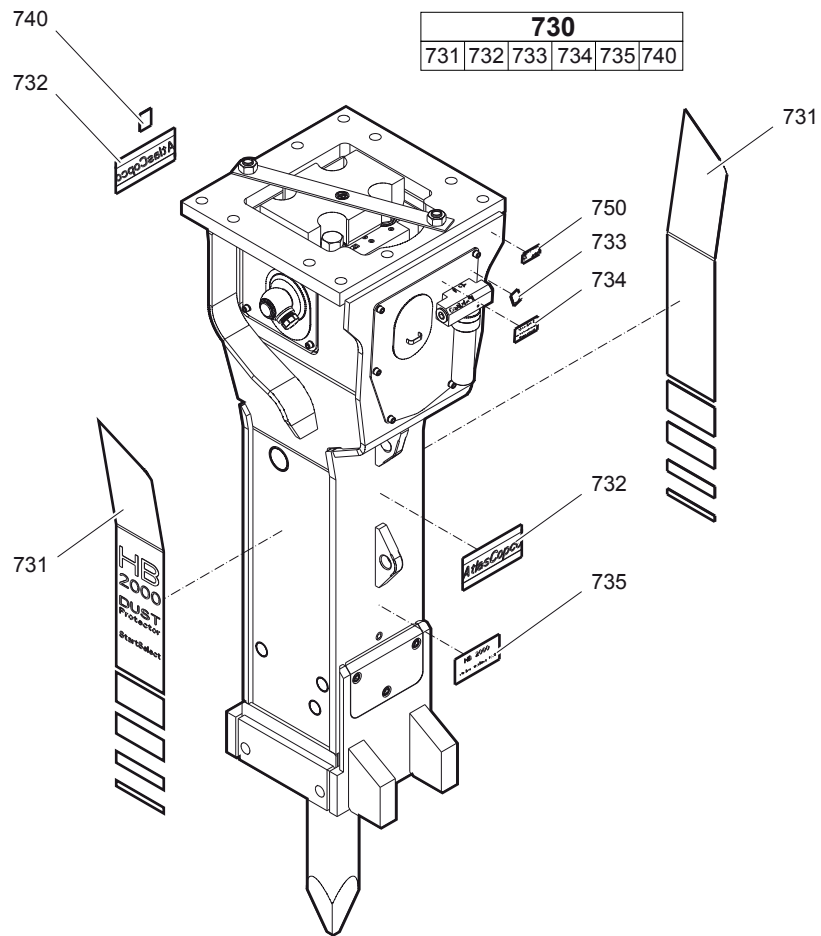
## Kits

## Label kit HB 2000



No.	Description	Remark	Quantity	Part number
<b>700(701-710)</b>	<b>Label kit HB 2000</b>		1	3363 1069 09
701	Label HB 2000		2	-
702	Label Atlas Copco		2	-
703	Lubricating symbol		1	-
704	Label gas pressure		1	-
705	Label working tools		1	-
710	Label noise level		1	-
720	Name plate		1	-

# Label kit HB 2000 DustProtector



No.	Description	Remark	Quantity	Part number
<b>730(731-740)</b>	<b>Label kit HB 2000 DustProtector</b>		1	3363 1069 10
731	Label HB 2000 DustProtector		2	-
732	Label Atlas Copco		2	-
733	Lubricating symbol		1	-
734	Label gas pressure		1	-
735	Label working tools		1	-
740	Label noise level		1	-
750	Name plate		1	-

## Seal kit

No.	Description	Remark	Quantity	Part number
	<b>Seal kit</b>		1	3363 1069 06
103	O-ring		1	3360 3143 75
107	O-ring		2	3360 3143 70
111	Back-up ring		1	3361 8505 29
112	O-ring		1	3361 0319 12
113	O-ring		1	3361 0319 90
115	O-ring		2	3360 3143 73
119	O-ring		1	3360 4781 71
124	O-ring		1	3361 0319 50
129	Back-up ring		1	3363 0870 85
<b>143(144-145)</b>	<b>Seal kit</b>		2	3361 8504 22
144	O-ring		2	3361 8462 82
145	Back-up ring		2	3361 8462 81
182	Threaded plug		1	3360 4784 26
183	O-ring		1	3360 1751 25
201	Ring		1	3363 1092 27
202	Seal		1	3363 1069 40
204	Seal		1	3363 1069 41
<b>290(291-292)</b>	<b>Seal kit</b>		2	3363 1069 07
291	Seal		1	3363 1092 29
292	Back-up ring		1	3363 1092 31
305	Seal		4	3362 2675 83
306	Seal		2	3362 2675 85
307	Seal		2	3362 2675 82
308	Seal		8	3362 2672 81
311	Wiper		1	3363 1069 39
<b>390(391-392)</b>	<b>Seal kit</b>		2	3363 1069 08
391	Seal		1	3363 1092 33
392	Back-up ring		1	3363 1092 35
602	O-ring		1	3363 0832 45

## Plastic parts kit

No.	Description	Remark	Quantity	Part number
	<b>Plastic parts kit</b>		1	3363 1065 98
2	Elastic pad		1	3363 1040 71
3	Shock absorber		2	3363 1040 73
4	Guide plate		2	3363 1059 35

## Tensioning bolt kit

No.	Description	Remark	Quantity	Part number
	<b>Tensioning bolt kit</b>		1	3363 1069 30
192	Tensioning bolt		2	3363 1092 15
193	Washer		2	3363 0936 49
487	Threaded insert		2	3363 0853 79
	Anti-Seize 120 g		1	3363 0943 00

## DustProtector kit

No.	Description	Remark	Quantity	Part number
	<b>DustProtector kit</b>		1	3363 1069 31
11	Floating ring		1	3363 1007 95
12	Counter ring		1	3363 1007 97
13	Guide ring		1	3363 1007 99
14	Locking bush		2	3363 0697 69
15	Bolt		2	3361 8543 63

## Noise protection kit

No.	Description	Remark	Quantity	Part number
	<b>Noise protection kit</b>		1	3363 1069 37
31	Plate		1	3363 1065 95
32	Pair of lock washers		3	3361 3337 03
33	Allen screw		3	3362 3281 13
34	Plug		10	3363 0860 15
35	Plug		1	3362 2678 93
36	Cover		2	3363 0311 81
37	Plate		2	3363 0948 19
38	Pair of lock washers		8	3361 8505 96
39	Allen screw		8	3362 3284 80
40	Cover		1	3363 0926 97

## Lower breaker part kit (steel)

No.	Description	Remark	Quantity	Part number
	<b>Lower breaker part kit</b>	HB 2000 with lower wear bush steel	1	3363 1069 34
401	Retainer bar		2	3360 9819 27
402	Bolt		2	3361 8543 47
403	Plug		4	3362 2629 25
482	Buffer ring		1	3363 1092 37
483	Wear bush		1	3363 1092 39
484	Wear bush	steel	1	3363 1092 41
485	Locking bush		4	3361 8543 63
486	Bolt		1	3361 8543 47
	Chisel paste		1	3315 0381 00
	Test gauge		1	3363 1048 99

## Lower breaker part kit (cast iron)

No.	Description	Remark	Quantity	Part number
	<b>Lower breaker part kit</b>	HB 2000 with lower wear bush cast iron	1	3363 1069 32
401	Retainer bar		2	3360 9819 27
402	Bolt		2	3361 8543 47
403	Plug		4	3362 2629 25
482	Buffer ring		1	3363 1092 37
483	Wear bush		1	3363 1092 39
484	Wear bush	cast iron	1	3363 1092 57
485	Locking bush		4	3361 8543 63
486	Bolt		2	3361 8543 47
	Chisel paste		1	3315 0381 00
	Test gauge		1	3363 1048 99

## Lower breaker part kit DustProtector (steel)

No.	Description	Remark	Quantity	Part number
	<b>Lower breaker part kit</b>	HB 2000 DustProtector with lower wear bush steel	1	3363 1069 35
18	Base for wiper		1	3363 1092 43
19	Wiper		1	3363 1092 45
401	Retainer bar		2	3360 9819 27
402	Bolt		2	3361 8543 47
403	Plug		4	3362 2629 25
482	Buffer ring		1	3363 1092 37
483	Wear bush		1	3363 1092 39
484	Wear bush	steel	1	3363 1092 41
485	Locking bush		4	3361 8543 63
486	Bolt		2	3361 8543 47
	Chisel paste		1	3315 0381 00
	Test gauge		1	3363 1048 99

## Lower breaker part kit DustProtector (cast iron)

No.	Description	Remark	Quantity	Part number
	<b>Lower breaker part kit</b>	HB 2000 DustProtector with lower wear bush cast iron	1	3363 1069 33
18	Base for wiper		1	3363 1092 43
19	Wiper		1	3363 1092 45
401	Retainer bar		2	3360 9819 27
402	Bolt		2	3361 8543 47
403	Plug		4	3362 2629 25
482	Buffer ring		1	3363 1092 37
483	Wear bush		1	3363 1092 39
484	Wear bush	cast iron	1	3363 1092 57
485	Locking bush		4	3361 8543 63
486	Bolt		2	3361 8543 47
	Chisel paste		1	3315 0381 00
	Test gauge		1	3363 1048 99

## Expansion bolt kit

No.	Description	Remark	Quantity	Part number
	<b>Expansion bolt kit</b>		1	3363 0980 88
109	Allen screw		6	3363 0704 90
110	Washer		6	3361 3337 03
163	Threaded insert		6	3361 0319 89

## Accumulator repair kit

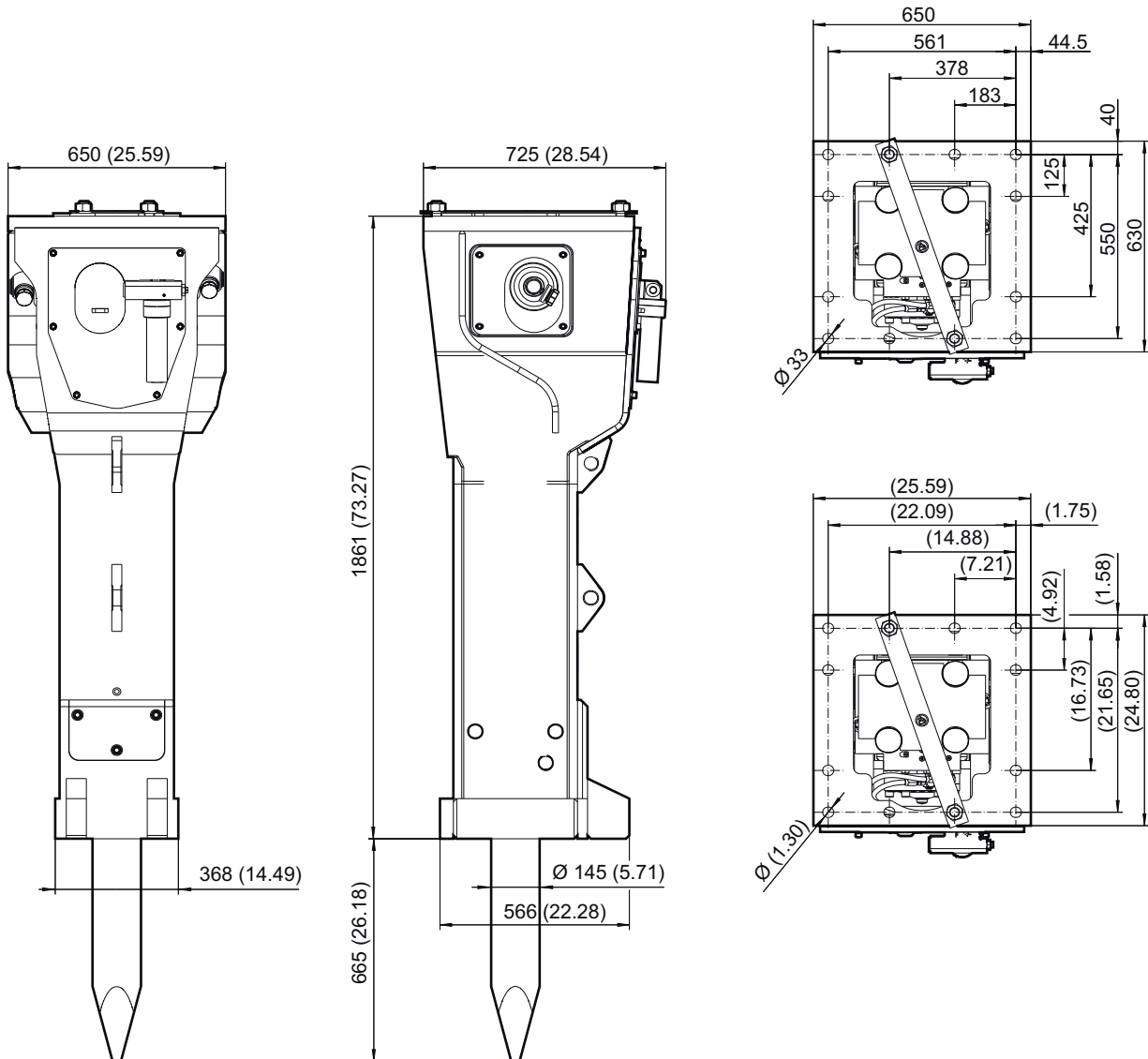
Accumulators are pressure containers in the context of the European Pressure Equipment Directive 97/23/EC. You have to observe all safety instructions comply with the laws and all national/regional regulations of your country if you repair accumulators.

No.	Description	Remark	Quantity	Part number
	<b>Accumulator repair kit</b>		1	3363 0898 49
	Diaphragm		1	3362 2616 47
	Filling screw		1	3360 3322 59
	O-ring		1	3360 3144 60
	Protective cap		1	3361 3350 25
	O-ring		1	3361 0319 12
	Back-up ring		1	3361 8505 29

# Dimensions

## Dimensions HB 2000

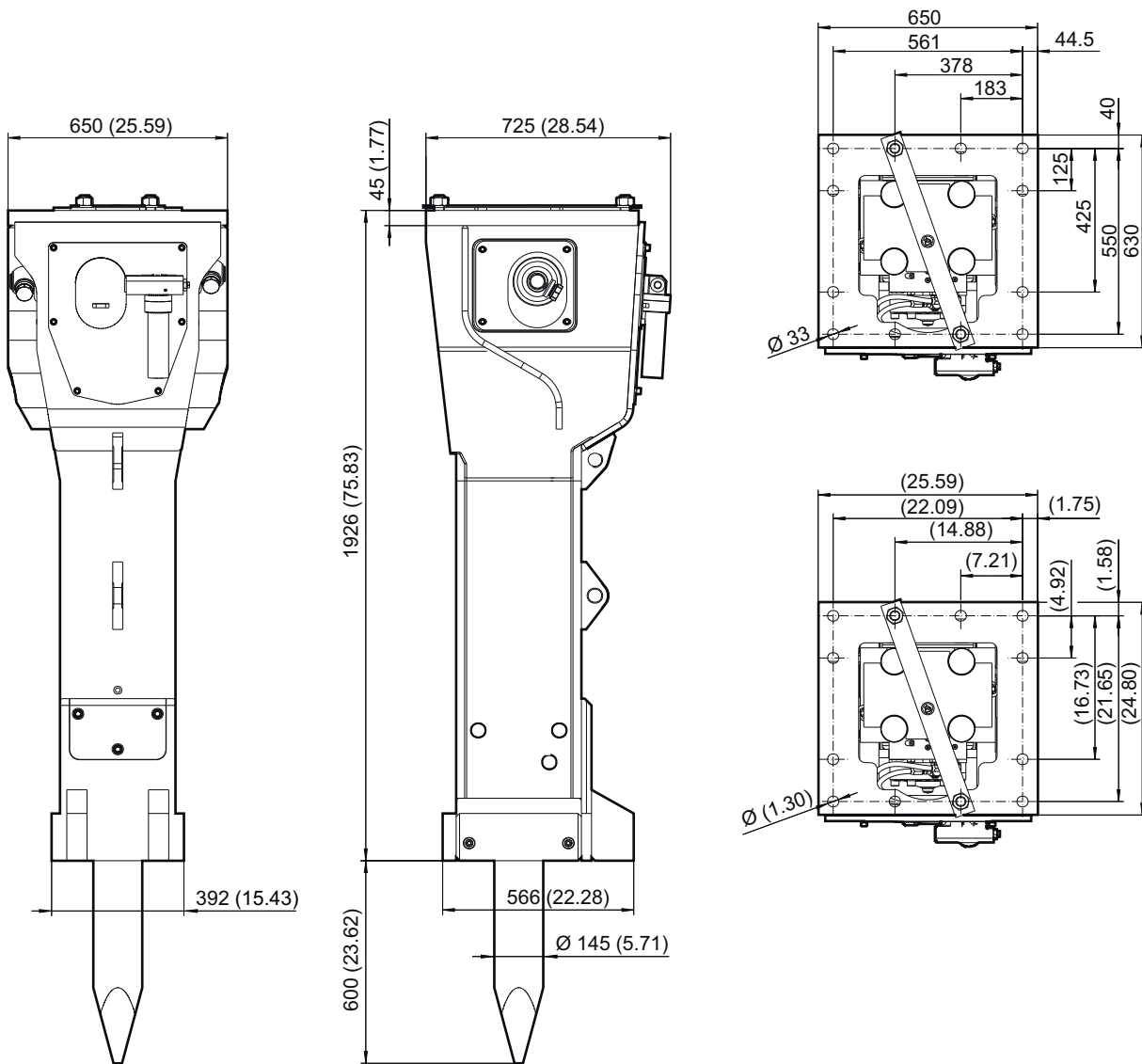
Metric mm and (imperial inch)





# Dimensions HB 2000 DustProtector

Metric mm and (imperial inch)









Any unauthorized use or copying of the contents or any part thereof is prohibited.  
This applies in particular to trademarks, model denominations, part numbers, and drawings.

© 2010 Atlas Copco Construction Tools GmbH | No. 3390 7440 01 | 2010-04-19