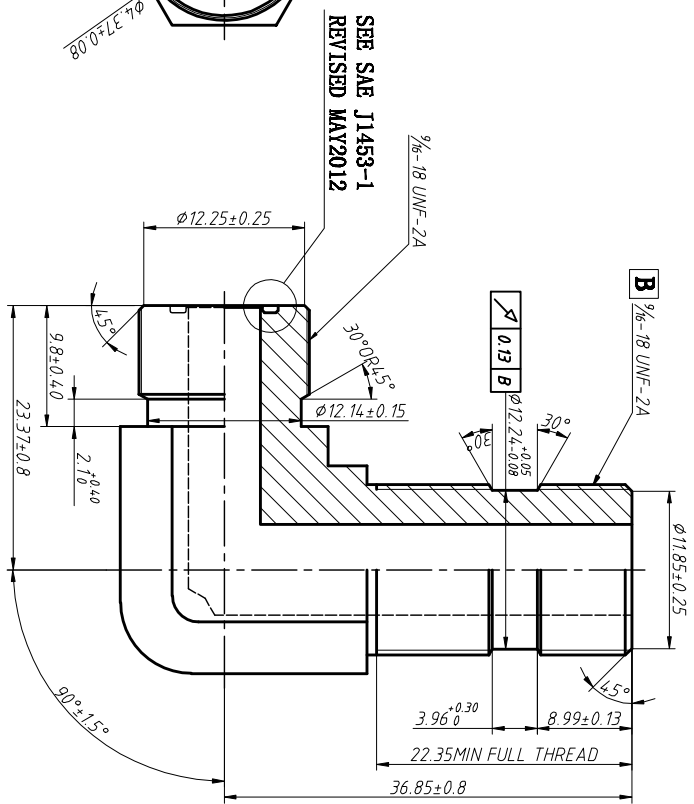
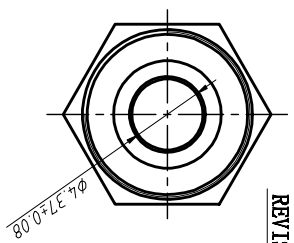
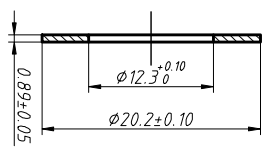
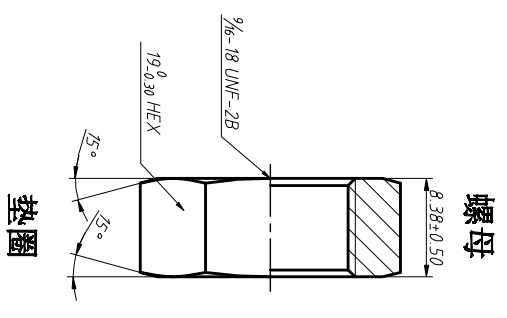


REV	DATE	REVISION DETAILS	APPD
更改号 A	日期 JAN. 03. 2020	更改内容 drawing update	审核并批准



SEE SAE J1453-1  
REVISED MAY2012

**UNLESS SPECIFIED  
ALL DIMENSIONS IN mm,  
MACHINED SURFACES Ra=3.2um,  
ANGLE TOLERANCES ±5°,  
Other tolerance except angles,  
in accordance with  
GB/T1804-2000(ISO2768-1)-m  
and GB/T1184-1996(ISO2768-2)-m**

**其它事项,  
图示尺寸单位为mm,  
未注加工表面粗糙度 Ra=3.2um,  
未注角度公差 ±5°,  
其它未注公差 (除角度外) 均按:  
GB/T1804-2000(ISO2768-1)-m 和  
GB/T1184-1996(ISO2768-2)-m**

**MATERIAL**  
Chinese steel 45

**材质** 45#

**FINISH**  
Remove all sharp edges,burrs,slivers and swarf, break all edges 0.127-0.254mm.  
ZINC PLATING WITH 8um MICRONS MINIMUM PLATING THICKNESS AND TRIVALENT CHROMATE PASSIVATION  
AND WITHSTAND 96 HRS TO WHITE / 144 HS TO RED RUST IN SALT SPRAY TEST.

去除所有毛刺, 铁屑等残留物, 锐边倒钝0.127-0.254mm.  
镀锌, 三价铬钝化, 银白色, 盐雾试验96小时无白锈, 144小时无红锈, 镀锌层厚度大于0um.

**Zhejiang Gaocheng Autoparts Co., Ltd**

**PART No**  
零件名  
**6801-4FS-6NWO**

<b>SCALE:</b> 批注 NTS	<b>DATE:</b> 日期	<b>CHK:</b> 审核
<b>APPD:</b> 批准	<b>DATE:</b> 日期	<b>CHK:</b> 审核

**DRN:**  
制图  
余德胜  
2020.01.03

**CHK:**  
审核  
詹永斌  
2020.01.03