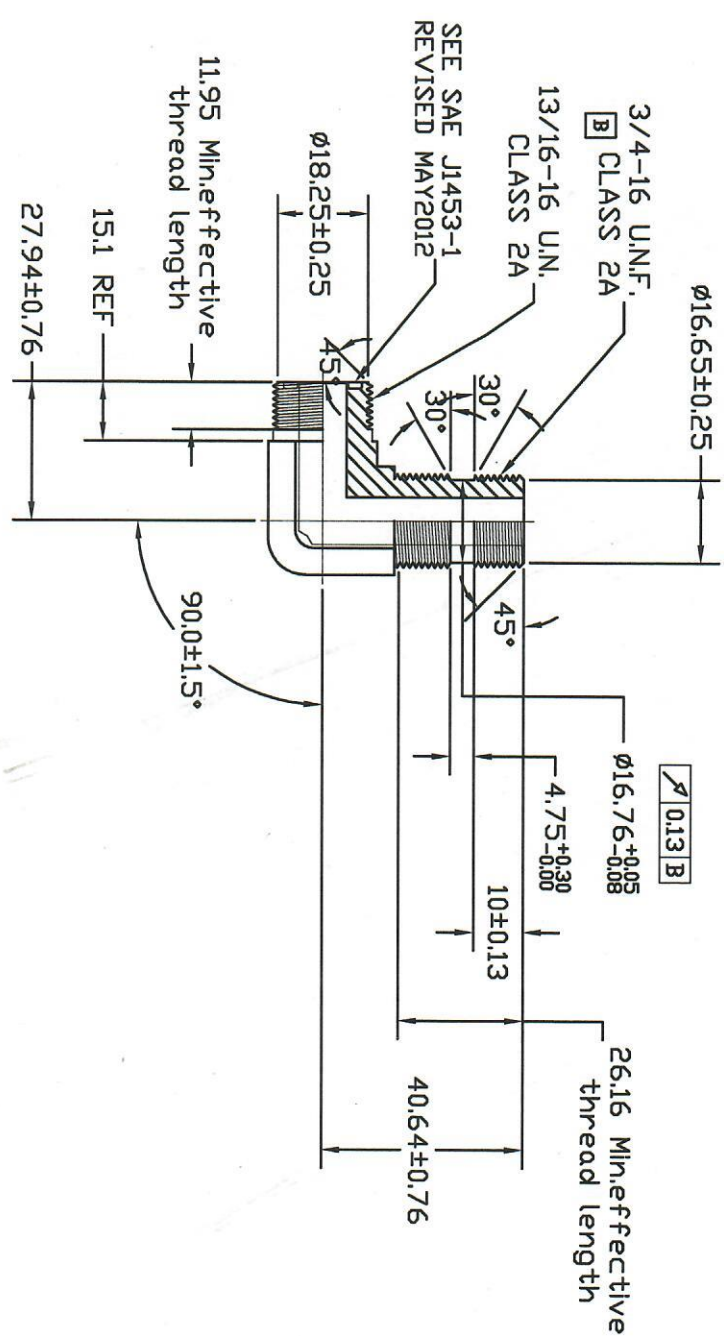
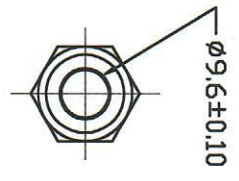
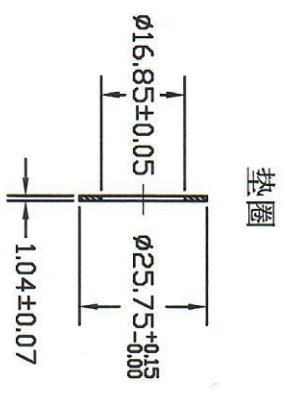
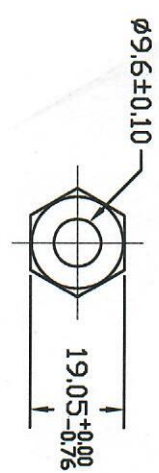
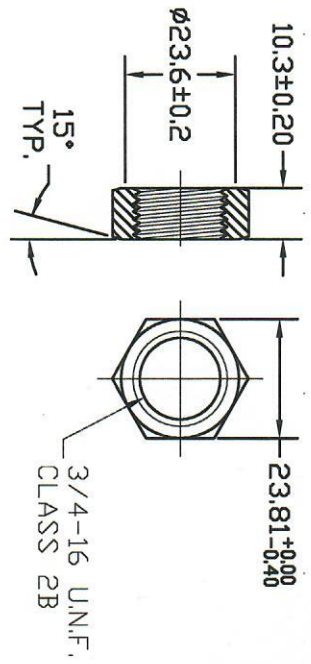


螺母



UNLESS SPECIFIED  
 ALL DIMENSIONS IN mm,  
 MACHINED SURFACES Ra=3.2um,  
 ANGLE TOLERANCES ±5°,  
 Other tolerance except angles,  
 in accordance with  
 GB/T1804-2000(ISO2768-1)-m  
 and GB/T1184-1996(ISO2768-2)-m

其它事项,  
 图示尺寸单位为mm,  
 未注加工表面粗糙度 Ra=3.2um,  
 未注角度公差 ±5°,  
 其它未注公差 (除角度外) 均按:  
 GB/T1804-2000(ISO2768-1)-m 和  
 GB/T1184-1996(ISO2768-2)-m

MATERIAL Chinese steel 45

FINISH Remove all sharp edges,burrs,silvers and swarf, break all edges 0.127-0.254mm. ZINC PLATING WITH 8um MICRONS MINIMUM PLATING THICKNESS AND TRIVALENT CHROMATE PASSIVATION AND WITHSTAND 96 HRS TO WHITE / 144 HS TO RED RUST IN SALT SPRAY TEST.

去除所有毛刺, 钝角等残留物, 锐边倒钝0.127-0.254mm. 镀锌, 三价铬钝化, 银白色, 盐雾试验96小时无白锈, 144小时无红锈, 镀锌层厚度大于8um.

REV	DATE	REVISION DETAILS	APPD
更改号	日期	更改内容	审核并批准
A	Mar 30, 2020	Drawing Update	

<b>Zhejiang Gaocheng Autoparts Co., Ltd</b>	
PART No 零件名	6801-8FS-8NW0
SCALE: NTS	DATE: 日期
DATE: 日期	DATE: 日期

APPD: 批准	DRN: 制图
DATE: 日期	DATE: 日期
CHK: 审核	CHK: 审核
DATE: 日期	DATE: 日期