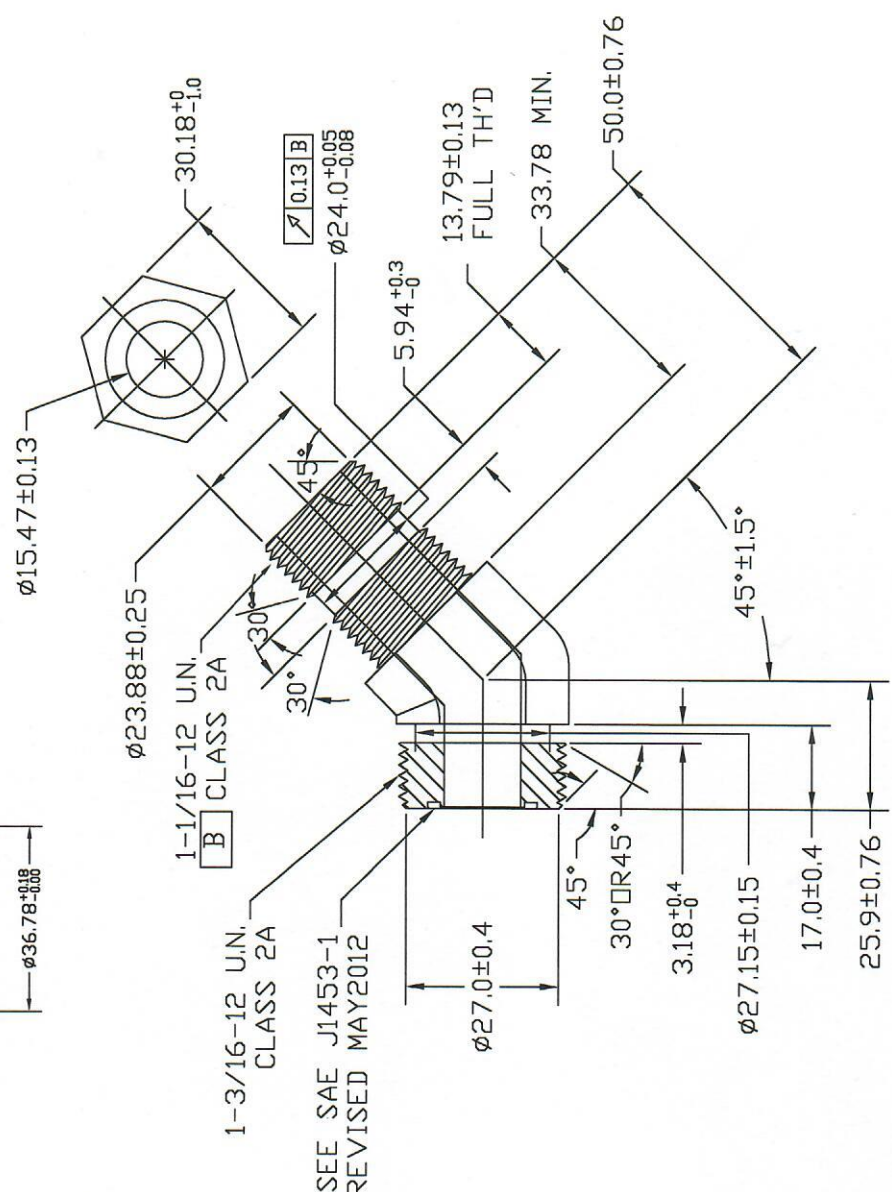
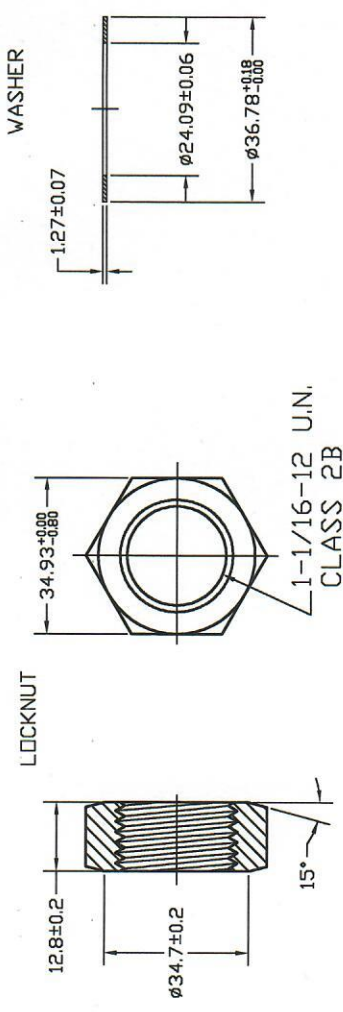


REV 更改号	DATE 日期	REVISION DETAILS 更改内容	APPD 审核并批准
A	Mar.27.2020	Drawing Update	



SEE SAE J1453-1
REVISED MAY 2012

**UNLESS SPECIFIED
ALL DIMENSIONS IN mm,
MACHINED SURFACES Ra=3.2um,
ANGLE TOLERANCES ±5°,
Other tolerance except angles,
in accordance with
GB/T1804-2000(ISO2768-1)-m
and GB/T1184-1996(ISO2768-2)-m**

**其它事项,
图示尺寸单位为mm,
未注机械加工表面粗糙度 Ra=3.2um,
未注角度公差 ±5°,
其它未注公差 (除角度外) 均按:
GB/T1804-2000(ISO2768-1)-m 和
GB/T1184-1996(ISO2768-2)-m**

Zhejiang Gaocheng Autoparts Co., Ltd	
PART No 零件名	6802-12FS-12NW0
SCALE:	
NTS	
APPD: 批准	DRN: Sun Jianghuan 制图 20.03.27
DATE: 日期	CHK: Li Jumbiao 审核 20.03.27
MATERIAL	Chinese steel 45
FINISH	Remove all sharp edges, burrs, silvers and swarf, break all edges 0.127-0.254mm. ZINC PLATING WITH 8um MICRONS MINIMUM PLATING THICKNESS AND TRIVALENT CHROMATE PASSIVATION AND WITHSTAND 96 HRS TO WHITE / 144 HS TO RED RUST IN SALT SPRAY TEST. 镀锌, 三价铬钝化, 银白色, 盐雾试验96小时无白锈, 144小时无红锈, 镀锌层厚度大于8um。 去除所有毛刺, 铁屑等残留物, 锐边倒钝0.127-0.254mm。