



Spare Parts Catalog

6 HP 602 S NMOT

Material number: 4235.065.001



Pos.	Information	Amendment number
001	Use case -----	
002	Customer NHL - Inner Mongolia North Hauler Joint Stock Co.	
003	City Baotou, Inner Mongolis	
004	DUNS	
005	Product description -----	
006	SAUBERKEIT SKALENZAHL 1 20	
007	CLEANNES SCALE NUMBER 2 14	
008	CLEANNES SPECIFICATION ZFN 5015	
009	TRANSMISSION ATTACHMENT SEPARATE	
010	RATIO, BOTTOM GEAR 5.6	
011	RATIO, TOP GEAR .83	
012	RATIO, 1ST GEAR 5.6	
013	RATIO, 2ND GEAR 3.43	
014	RATIO, 3RD GEAR 2.01	
015	RATIO, 4TH GEAR 1.42	
016	RATIO, 5TH GEAR 1	
017	RATIO, 6TH GEAR .83	
018	RATIO, 1ST GEAR REVERSE 4.84	
019	HAUPTDRUCK WK GEOEFFNET 22 bar	
020	HAUPTDRUCK WK GESCHLOSSEN 13 bar	
021	DESIGN, OUTPUT COAXIAL	
022	ZAEHNEZAHL ZAEHLSCHIEBE ABTR 30	
023	UEBERSETZUNG N ABTR/N IMPULS 1	
024	OUTER DIA. OUTPUT FLANGE RA 180 mm	
025	DESIGN, OUTPUT FLANGE HA CURVIC COUPLING	
026	UEBERSETZUNG MECH.TACHOANTR. .65	
027	AUSFUEHRUNG DRUCKMODULATION ELECTRICAL	
028	AUSF RETARDERANSTEUERUNG SOLENOID VALVE GEARBOX	
029	BREMSMOMENT MAX 1500 Nm	
030	ABTR.DREHZAHN BEI MAX BREMSMOM 1900 1/min	



Pos.	Information	Amendment number
031	ATTACHM.POS.HEAT EXCHANGER BACK LONG	
032	1.INST.INSTRUCTION HEAT EXCHANGER WITHOUT ACCUMU.	
033	DESIGN, OIL SUMP DEEP	
034	CODIERUNG OELEINFUELLROHR K01	
035	HOEHE OELEINFUELLROHR 192 mm	
036	DESIGN CONVERTER W390	
037	WANDLERKENNUNG TPC 487 Nm	
038	DREHZAHL WANDLERPUM.BEI M MAX 1000 1/min	
039	CONVERTER CHARACTERISTIC \hat{A}_μ 1.98	
040	SCHALTMOMENT WANDLERKUPPL MAX 1600 Nm	
041	DICKE TELLERFEDER WANDLER 4.7 mm	
042	EINSTELLMASS MOTORANSCHLUSS 81.25 mm	
043	D-LOCHKREIS WANDLERMEMBRANE 402 mm	
044	OPERATING VOLTAGE 24 V	
045	ANZAHL POLE BETRIEBSSPANNUNG 2	
046	OIL CAPACITY, GEARBOX 20 dm ³	
047	OIL GRADE PERMISSIBLE ACC. TO TE-ML14	
048	CODING OUTER CONSERVATION KA2	
049	SCOPE OUTER CONSERVATION T	
050	CODING INNER CONSERVATION KI1	
051	CONSERVATION SPECIFICATION ZFN 916	
052	Documents -----	
053	ANSCHLUSSTEILE Drawing 4139.000.101	
054	ANSCHLUSS Drawing 4139.102.014	
055	Drawing 4139.110.020	
056	WANDLER Drawing 4139.134.111	
057	WAERMETAUSCHER Drawing 4139.147.358	
058	GETRIEBE Drawing 4149.005.001	
059	ABTRIEB Drawing 4149.103.010	
060	SCHALTSTEUERUNG Drawing 4149.106.010	

Assembly group overview

Page 1 from 2

Material number: 4235.065.001

6 HP 602 S NMOT /



Graphics	Pos.	Material number	Name	VKF	Amend. no.	Amend. start	Prod. no.	Material feature / tech. info.	ID
004.01.09-1	110	4139.101.506	GEARBOX HOUSING	1		00.00.0000		SON*NA-OHNE*SCHILD A	3
004.04.18-1	210	4139.110.416	COVER PLATE	1		00.00.0000		NA-OHNE*RETARDER	3
004.04.18-1	214	4149.110.800	OIL SUPPLY	1		00.00.0000		HP502-602*O.NA*NMOT *INDUKTIVGEBER	3
004.04.18-1	900	4149.110.118	OIL SUPPLY	1		00.00.0000		HP602C*O.NA*RET *>=1400N.M*LECKAGEOPTIMIERT*NMOT	3
004.07.06-1	220	4139.120.011	RETARDER	1		00.00.0000		GD	3
004.07.06-1	230	4149.120.404	RETARDER VALVE	1		00.00.0000		DIN-BAJ.	3
004.07.06-1	236	4149.120.800	RETARDER	1		00.00.0000		RET.ABGLEICH	3
004.07.06-1	910	4149.120.003	RETARDER	1		00.00.0000		LECKAGEOPTIMIERT	3
004.10.03-1	900	4236.133.002	GEARBOX	1		00.00.0000		HP602 S PLUS*5,60-0,83*WC/C	3
004.10.03-1	904	4149.133.012	PLANETARY DRIVE	1		00.00.0000		HP600*I+II*ECO 2PLUS	3
004.13.01-1	910	4139.170.004	COUPLING	1		00.00.0000		HP600 A16*B10*C 8	3
004.14.02-1	920	4149.171.005	BRAKE	1		00.00.0000		HP592 *D 8	3
004.15.04-1	930	4149.172.009	BRAKE	1		00.00.0000		HP592 *E14	3
004.16.02-1	940	4149.173.012	BRAKE	1		00.00.0000		HP602LG F16	3
004.17.01-1	950	4139.174.001	BRAKE	1		00.00.0000		HP600 G18	3
004.17.01-1	952	4139.174.800	BRAKE	1		00.00.0000			3
004.20.53-1	300	4235.103.001	OUTPUT	1		00.00.0000		HP602* *5,60*E-TACHO *AD=180 *STIRNVERZ*E-VENT	3
004.20.53-1	310	4149.103.807	OUTPUT	1		00.00.0000		HP602LG*WT HINTEN*5,60 *O.SPEICHER	3
004.48.13-1	400	4235.106.001	SHIFT CONTROL	1		00.00.0000		HP602LG*24V*2P*1,1-3,3 *NMOT	3
004.48.13-1	410	4149.106.804	SHIFT CONTROL	1		00.00.0000		*G2.1	3
004.56.07-1	450	4139.131.050	DIPSTICK PARTS	1		00.00.0000		K01*TIEF*4-7GRAD L*ENTL	3
004.56.07-1	460	4149.131.002	OIL SUMP	1		00.00.0000		TIEF*ENTLEER-V.	3
004.56.07-1	470	4139.131.101	FILTER	1		00.00.0000			3
004.56.07-1	478	4139.131.815	PLATE	1		00.00.0000			3
004.59.10-1	480	4149.134.004	CONVERTER	1		00.00.0000		W390*TPC487*MUE1,98*TF4,70*A=81,25*LK=402*4166 711 146	3
004.59.10-1	488	4139.134.806	CONVERTER	1		00.00.0000		380*A= 81,25	3
004.62.06-1	490	4235.102.001	INPUT	1		00.00.0000		W400*LKR 402*ZW.RING	3
004.62.06-1	492	4235.102.400	INPUT	1		00.00.0000		AD=155* 4XM12X1,5X45 *STIRNVERZAHNUNG	3

VKF Incidence factor

ID Identification (output code)



Graphics	Pos.	Material number	Name	VKF	Amend. no.	Amend. start	Prod. no.	Material feature / tech. info.	ID
095.90.04-1	550	5079.147.027	HEAT EXCHANGER	1		00.00.0000		LG*HINTEN *O.SPEICHER *D=50*TG-ANSCHL*DIN-BAJ.	3

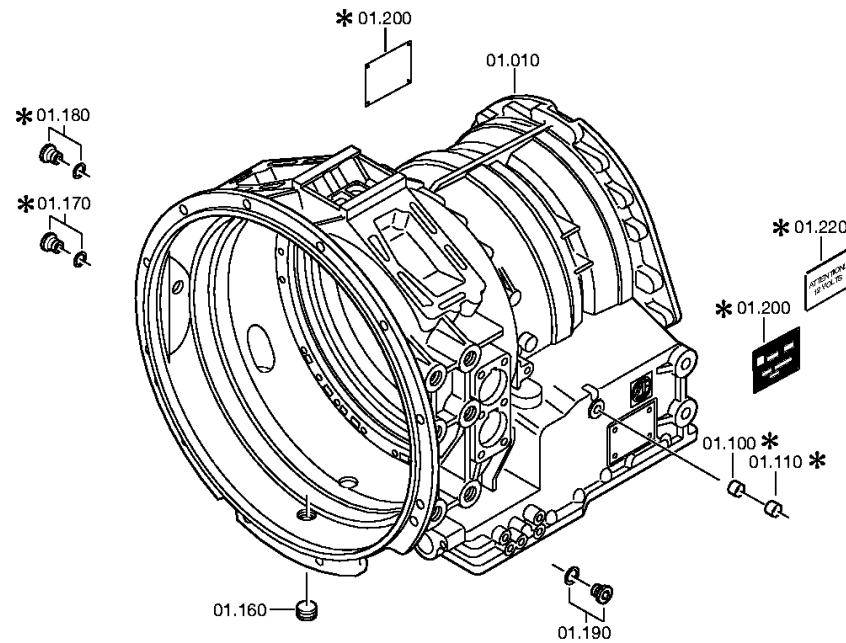
VKF Incidence factor

ID Identification (output code)



Bildtafel:
Figure: 004.01.09
Figure:
Figura:

je nach Stücklistenausführung
depending on spec. number
* suivant la nomenclature
secondo la distinta base





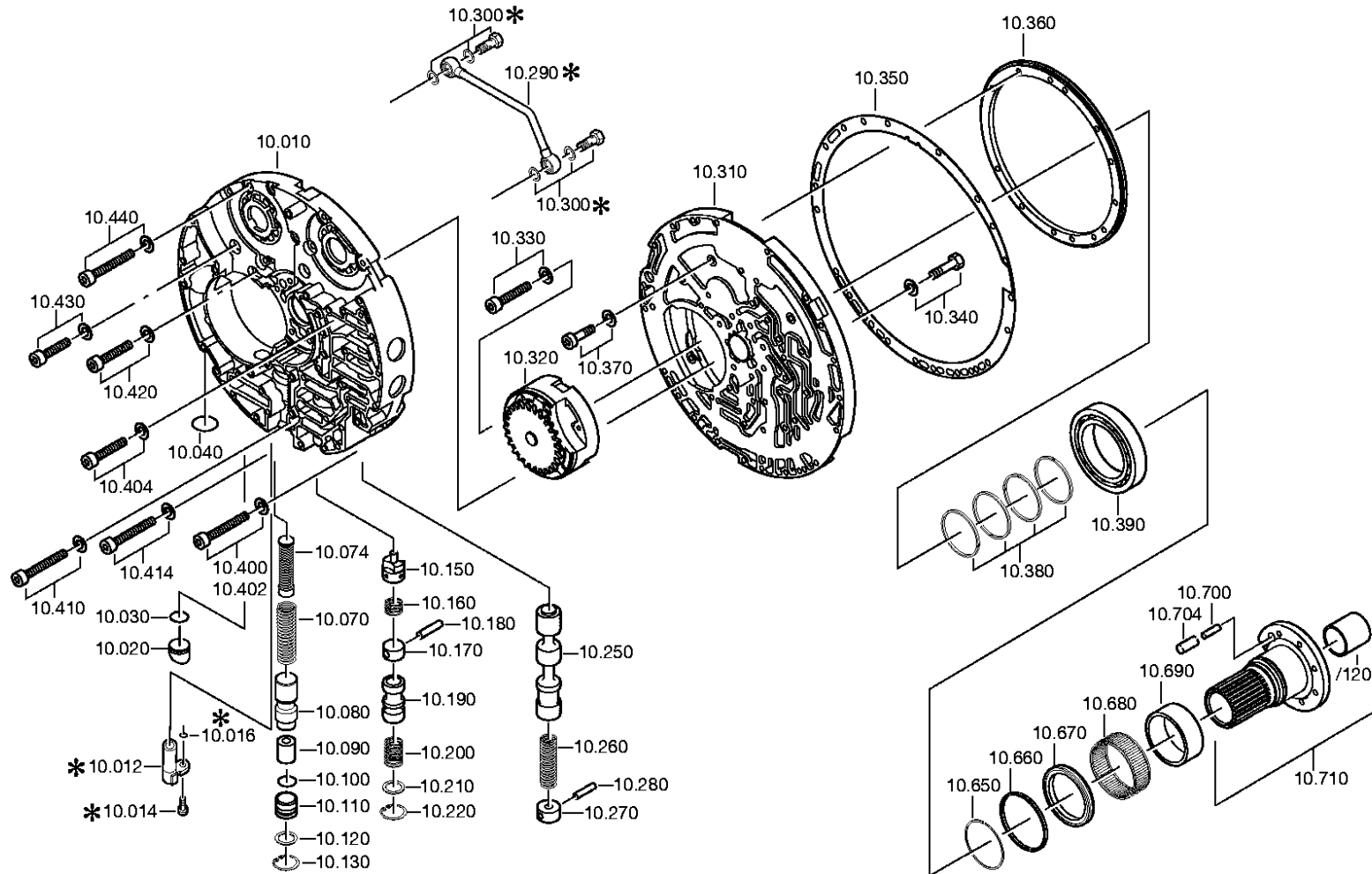
Pos.	Material number	Name	VKF	Amend. no.	Amend. start	Prod. no.	Material feature / tech. info.	OTK	External material no.	ID	Weight	SP
10	4149.201.032	GEARBOX HOUSING	1		00.00.0000		KPL.			3	0,000	
100	---	SEALING CAP	1		00.00.0000		12 DIN443 A3C			3	0,000	
---	0630.361.083	SEALING CAP	1		00.00.0000					5	1,500	
110	0630.361.083	SEALING CAP	1		00.00.0000					5	1,500	
160	---	SCREW PLUG	1		00.00.0000		M30X1,5 * 60N.M*O. DICHTRG.			3	0,000	
---	0636.301.054	SCREW PLUG	1		00.00.0000		M30X1,5			5	0,000	
180	---	SCREW PLUG	1	C0100557 0C10	00.00.0000	00.00.0000	M14X1,5 * 25N.M* DICHTRING			3	0,000	
---	0636.302.068	SCREW PLUG	1		00.00.0000		M14X1,5			5	15	
---	0634.801.151	SEALING RING	1		00.00.0000		14X20			5	2	
190	0501.326.079	SCREW PLUG	5	Z0000189 9810	26.08.2009	26.08.2009	M10X1			5	0,000	
200	---	TYPE PLATE	1		00.00.0000		WTB			3	0,000	
---	0730.365.241	TYPE PLATE	1		00.00.0000		EINHEITSSCH. VERDREHSICHER			5	0,000	
---	0730.365.217	TYPE PLATE	1	C0100717 4B10	00.00.0000	00.00.0000	ZF DRIVETECH JAPAN			5	0,000	
---	0730.365.242	TYPE PLATE	1	C0100260 5D10	00.00.0000	00.00.0000	ZF DO BRASIL LTDA.			5	0,000	

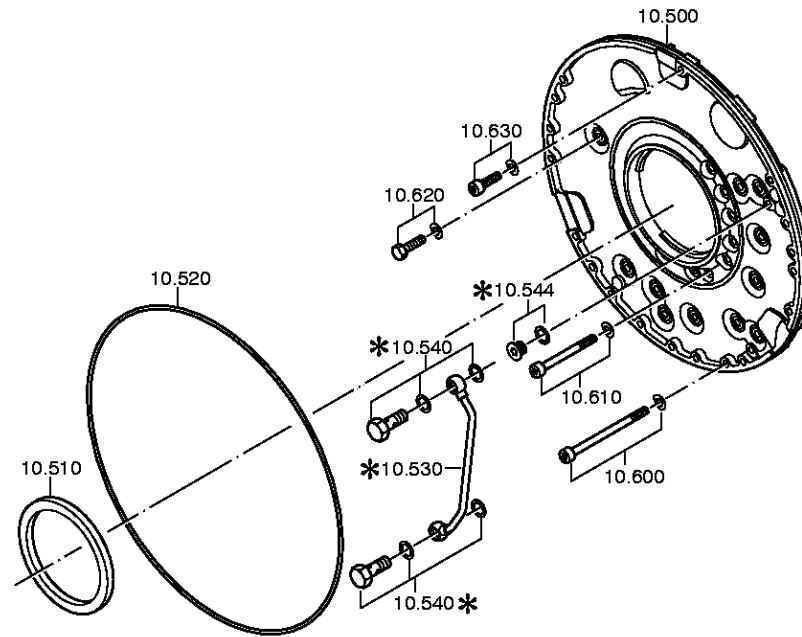
VKF Incidence factor

OTK Optional technical kit

ID Identification (output code)

SP Supplier plant







Pos.	Material number	Name	VKF	Amend. no.	Amend. start	Prod. no.	Material feature / tech. info.	OTK	External material no.	ID	Weight	SP
10	4180.210.011	CONTROL INSERT	1	C0100682 3D10	00.00.0000	00.00.0000	KPL. NMOT			3	0,000	
12	0501.314.432	INDTRANSMITTER	1		00.00.0000					5	0,028	
14	---	TORX SCREW	1		00.00.0000		M6X45			3	0,000	
---	0736.101.359	TORX SCREW	1	C0100799 3210	00.00.0000	00.00.0000	M6X45 IN 0736 101 363(2)			5	0,000	
16	0634.313.016	O-RING	1		00.00.0000		4X1,5			5	0,000	
20	4139.310.140	SPACER	1		00.00.0000					5	0,000	
30	0634.313.667	O-RING	1		00.00.0000		21X3,5			5	0,000	
40	0634.313.350	O-RING	1		00.00.0000		34X2,5			5	0,002	
70	0732.042.114	COMPRSPRING	1		00.00.0000					5	0,000	
74	4139.210.081	VALVE PARTS	1		00.00.0000		KPL.HAUPTDRUCKVENTIL			3	0,000	
80	4139.310.304	PISTON	1		00.00.0000					5	0,000	
90	4139.310.305	PISTON	1		00.00.0000		HAUPTDRUCKVENTIL			5	0,000	
100	0634.313.667	O-RING	1		00.00.0000		21X3,5			5	0,000	
110	4139.310.449	BUSH	1		00.00.0000		24,50			5	0,000	
120	0730.004.383	WASHER	1		00.00.0000		A=1,50			5	0,000	
130	0630.502.015	RETAINING RING	1		00.00.0000		30X1,2			5	1,600	
150	4139.310.041	PISTON	1		00.00.0000		SCHMIERDRUCKVENTIL			5	0,000	
160	0732.041.125	COMPRSPRING	1		00.00.0000					5	0,000	
170	4139.310.018	SPACER RING	1		00.00.0000		ENTHALT.IN 4139 310 462(2)			5	0,000	
180	0631.306.117	CYLINDRICAL PIN	1		00.00.0000		8X50			5	19	
190	4139.310.072	PISTON	1		00.00.0000		WANDLERGEGENDRUCKVENTIL			5	0,000	
200	0732.041.102	COMPRSPRING	1		00.00.0000					5	25	
210	0630.007.001	WASHER	1		00.00.0000					5	0,000	
220	0630.502.014	RETAINING RING	1		00.00.0000		28X1,2			5	0,002	
250	4149.310.025	PISTON	1		00.00.0000					5	0,000	
260	0732.042.236	COMPRSPRING	1		00.00.0000					5	0,000	
270	4139.310.017	SPACER RING	1		00.00.0000					5	0,000	
280	0631.306.117	CYLINDRICAL PIN	1		00.00.0000		8X50			5	19	
310	4149.210.016	OIL FEEDFLANGE	1	C0100416 8C10	00.00.0000	00.00.0000	KPL.STAHLBUCHSE+SI-RING			3	0,000	
320	4139.210.074	PRIMARY PUMP	1		00.00.0000		KPL.			3	0,000	
330	---	CAP SCREW	1		00.00.0000		M8X40 ISO4762/8.8 A4C			3	0,000	

VKF Incidence factor

OTK Optional technical kit

ID Identification (output code)

SP Supplier plant



Pos.	Material number	Name	VKF	Amend. no.	Amend. start	Prod. no.	Material feature / tech. info.	OTK	External material no.	ID	Weight	SP
---	0636.101.694	CAP SCREW	1		00.00.0000		M8X40			5	0,000	
---	0630.003.006	WASHER	1		00.00.0000					5	1,200	
340	---	HEXAGON BOLT	7		00.00.0000		M8X45 ISO4014/8.8 A3C			3	0,000	
---	0636.010.471	HEXAGON BOLT	7		00.00.0000		M8X45			5	20,800	
---	0630.003.006	WASHER	7		00.00.0000					5	1,200	
350	4182.310.004	INTERMEDIATE SHEET	1	C0100481 9E10	00.00.0000	00.00.0000				5	0,000	
360	4182.320.001	THRUST RING	1	C0100483 1E10	00.00.0000	00.00.0000				5	0,000	
370	---	CAP SCREW	3		00.00.0000		M8X12 DIN6912/8.8 A3C			3	0,000	
---	0636.102.207	CAP SCREW	3		00.00.0000		M8X12			5	0,000	
---	0630.003.006	WASHER	3		00.00.0000					5	1,200	
380	0734.401.251	PISTON RING	4	C0100416 8C10	00.00.0000	00.00.0000	65,1X70,0X3,5			5	0,000	
390	0750.116.265	BALL BEARING	1		00.00.0000		WTB 80,0X125,0X22,0			3	0,000	
400	---	CAP SCREW	3		00.00.0000		M8X55 ISO4762/8.8 A3C			3	0,000	
---	0636.101.602	CAP SCREW	3		00.00.0000		M8X55			5	25	
---	0630.003.006	WASHER	3		00.00.0000					5	1,200	
402	---	CAP SCREW	1		00.00.0000		M8X50 ISO4762/8.8 A3C			3	0,000	
---	0636.101.663	CAP SCREW	1		00.00.0000		M8X50			5	22,700	
---	0630.003.006	WASHER	1		00.00.0000					5	1,200	
404	---	CAP SCREW	1		00.00.0000		M8X55 ISO4762/8.8 A3C			3	0,000	
---	0636.101.602	CAP SCREW	1		00.00.0000		M8X55			5	25	
---	0630.003.006	WASHER	1		00.00.0000					5	1,200	
410	---	CAP SCREW	3		00.00.0000		M8X70 ISO4762/8.8 A3C			3	0,000	
---	0636.101.720	CAP SCREW	3		00.00.0000		M8X70			5	0,030	
---	0630.003.006	WASHER	3		00.00.0000					5	1,200	
414	---	CAP SCREW	1		00.00.0000		M8X70 ISO4762/8.8 A3C			3	0,000	
---	0636.101.720	CAP SCREW	1		00.00.0000		M8X70			5	0,030	
---	0630.003.006	WASHER	1		00.00.0000					5	1,200	
420	---	CAP SCREW	3		00.00.0000		M8X40 ISO4762/8.8 A4C			3	0,000	
---	0636.101.694	CAP SCREW	3		00.00.0000		M8X40			5	0,000	
---	0630.003.006	WASHER	3		00.00.0000					5	1,200	
430	---	CAP SCREW	3		00.00.0000		M8X45 ISO4762/8.8 A3C			3	0,000	

VKF Incidence factor

OTK Optional technical kit

ID Identification (output code)

SP Supplier plant



Pos.	Material number	Name	VKF	Amend. no.	Amend. start	Prod. no.	Material feature / tech. info.	OTK	External material no.	ID	Weight	SP
---	0636.101.685	CAP SCREW	3		00.00.0000		M8X45			5	0,020	
---	0630.003.006	WASHER	3		00.00.0000					5	1,200	
440	---	CAP SCREW	5		00.00.0000		M8X65 ISO4762/8.8 A3C			3	0,000	
---	0636.101.709	CAP SCREW	5		00.00.0000		M8X65			5	0,020	
---	0630.003.006	WASHER	5		00.00.0000					5	1,200	
500	4139.310.434	COVER PLATE	1		00.00.0000		G1+G2.1			5	0,000	
510	---	SHAFT SEAL	1		00.00.0000		125X150X10			3	0,000	
---	0750.111.044	SHAFT SEAL	1	C0100795 6D10	00.00.0000	00.00.0000	WTB 125X150X10			3	0,000	
520	0634.313.146	O-RING	1		00.00.0000		425X3,5			5	0,000	
530	4149.210.005	PIPE	1		00.00.0000		KPL.			3	0,000	
540	---	UNION SCREW	2	C0100293 8C10	00.00.0000	00.00.0000	6S DIN7643			3	0,000	
---	0637.835.021	UNION SCREW	2	C0100332 4F10	00.00.0000	00.00.0000				5	0,000	
---	0634.801.015	SEALING RING	2		00.00.0000		10X14			5	0,001	
600	---	CAP SCREW	14	C0100391 3F10	00.00.0000	00.00.0000	M8X130 ISO4762/10.9 A3C			3	0,000	
---	0636.115.159	CAP SCREW	14		00.00.0000		M8X130			5	0,000	
---	0634.803.003	SEALING RING	14		00.00.0000		8X15X1			5	0,000	
610	---	HEXAGON BOLT	8		00.00.0000		M8X85 ISO4014/8.8 A3C			3	0,000	
---	0636.010.585	HEXAGON BOLT	8		00.00.0000		M8X85			5	0,000	
---	0634.803.003	SEALING RING	8		00.00.0000		8X15X1			5	0,000	
620	---	HEXAGON BOLT	11		00.00.0000		M8X20 ISO4017/8.8 A3C			3	0,000	
---	0636.015.299	HEXAGON BOLT	11		00.00.0000		M8X20			5	0,010	
---	0634.803.003	SEALING RING	11		00.00.0000		8X15X1			5	0,000	
630	---	CAP SCREW	1		00.00.0000		M8X35 ISO4762/8.8 A3C			3	0,000	
---	0636.101.356	CAP SCREW	1		00.00.0000		M8X35			5	18	
---	0634.803.003	SEALING RING	1		00.00.0000		8X15X1			5	0,000	
650	0630.513.133	SNAP RING	1		00.00.0000					5	8,900	
660	0734.401.080	PISTON RING	1		00.00.0000					5	0,000	
670	4128.303.012	PISTON SUPPORT	1		00.00.0000					5	0,000	
680	0750.115.517	NEEDLE CAGE	1		00.00.0000		WTB 80,0X88,0X30,0			3	0,000	
690	0635.295.034	INTERNAL RING	1		00.00.0000		70X80X30			5	0,000	

VKF Incidence factor

OTK Optional technical kit

ID Identification (output code)

SP Supplier plant



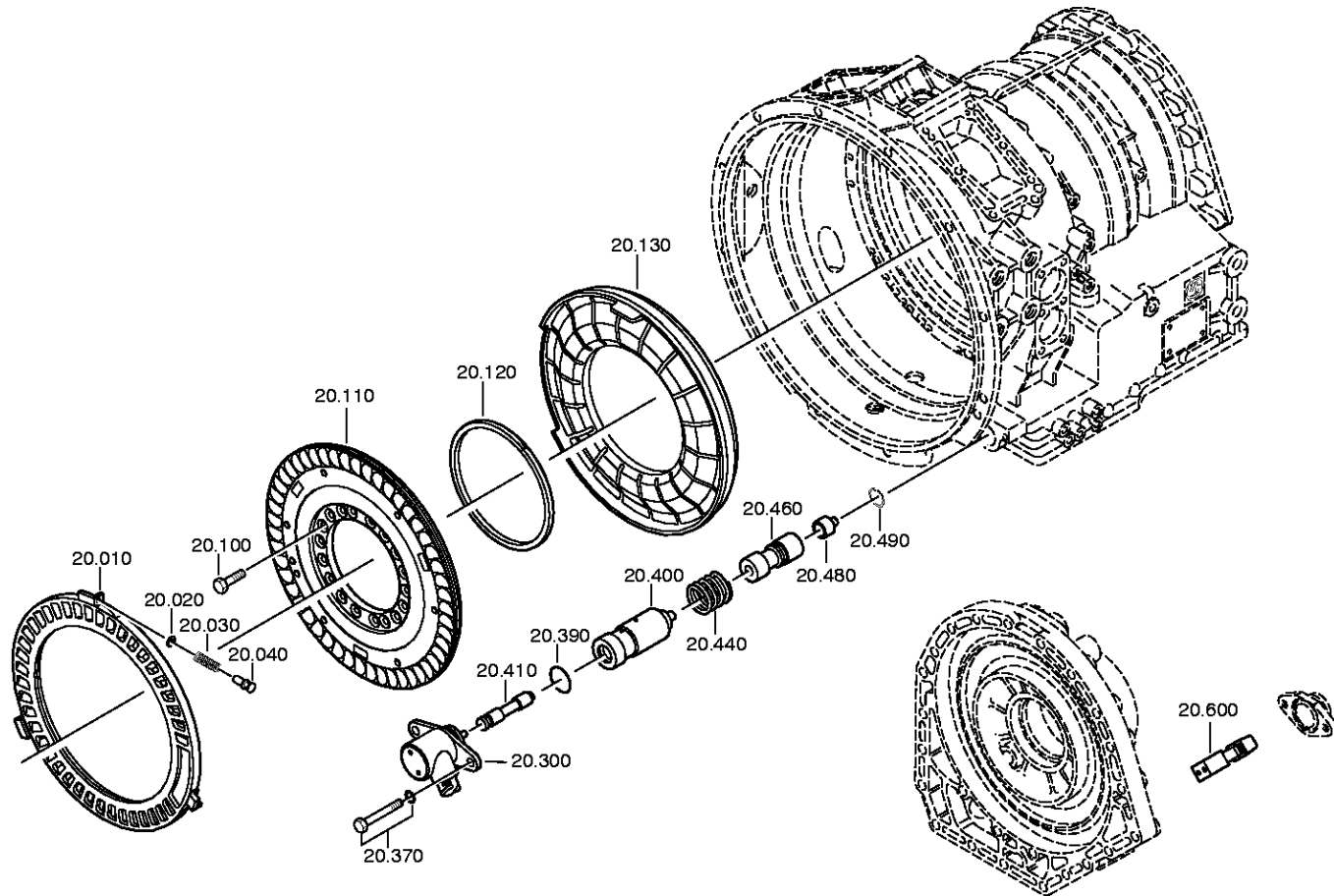
Pos.	Material number	Name	VKF	Amend. no.	Amend. start	Prod. no.	Material feature / tech. info.	OTK	External material no.	ID	Weight	SP
700	0631.329.320	SLOTPIN	1		00.00.0000		16X35			5	0,000	
704	0631.329.319	SLOTPIN	1		00.00.0000		10X35			5	0,000	
710	4139.210.076	STATOR SHAFT	1		00.00.0000		KPL.			3	0,000	
7120	4139.210.082	BUSH	1		00.00.0000		KPL.			3	0,000	
860	4149.206.137	CABLE CONNECT	1		00.00.0000		KPL.ECOMAT 2*NMOT*2POL			3	0,000	

VKF Incidence factor

OTK Optional technical kit

ID Identification (output code)

SP Supplier plant





Pos.	Material number	Name	VKF	Amend. no.	Amend. start	Prod. no.	Material feature / tech. info.	OTK	External material no.	ID	Weight	SP
10	4139.320.085	STATOR RING	1		00.00.0000					5	1,700	
20	4139.320.009	SPRING SEAT	3		00.00.0000					5	7	
30	0732.041.934	COMPRSPRING	3		00.00.0000					5	0,000	
40	4149.220.001	ABSORBER	3	C0100924 7C10	00.00.0000	00.00.0000	KPL.			3	0,000	
100	0636.010.300	HEXAGON BOLT	18		00.00.0000		M8X40			5	0,000	
110	4139.320.084	ROTOR	1	C0100898 0B10	00.00.0000	00.00.0000				5	0,000	
120	0734.401.277	PISTON RING	1		00.00.0000		197,6X210,0X7,0			5	0,000	
130	4149.320.033	SEALING WASHER	1	C0100530 7F10	00.00.0000	00.00.0000				5	0,000	
300	0501.316.525	MAGNET	1		00.00.0000					5	0,000	
370	---	HEXAGON BOLT	2		00.00.0000		M8X22 ISO4017/8.8 A3C			3	0,000	
---	0636.015.367	HEXAGON BOLT	2		00.00.0000		M8X22			5	0,000	
---	0630.001.075	WASHER	2		00.00.0000					5	0,002	
390	0634.313.017	O-RING	1		00.00.0000		27X3			5	0,002	
400	4149.320.018	BUSH	1		00.00.0000		G2.1			5	0,000	
410	4149.320.015	PISTON	1		00.00.0000		G2.1 REGELKOLBEN RR3			5	0,000	
440	1204.318.011	COMPRSPRING	1		00.00.0000					5	0,010	
460	4149.320.023	PISTON	1	C0100920 1A10	00.00.0000	00.00.0000	G2.1 REGELKOLBEN R3			5	0,000	
480	4149.320.024	PISTON	1	C0100920 1A10	00.00.0000	00.00.0000	G2.1			5	0,000	
490	0630.502.006	RETAINING RING	1		00.00.0000		19X1			5	0,007	
600	---	RESISTOR	1		00.00.0000		WTB *K= 1,96-150,00			3	0,000	
---	6029.201.652	RESISTOR	1		00.00.0000		KPL.RET.ABGLEICH 150,00K			3	0,000	
---	6029.201.651	RESISTOR	1		00.00.0000		KPL.RET.ABGLEICH 100,00K			3	0,000	
---	6029.201.650	RESISTOR	1		00.00.0000		KPL.RET.ABGLEICH 75,00K			3	0,000	
---	6029.201.649	RESISTOR	1		00.00.0000		KPL.RET.ABGLEICH 57,60K			3	0,000	
---	6029.201.648	RESISTOR	1		00.00.0000		KPL.RET.ABGLEICH 46,40K			3	0,000	
---	6029.201.647	RESISTOR	1		00.00.0000		KPL.RET.ABGLEICH 37,40K			3	0,000	
---	6029.201.646	RESISTOR	1		00.00.0000		KPL.RET.ABGLEICH 31,60K			3	0,000	
---	6029.201.645	RESISTOR	1		00.00.0000		KPL.RET.ABGLEICH 26,10K			3	0,000	
---	6029.201.644	RESISTOR	1		00.00.0000		KPL.RET.ABGLEICH 22,10K			3	0,000	

VKF Incidence factor

OTK Optional technical kit

ID Identification (output code)

SP Supplier plant



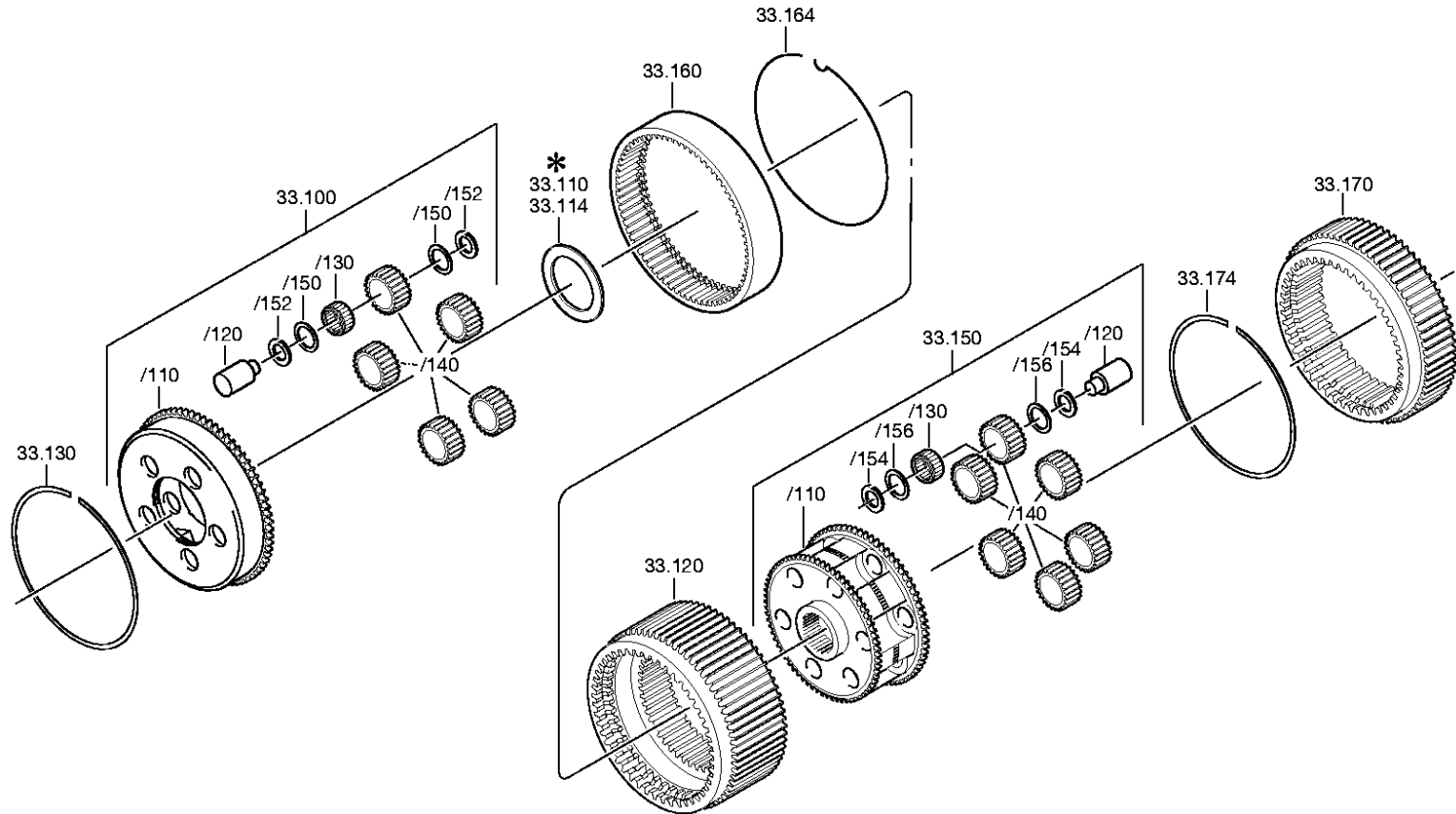
Pos.	Material number	Name	VKF	Amend. no.	Amend. start	Prod. no.	Material feature / tech. info.	OTK	External material no.	ID	Weight	SP
---	6029.201.643	RESISTOR	1		00.00.0000		KPL.RET.ABGLEICH 18,70K			3	0,000	
---	6029.201.642	RESISTOR	1		00.00.0000		KPL.RET.ABGLEICH 15,80K			3	0,000	
---	6029.201.641	RESISTOR	1		00.00.0000		KPL.RET.ABGLEICH 13,30K			3	0,000	
---	6029.201.640	RESISTOR	1		00.00.0000		KPL.RET.ABGLEICH 11,30K			3	0,000	
---	6029.201.639	RESISTOR	1		00.00.0000		KPL.RET.ABGLEICH 9,31K			3	0,000	
---	6029.201.638	RESISTOR	1		00.00.0000		KPL.RET.ABGLEICH 7,68K			3	0,000	
---	6029.201.637	RESISTOR	1		00.00.0000		KPL.RET.ABGLEICH 6,34K			3	0,000	
---	6029.201.636	RESISTOR	1		00.00.0000		KPL.RET.ABGLEICH 5,11K			3	0,000	
---	6029.201.635	RESISTOR	1		00.00.0000		KPL.RET.ABGLEICH 3,92K			3	0,000	
---	6029.201.634	RESISTOR	1		00.00.0000		KPL.RET.ABGLEICH 2,94K			3	0,000	
---	6029.201.633	RESISTOR	1		00.00.0000		KPL.RET.ABGLEICH 1,96K			3	0,000	

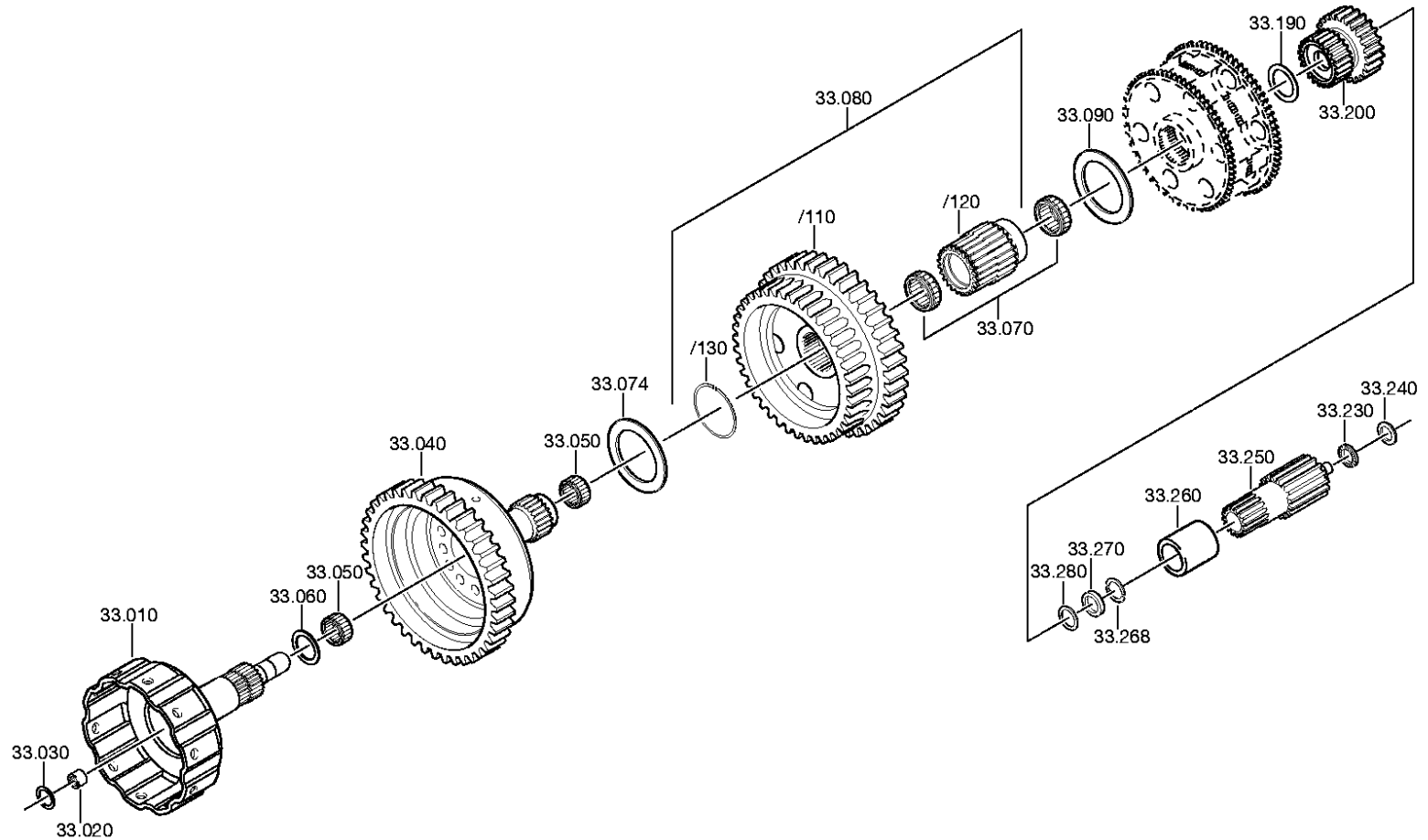
VKF Incidence factor

OTK Optional technical kit

ID Identification (output code)

SP Supplier plant







Pos.	Material number	Name	VKF	Amend. no.	Amend. start	Prod. no.	Material feature / tech. info.	OTK	External material no.	ID	Weight	SP
10	4139.233.062	INPUT SHAFT	1		00.00.0000		KPL. IN 4139 233 100(1)			3	0,000	
20	0750.115.518	NEEDLE SLEEVE	1		00.00.0000		WTB 18,0X24,0X16,0			3	0,000	
30	0730.150.625	THRUST WASHER	1		00.00.0000		A=1,00 IN 0730 150 624(2)			5	0,000	
40	4139.233.063	QUILL SHAFT	1		00.00.0000		KPL.			3	0,000	
50	0735.320.791	NEEDLE CAGE	2		00.00.0000		45,0X50,0X17,0 FA.INA			5	0,000	
60	0730.150.626	THRUST WASHER	1		00.00.0000		A=1,00 IN 0730 150 624(2)			5	0,000	
70	0735.320.792	NEEDLE CAGE	2		00.00.0000		62,0X67,0X20,0 FA.INA			5	0,000	
74	0730.150.630	THRUST WASHER	1		00.00.0000		A=2,50 IN 0730 150 624(2)			5	0,000	
80	4139.233.205	DISC CARRIER	1		00.00.0000		KPL.			3	0,000	
/110	4139.333.662	DISC CARRIER	1		00.00.0000					5	0,000	
/120	4149.333.388	SUN GEAR	1	Z0000545 8610	23.04.2010	23.04.2010				5	0,000	
/130	0630.513.124	SNAP RING	1		00.00.0000					5	10	
90	0730.150.629	THRUST WASHER	1		00.00.0000		A=2,00 IN 0730 150 624(2)			5	0,000	
100	4139.233.193	PLANETARY DRIVE	1		00.00.0000		KPL. I*HP600			3	0,000	
/110	4149.333.036	PLANET CARRIER	1		00.00.0000		HP500			5	0,000	
/120	4139.333.242	BEARING PIN	5		00.00.0000					5	0,000	
/130	0735.320.508	NEEDLE CAGE	5		00.00.0000		30,0X40,0X25,0 FA.INA			5	0,000	
/140	---	PLANET GEAR SET	1	C0100746 4D10	00.00.0000	00.00.0000	WTB			3	0,000	
---	4149.233.016	PLANET GEAR SET	1		00.00.0000		KPL.BORUNGSHONEN			3	0,000	
---	4139.233.316	PLANET GEAR SET	1		00.00.0000		KPL.			3	0,000	
/150	0730.104.081	THRUST WASHER	10		00.00.0000		A=1,00 IN 0730 104 901(2)			5	0,000	
/152	0730.105.013	THRUST WASHER	10		00.00.0000		ENTHALT.IN 0730 105 254(2)			5	0,000	
114	0730.150.628	THRUST WASHER	1		00.00.0000		A=2,00 IN 0730 150 624(2)			5	0,000	
120	4139.333.247	RING GEAR	1	C0100230 2D10	00.00.0000	00.00.0000	Z85			5	0,000	
130	0730.513.168	RETAINING RING	1		00.00.0000		ENTHALT.IN 0730 513 337(2)			5	0,000	
150	4149.233.006	PLANETARY DRIVE	1		00.00.0000		KPL. II*HP600*ECO 2PLUS			3	0,000	
/110	4149.233.005	PLANET CARRIER	1		00.00.0000		KPL.ECOMAT 2PLUS			3	0,000	
/120	4139.333.218	BEARING PIN	6		00.00.0000					5	0,000	
/130	0735.358.167	ROLLER CAGE	6		00.00.0000		30,0X41,0X32,0 FA.INA			5	0,000	
/140	---	PLANET GEAR SET	1	C0100650 3D10	00.00.0000	00.00.0000	WTB			3	0,000	

VKF Incidence factor

OTK Optional technical kit

ID Identification (output code)

SP Supplier plant



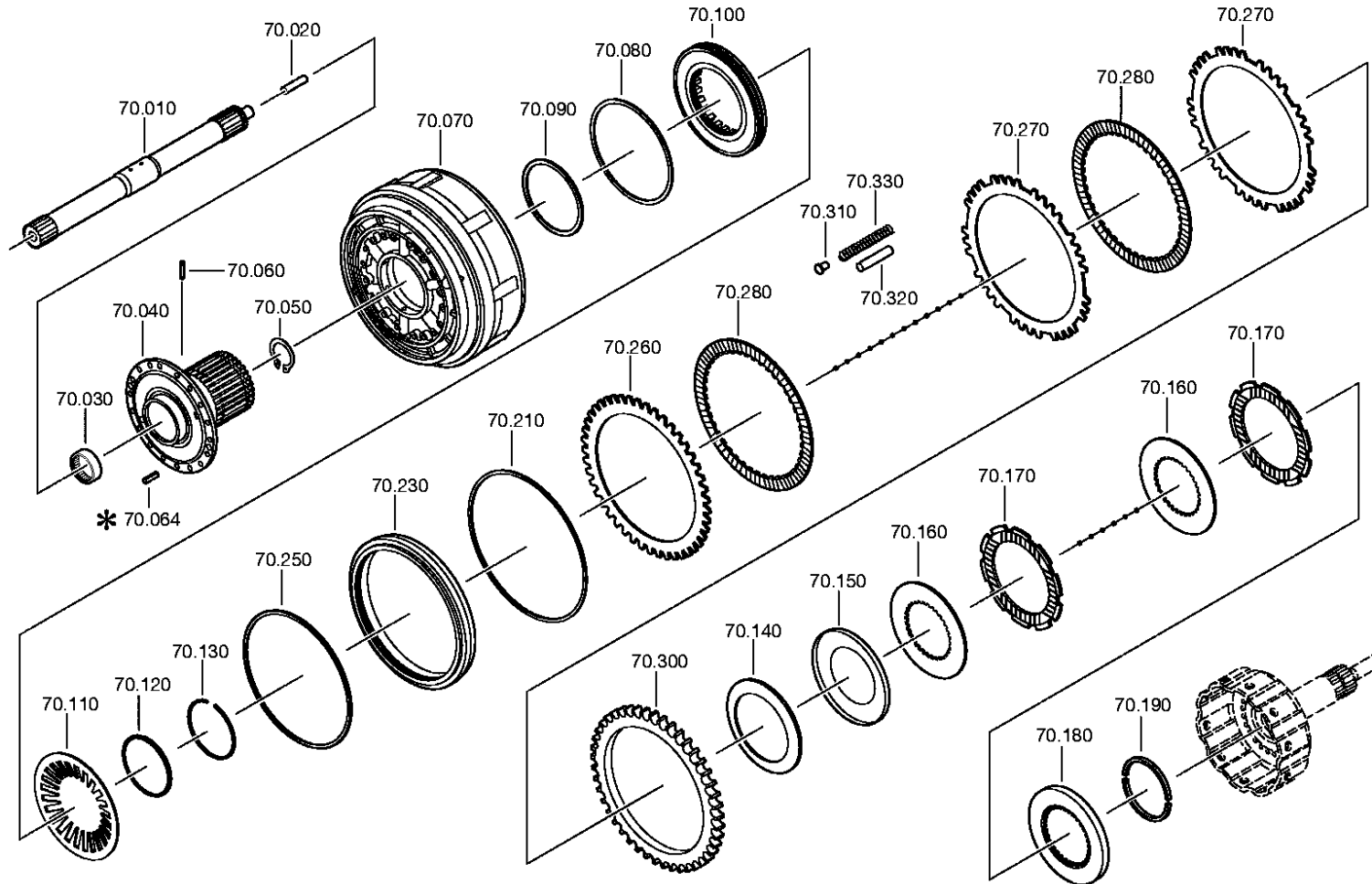
Pos.	Material number	Name	VKF	Amend. no.	Amend. start	Prod. no.	Material feature / tech. info.	OTK	External material no.	ID	Weight	SP
---	4149.233.009	PLANET GEAR SET	1		00.00.0000		KPL.BOHRUNGSHONEN			3	0,000	
---	4139.233.317	PLANET GEAR SET	1		00.00.0000		KPL.			3	0,000	
/154	0730.104.081	THRUST WASHER	12		00.00.0000		A=1,00 IN 0730 104 901(2)			5	0,000	
/156	0730.104.081	THRUST WASHER	12		00.00.0000		A=1,00 IN 0730 104 901(2)			5	0,000	
160	4139.333.244	RING GEAR	1	C0100230 2D10	00.00.0000	00.00.0000	Z85			5	0,000	
164	0730.513.278	SNAP RING	1	C0100230 2D10	00.00.0000	00.00.0000	A=2,25			5	0,000	
170	4139.333.668	RING GEAR	1	C0100230 2D10	00.00.0000	00.00.0000				5	0,000	
174	0730.503.079	RETAINING RING	1	C0100230 2D10	00.00.0000	00.00.0000	ENTHALT.IN 0730 513 337(2)			5	0,000	
190	0730.150.627	THRUST WASHER	1		00.00.0000		A=1,50 IN 0730 150 624(2)			5	0,000	
200	5079.333.003	SUN GEAR	1		00.00.0000					5	0,000	
230	0635.302.050	AXIAL NEEDLE CAGE	1		00.00.0000		15X28X2			5	0,000	
240	---	AXIAL WASHER	3		00.00.0000		WTB 0730 104 944(3)-A= 1,00- 1,80(ABSTUFUNG:0,20MM)			3	0,000	
---	0730.104.948	AXIAL WASHER	3		00.00.0000		A=1,80 IN 0730 104 944(2)			5	0,000	
---	0730.104.947	AXIAL WASHER	3		00.00.0000		A=1,50 IN 0730 104 944(2)			5	0,000	
---	0730.104.946	AXIAL WASHER	3		00.00.0000		A=1,20 IN 0730 104 944(2)			5	0,000	
---	0730.104.945	AXIAL WASHER	3		00.00.0000		A=1,13 IN 0730 104 944(2)			5	0,000	
---	0635.290.030	AXIAL WASHER	3		00.00.0000		15X28X1			5	0,000	
250	5079.333.004	SUN GEAR SHAFT	1		00.00.0000					5	0,000	
260	0635.295.030	INTERNAL RING	1		00.00.0000		45X55X22			5	0,000	
268	0730.108.489	SPLIT RING	2		00.00.0000		A=2,50			5	0,000	
270	0730.108.490	ANGLE RING	1		00.00.0000		A=5,00			5	0,000	
280	---	SHIM	2		00.00.0000		WTB 0730 105 590(3)-A= 1,00- 1,80(ABSTUFUNG:0,20MM)			3	0,000	
---	0730.105.596	SHIM	2		00.00.0000		A=1,80 IN 0730 105 590(2)			5	0,000	
---	0730.105.597	SHIM	2		00.00.0000		A=1,60 IN 0730 105 590(2)			5	0,000	
---	0730.105.598	SHIM	2		00.00.0000		A=1,40 IN 0730 105 590(2)			5	0,000	
---	0730.105.599	SHIM	2		00.00.0000		A=1,20 IN 0730 105 590(2)			5	0,000	
---	0730.105.600	SHIM	2		00.00.0000		A=1,00 IN 0730 105 590(2)			5	0,000	

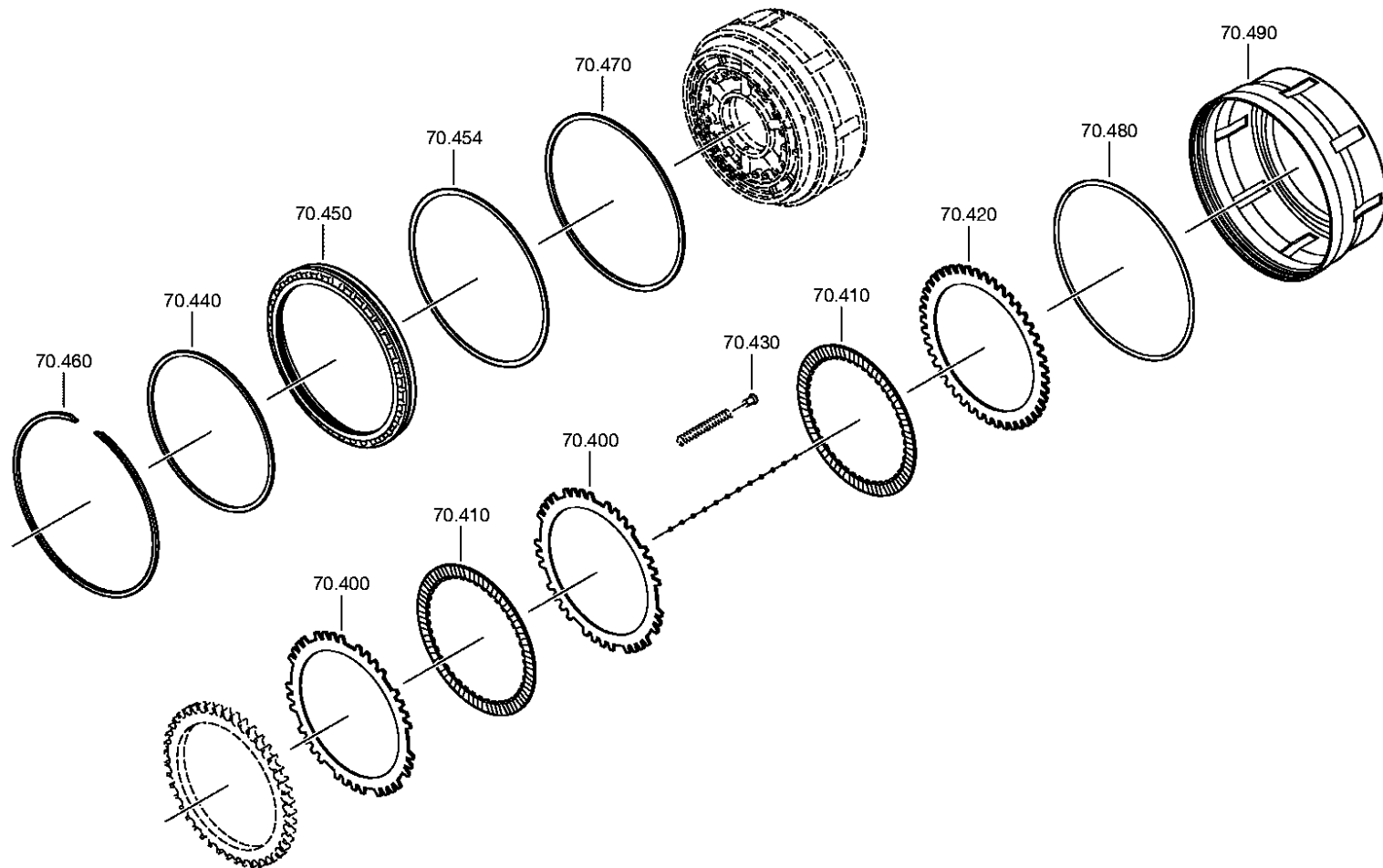
VKF Incidence factor

OTK Optional technical kit

ID Identification (output code)

SP Supplier plant







Pos.	Material number	Name	VKF	Amend. no.	Amend. start	Prod. no.	Material feature / tech. info.	OTK	External material no.	ID	Weight	SP
10	4139.370.078	TURBINE SHAFT	1	C0100211 8B10	00.00.0000	00.00.0000				5	0,000	
20	0730.062.250	PIPE	1		00.00.0000		A=46,00			5	0,000	
30	0750.115.519	NEEDLE SLEEVE	1		00.00.0000		WTB 45,0X52,0X16,0			3	0,000	
40	4149.333.016	HUB	1		00.00.0000		IN 4149 333 021(0)			5	0,000	
50	0630.531.047	RETAINING RING	1		00.00.0000		38X2,5			5	8	
60	0635.490.065	NEEDLE ROLLER	3	C0100822 2A10	00.00.0000	00.00.0000	4X29,8			5	0,000	
64	0631.329.095	SLOTPIN	2		00.00.0000		10X18			5	0,000	
70	4149.270.002	CLUTCH CARRIER	1	C0100820 4B10	00.00.0000	00.00.0000	KPL.			3	0,000	
80	0734.307.132	LIP SEALING RING	1		00.00.0000		ENTHALT.IN 0734 307 196(1)			5	0,000	
90	0734.307.168	LIP SEALING RING	1		00.00.0000		ENTHALT.IN 0734 307 196(1)			5	0,010	
100	4149.370.056	PISTON	1	C0100792 1D10	00.00.0000	00.00.0000				5	0,000	
110	0732.000.078	CUP SPRING	1		00.00.0000					5	0,000	
120	4139.333.040	FIXING PLATE	1		00.00.0000					5	0,000	
130	0630.513.028	SNAP RING	1		00.00.0000					5	0,000	
140	0732.000.169	CUP SPRING	1		00.00.0000					5	0,000	
150	4139.333.631	FIXING PLATE	1		00.00.0000					5	0,000	
160	---	ICLUTCH DISC	8		00.00.0000		WTB*A 4139 370 036(1)-A=2,00- 2,50(ABSTUFUNG:0,50MM)			3	0,000	
---	4139.333.765	ICLUTCH DISC	8		00.00.0000		A=2,50 IN 4139 370 036(1)			5	0,000	
---	4139.333.036	ICLUTCH DISC	8		00.00.0000		A=2,00 IN 4139 370 036(1)			5	0,000	
170	4139.270.035	OCLUTCH DISC	8	C0100405 2D10	00.00.0000	00.00.0000	KPL.			3	0,000	
180	---	END SHIM	1	C0100649 3E10	00.00.0000	00.00.0000	WTB			3	0,000	
---	4139.333.694	END SHIM	1		00.00.0000					5	0,000	
---	4149.333.033	END SHIM	1		00.00.0000		ZBR			5	0,000	
190	6600.300.048	SPLIT RING	2		00.00.0000					5	0,000	
210	0634.305.087	PISTON RING	1		00.00.0000		250X260X2,2			5	0,000	
230	4139.333.545	PISTON	1		00.00.0000		B IN 4139 333 543(1)			5	0,000	

VKF Incidence factor

OTK Optional technical kit

ID Identification (output code)

SP Supplier plant



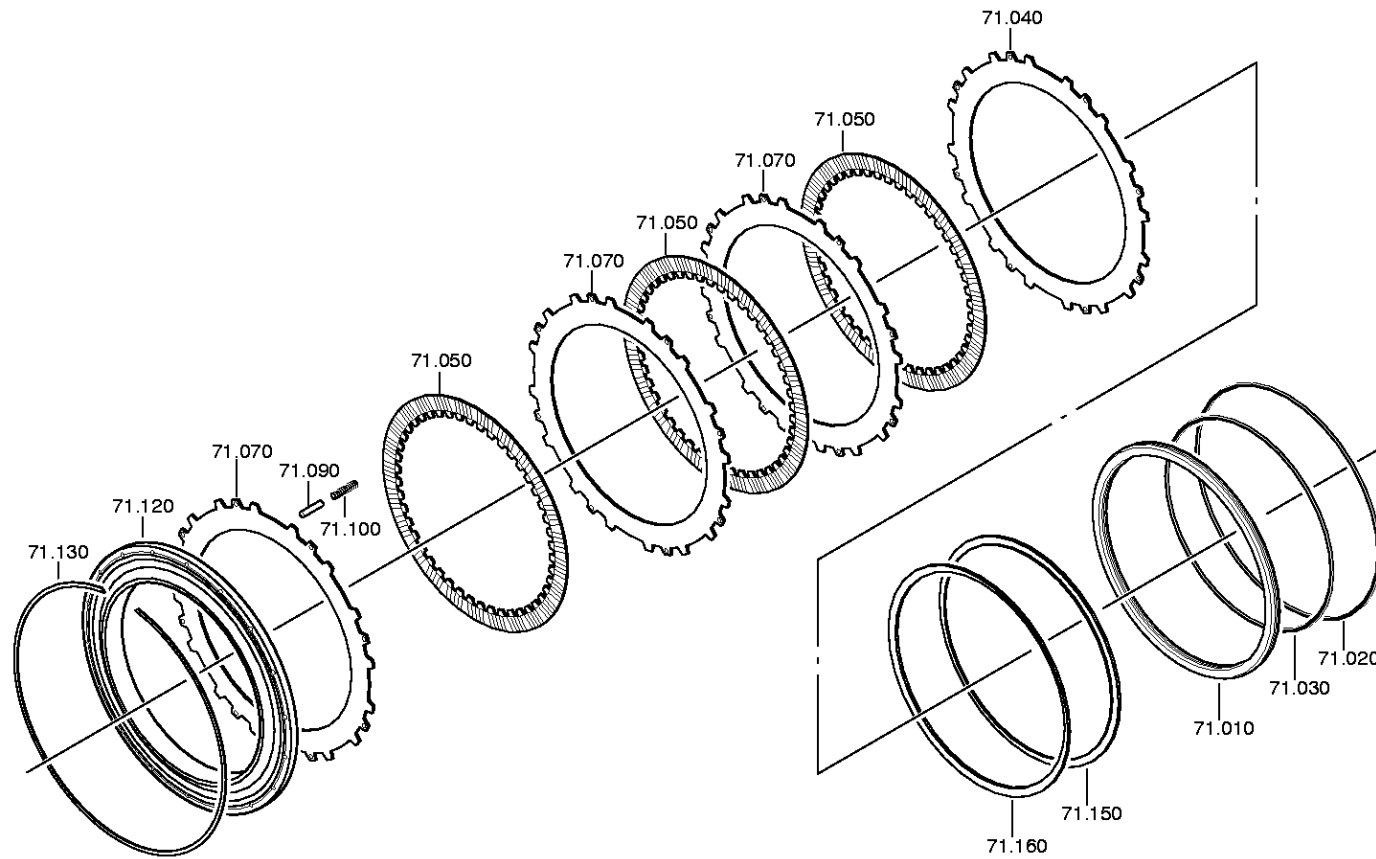
Pos.	Material number	Name	VKF	Amend. no.	Amend. start	Prod. no.	Material feature / tech. info.	OTK	External material no.	ID	Weight	SP
250	0734.317.010	PISTON RING	1		00.00.0000		ENTHALT.IN 0734 317 019(2)			5	0,000	
260	4139.333.373	DISC	1		00.00.0000		ENTHALT.IN 4139 333 372(1)			5	0,000	
270	---	OCLUTCH DISC	4		00.00.0000		WTB*B*C 4139 333 758(1)-A=2,00- 2,50(ABSTUFUNG:0,50MM)			3	0,000	
---	4139.333.759	OCLUTCH DISC	4		00.00.0000		A=2,50 IN 4139 333 758(1)			5	0,000	
---	4139.333.172	OCLUTCH DISC	4		00.00.0000		A=2,00 IN 4139 333 758(1)			5	0,000	
280	4139.270.036	ICLUTCH DISC	5	C0100405 1D10	00.00.0000	00.00.0000	KPL.			3	0,000	
300	4139.370.008	END SHIM	1		00.00.0000		ENTHALT.IN 4139 370 017(1)			5	0,000	
310	4139.333.197	PIN	9		00.00.0000					5	0,000	
320	0731.201.560	PIN	2		00.00.0000		ENTHALT.IN 0731 201 410(2)			5	0,000	
330	0732.041.421	COMPRSPRING	9		00.00.0000					5	0,000	
400	---	OCLUTCH DISC	3	C0100820 4B10	00.00.0000	00.00.0000	WTB* *C 4149 370 003(1)-A=2,00- 3,00(ABSTUFUNG:0,50MM)			3	0,000	
---	4149.370.004	OCLUTCH DISC	3		00.00.0000		A=2,50 IN 4149 370 003(1)			5	0,000	
---	4149.370.005	OCLUTCH DISC	3		00.00.0000		A=2,00 IN 4149 370 003(1)			5	0,000	
---	4149.370.001	OCLUTCH DISC	3		00.00.0000		A=3,00 IN 4149 370 003(1)			5	0,000	
410	4139.270.036	ICLUTCH DISC	4	C0100405 1D10	00.00.0000	00.00.0000	KPL.			3	0,000	
420	4139.333.437	DISC	1		00.00.0000					5	0,000	
430	4139.333.197	PIN	9		00.00.0000					5	0,000	
440	0734.307.137	LIP SEALING RING	1		00.00.0000		ENTHALT.IN 0734 307 196(1)			5	0,000	
450	4139.270.039	PISTON	1	C0100798 7A10	00.00.0000	00.00.0000	KPL.C*MEMBRANE			3	0,000	
454	4139.370.016	RING	1	C0100798 7A10	00.00.0000	00.00.0000				5	0,000	
460	0730.513.120	RETAINING RING	1		00.00.0000					5	0,000	
470	0734.307.141	LIP SEALING RING	1		00.00.0000		ENTHALT.IN 0734 307 196(1)			5	0,000	
480	0634.349.521	O-RING	1		00.00.0000		310X2,5			5	0,000	
490	4149.370.002	POT	1	C0100645 4B10	00.00.0000	00.00.0000				5	0,000	

VKF Incidence factor

OTK Optional technical kit

ID Identification (output code)

SP Supplier plant





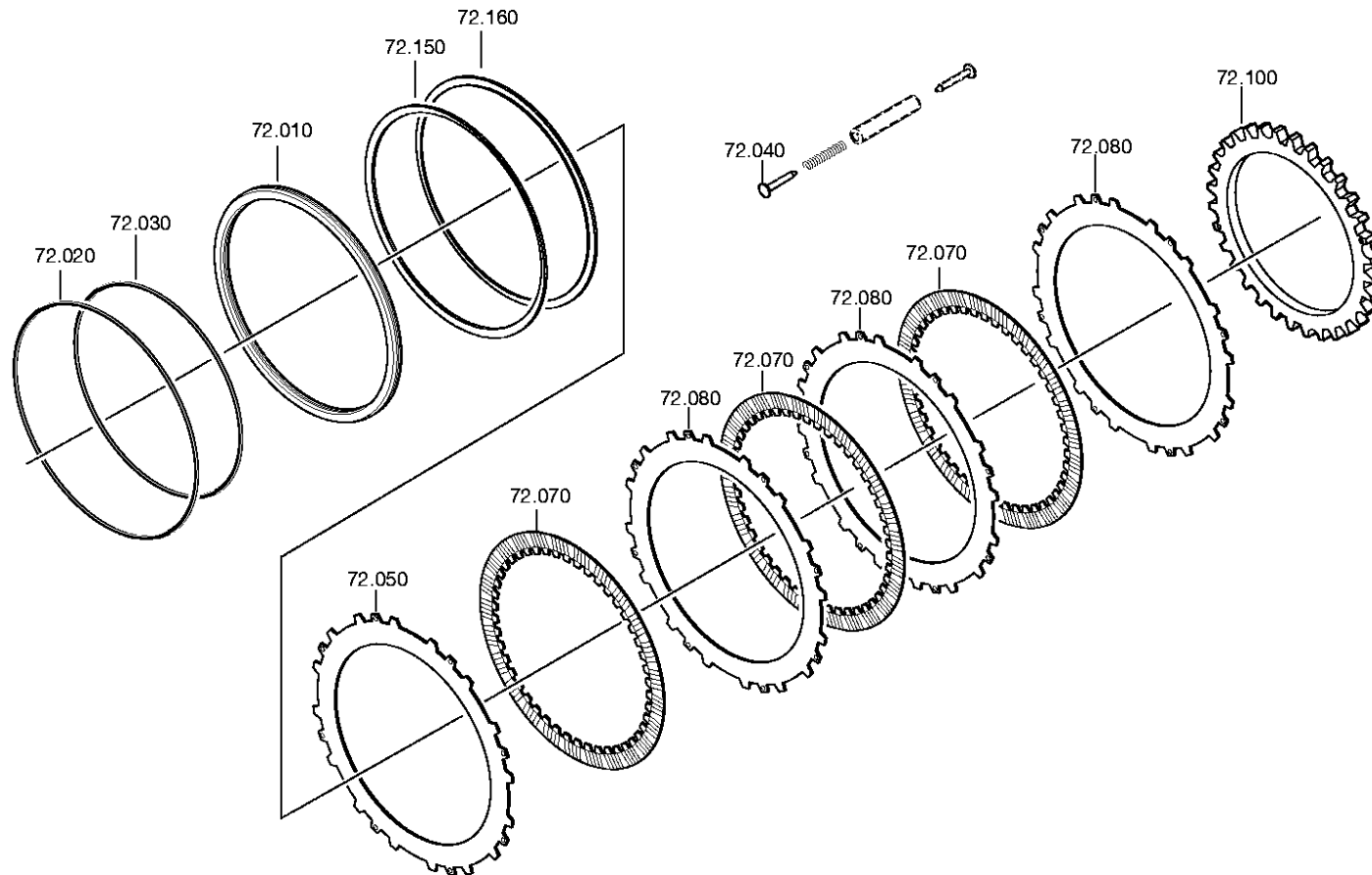
Pos.	Material number	Name	VKF	Amend. no.	Amend. start	Prod. no.	Material feature / tech. info.	OTK	External material no.	ID	Weight	SP
10	4149.371.001	PISTON	1		00.00.0000					5	0,000	
20	0734.307.137	LIP SEALING RING	1		00.00.0000		ENTHALT.IN 0734 307 196(1)			5	0,000	
30	0734.307.138	LIP SEALING RING	1		00.00.0000		ENTHALT.IN 0734 307 196(1)			5	0,000	
40	4139.333.263	OCLUTCH DISC	1		00.00.0000		A=3,00 IN 4139 333 760(1)			5	0,000	
50	4139.233.307	ICLUTCH DISC	4	C0100405 3D10	00.00.0000	00.00.0000	KPL.			3	0,000	
70	---	OCLUTCH DISC	4		00.00.0000		WTB*D 4139 333 760(1)-A= 2,00- 3,50(ABSTUFUNG:0,50MM)			3	0,000	
---	4139.333.263	OCLUTCH DISC	4		00.00.0000		A=3,00 IN 4139 333 760(1)			5	0,000	
---	4139.333.745	OCLUTCH DISC	4		00.00.0000		A=2,50 IN 4139 333 760(1)			5	0,000	
---	4139.333.015	OCLUTCH DISC	4		00.00.0000		A=2,00 IN 4139 333 760(1)			5	0,000	
---	4149.333.009	OCLUTCH DISC	4		00.00.0000		A=3,5 IN 4139 333 760(1)			5	0,000	
90	0731.201.483	PIN	8		00.00.0000					5	0,000	
100	0732.042.471	COMPRSPRING	8		00.00.0000					5	0,000	
120	4149.371.005	END SHIM	1		00.00.0000					5	0,000	
130	0630.513.178	SNAP RING	1		00.00.0000					5	0,000	
150	4149.371.007	SPRING HOLDER	1		00.00.0000					5	0,000	
160	0750.106.078	CUP SPRING	1		00.00.0000		WTB			3	0,000	

VKF Incidence factor

OTK Optional technical kit

ID Identification (output code)

SP Supplier plant



Parts list
Page 1 from 1

Material number: 4235.065.001 6 HP 602 S NMOT /
Plant: 004.15.04-1
Material-assembly-group-no: 4149.172.009



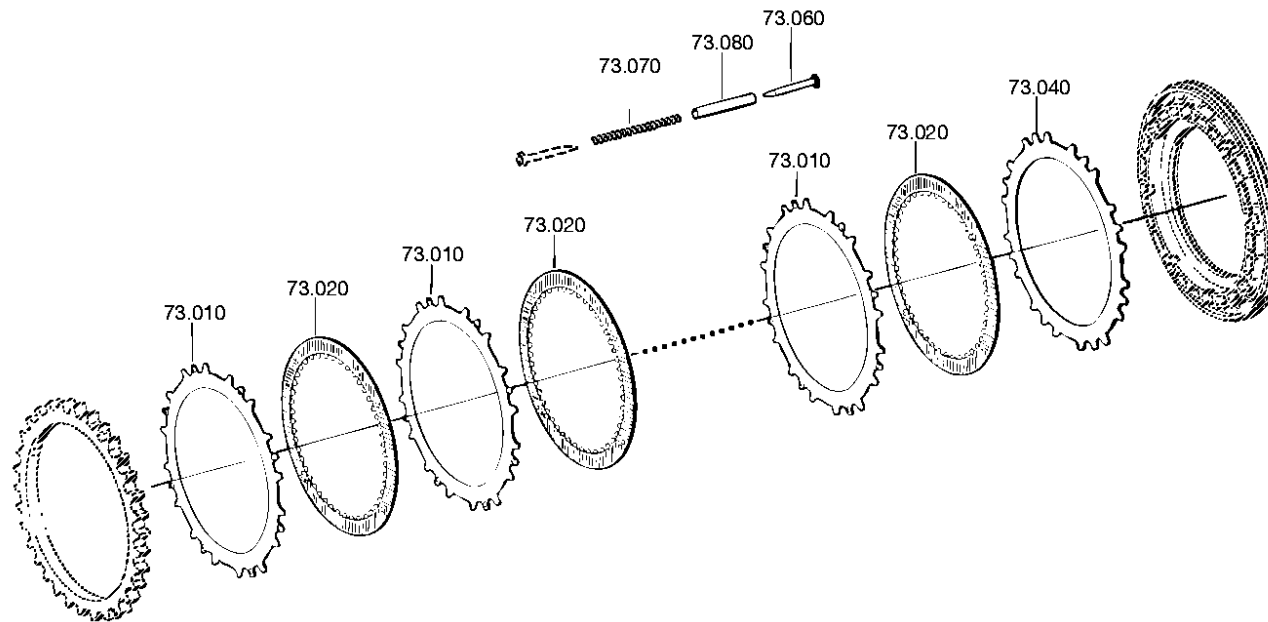
Pos.	Material number	Name	VKF	Amend. no.	Amend. start	Prod. no.	Material feature / tech. info.	OTK	External material no.	ID	Weight	SP
10	4149.371.001	PISTON	1		00.00.0000					5	0,000	
20	0734.307.137	LIP SEALING RING	1		00.00.0000		ENTHALT.IN 0734 307 196(1)			5	0,000	
30	0734.307.138	LIP SEALING RING	1		00.00.0000		ENTHALT.IN 0734 307 196(1)			5	0,000	
40	0731.201.541	PIN		8	00.00.0000		KPL. IN 0731 201 542(2)			5	0,000	
50	4139.333.766	OCLUTCH DISC	1		00.00.0000		A=3,00 IN 4139 333 760(1)			5	0,000	
70	4139.233.307	ICLUTCH DISC	7	C0100405 3D10	00.00.0000	00.00.0000	KPL.			3	0,000	
80	---	OCLUTCH DISC	6		00.00.0000		WTB*E*F*G 4139 333 760(1)-A= 2,00- 3,50(ABSTUFUNG:0,50MM)			3	0,000	
---	4139.333.766	OCLUTCH DISC	6		00.00.0000		A=3,00 IN 4139 333 760(1)			5	0,000	
---	4139.333.745	OCLUTCH DISC	6		00.00.0000		A=2,50 IN 4139 333 760(1)			5	0,000	
---	4139.333.015	OCLUTCH DISC	6		00.00.0000		A=2,00 IN 4139 333 760(1)			5	0,000	
---	4149.333.009	OCLUTCH DISC	6		00.00.0000		A=3,5 IN 4139 333 760(1)			5	0,000	
100	4139.333.535	PRESSURE RING	1		00.00.0000		ENTHALT.IN 4139 333 637(1)			5	0,000	
150	4149.371.007	SPRING HOLDER	1		00.00.0000					5	0,000	
160	0750.106.078	CUP SPRING	1		00.00.0000		WTB			3	0,000	

VKF Incidence factor

OTK Optional technical kit

ID Identification (output code)

SP Supplier plant





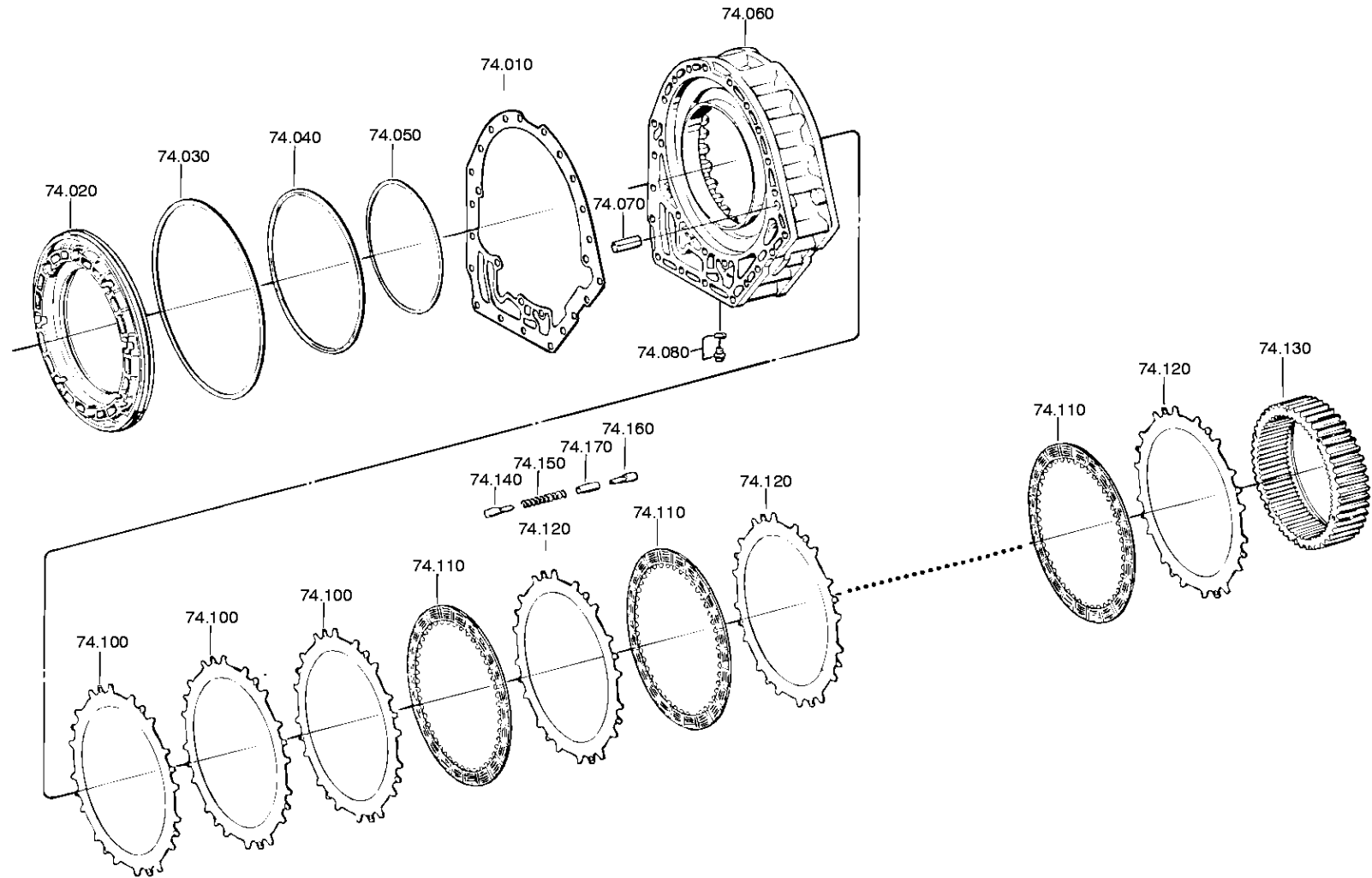
Pos.	Material number	Name	VKF	Amend. no.	Amend. start	Prod. no.	Material feature / tech. info.	OTK	External material no.	ID	Weight	SP
10	---	OCLUTCH DISC	7		00.00.0000		WTB*E*F*G 4139 333 760(1)-A= 2,00- 3,50(ABSTUFUNG:0,50MM)			3	0,000	
---	4139.333.766	OCLUTCH DISC	7		00.00.0000		A=3,00 IN 4139 333 760(1)			5	0,000	
---	4139.333.745	OCLUTCH DISC	7		00.00.0000		A=2,50 IN 4139 333 760(1)			5	0,000	
---	4139.333.015	OCLUTCH DISC	7		00.00.0000		A=2,00 IN 4139 333 760(1)			5	0,000	
---	4149.333.009	OCLUTCH DISC	7		00.00.0000		A=3,5 IN 4139 333 760(1)			5	0,000	
20	4139.233.307	ICLUTCH DISC	8	C0100405 3D10	00.00.0000	00.00.0000	KPL.			3	0,000	
40	4139.373.029	OCLUTCH DISC	1		00.00.0000					5	0,000	
60	0731.201.541	PIN	8		00.00.0000		KPL. IN 0731 201 542(2)			5	0,000	
70	0732.041.409	COMPRSPRING	8		00.00.0000					5	17	
80	0730.161.355	PIPE	8		00.00.0000		A=85,00			5	0,000	

VKF Incidence factor

OTK Optional technical kit

ID Identification (output code)

SP Supplier plant



Parts list
Page 1 from 1

Material number: 4235.065.001 6 HP 602 S NMOT /
Plant: 004.17.01-1
Material-assembly-group-no: 4139.174.001



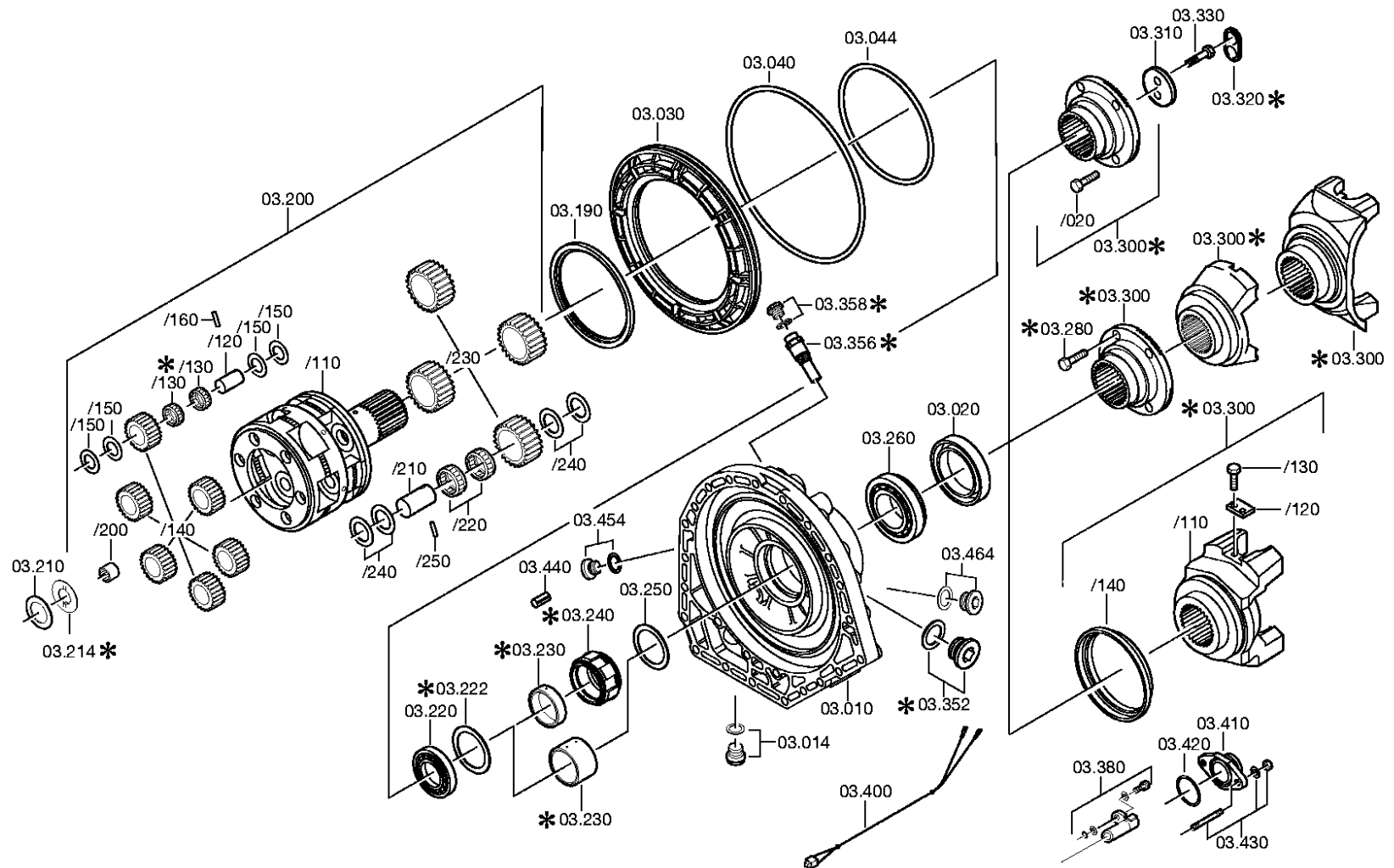
Pos.	Material number	Name	VKF	Amend. no.	Amend. start	Prod. no.	Material feature / tech. info.	OTK	External material no.	ID	Weight	SP
10	4139.301.618	GASKET	1		00.00.0000					5	0,000	
20	4139.373.025	PISTON	1		00.00.0000		A=24,0 IN 4139 373 023(0)			5	0,000	
30	0734.307.139	LIP SEALING RING	1		00.00.0000		ENTHALT.IN 0734 307 196(1)			5	0,000	
40	0634.305.087	PISTON RING	1		00.00.0000		250X260X2,2			5	0,000	
50	0634.305.066	PISTON RING	1		00.00.0000		210X220X2,2			5	0,000	
60	4139.301.531	INTERMHOUSING	1		00.00.0000		ENTHALT.IN 4139 301 475(0)			5	0,000	
70	0631.329.278	SLOTPIN	1		00.00.0000		16X40			5	0,000	
80	---	SCREW PLUG	1	C0100293 9C10	00.00.0000	00.00.0000	M10X1 * 12N.M* DICHRING			3	0,000	
---	0636.302.053	SCREW PLUG	1		00.00.0000		M10X1			5	0,100	
---	0634.801.015	SEALING RING	1		00.00.0000		10X14			5	0,001	
100	4139.333.335	OCLUTCH DISC	3		00.00.0000		A=2,00 IN 4139 374 005(1)			5	0,000	
110	4139.233.309	ICLUTCH DISC	9	C0100697 5A10	00.00.0000	00.00.0000	KPL. BREMSE G			3	0,000	
120	---	OCLUTCH DISC	9		00.00.0000		WTB*G 4139 374 005(1)-A=2,00- 2,50(ABSTUFUNG:0,50MM)			3	0,000	
---	4139.333.768	OCLUTCH DISC	9		00.00.0000		A=2,50 IN 4139 374 005(1)			5	0,000	
---	4139.333.335	OCLUTCH DISC	9		00.00.0000		A=2,00 IN 4139 374 005(1)			5	0,000	
130	4139.333.317	RING GEAR	1		00.00.0000		Z92			5	0,000	
140	4139.333.342	GUIDE PIN	8		00.00.0000		ENTHALT.IN 4139 333 340(3)			5	0,000	
150	0732.041.846	COMPRSPRING	8		00.00.0000					5	0,000	
160	4139.333.343	GUIDE PIN	8		00.00.0000		ENTHALT.IN 4139 333 847(2)			5	0,000	
170	4139.333.656	PIPE	8		00.00.0000		ENTHALT.IN 4139 333 655(2)			5	0,000	

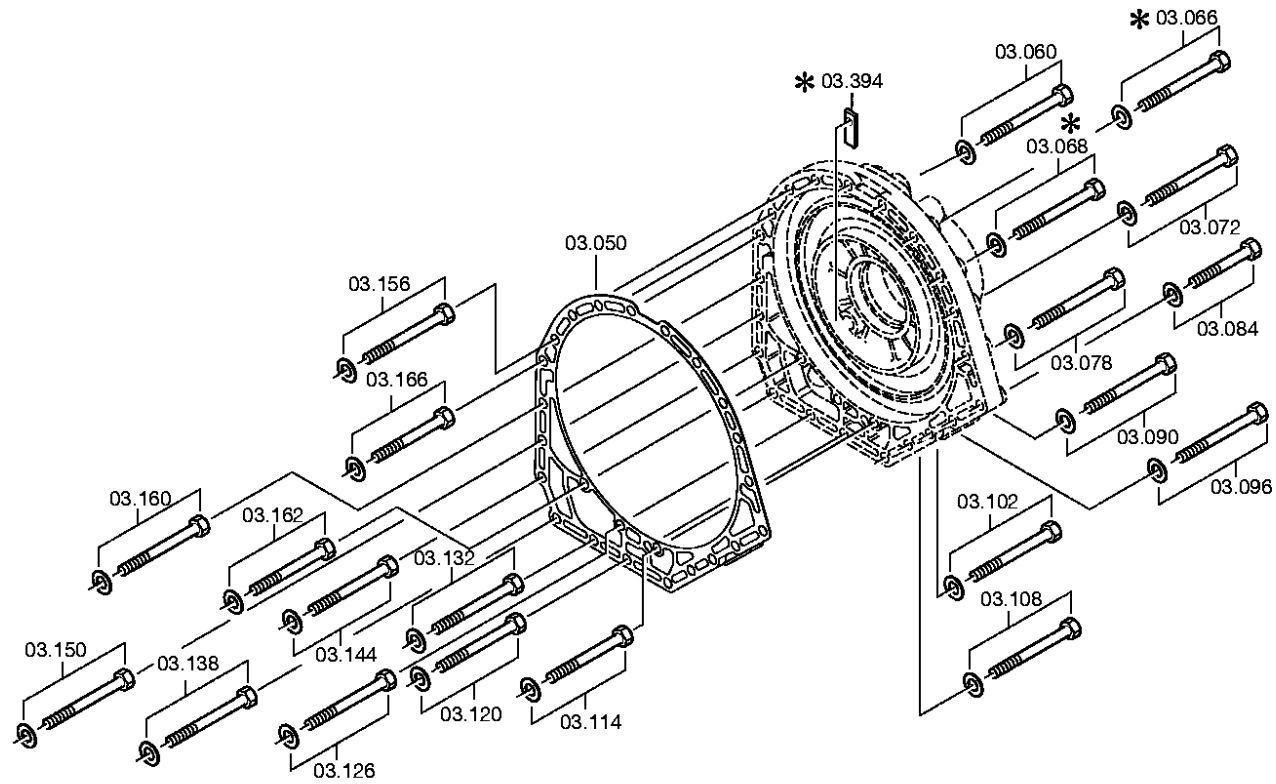
VKF Incidence factor

OTK Optional technical kit

ID Identification (output code)

SP Supplier plant







Pos.	Material number	Name	VKF	Amend. no.	Amend. start	Prod. no.	Material feature / tech. info.	OTK	External material no.	ID	Weight	SP
10	4149.203.021	OUTPUT COVER	1		00.00.0000		KPL.			3	0,000	
14	---	SCREW PLUG	1		00.00.0000		AM18X1,5* 35N.M* DICHTRING			3	0,000	
---	0636.305.067	SCREW PLUG	1		00.00.0000		M18X1,5			5	0,020	
---	0634.801.057	SEALING RING	1		00.00.0000		18X22			4	0,002	
20	---	SHAFT SEAL	1		00.00.0000		90X125X12			3	0,000	
---	0750.111.018	SHAFT SEAL	1		00.00.0000		WTB 90X125X12			3	0,080	
---	0750.199.019	GREASE	1		00.00.0000		WTB*KLASSE A ZFN13000			3	0,000	
30	4149.374.004	PISTON	1		00.00.0000		ENTHALT.IN 4149 374 001(0)			5	0,000	
40	0734.307.139	LIP SEALING RING	1		00.00.0000		ENTHALT.IN 0734 307 196(1)			5	0,000	
44	0634.305.066	PISTON RING	1		00.00.0000		210X220X2,2			5	0,000	
50	4139.301.618	GASKET	1		00.00.0000					5	0,000	
60	---	HEXAGON BOLT	4		00.00.0000		M10X155 DIN931ALT/8.8 A3C			3	0,000	
---	0636.010.577	HEXAGON BOLT	4		00.00.0000		M10X155			5	0,000	
---	0630.001.048	WASHER	4		00.00.0000					5	3,400	
66	---	HEXAGON BOLT	2		00.00.0000		M10X155 DIN931ALT/8.8 A3C			3	0,000	
---	0636.010.577	HEXAGON BOLT	2		00.00.0000		M10X155			5	0,000	
---	0630.001.048	WASHER	2		00.00.0000					5	3,400	
72	---	HEXAGON BOLT	1		00.00.0000		M10X160 DIN931ALT/8.8 A3C			3	0,000	
---	0636.010.578	HEXAGON BOLT	1		00.00.0000		M10X160			5	0,000	
---	0630.001.048	WASHER	1		00.00.0000					5	3,400	
78	---	HEXAGON BOLT	1		00.00.0000		M10X160 DIN931ALT/8.8 A3C			3	0,000	
---	0636.010.578	HEXAGON BOLT	1		00.00.0000		M10X160			5	0,000	
---	0630.001.048	WASHER	1		00.00.0000					5	3,400	
84	---	HEXAGON BOLT	1		00.00.0000		M10X155 DIN931ALT/8.8 A3C			3	0,000	
---	0636.010.577	HEXAGON BOLT	1		00.00.0000		M10X155			5	0,000	
---	0630.001.048	WASHER	1		00.00.0000					5	3,400	
90	---	HEXAGON BOLT	1		00.00.0000		M10X160 DIN931ALT/8.8 A3C			3	0,000	
---	0636.010.578	HEXAGON BOLT	1		00.00.0000		M10X160			5	0,000	
---	0630.010.026	WASHER	1		00.00.0000					5	0,000	
96	---	HEXAGON BOLT	1		00.00.0000		M10X160 DIN931ALT/8.8 A3C			3	0,000	
---	0636.010.578	HEXAGON BOLT	1		00.00.0000		M10X160			5	0,000	
---	0630.010.026	WASHER	1		00.00.0000					5	0,000	
102	---	HEXAGON BOLT	1		00.00.0000		M10X160 DIN931ALT/8.8 A3C			3	0,000	

VKF Incidence factor

OTK Optional technical kit

ID Identification (output code)

SP Supplier plant



Pos.	Material number	Name	VKF	Amend. no.	Amend. start	Prod. no.	Material feature / tech. info.	OTK	External material no.	ID	Weight	SP
---	0636.010.578	HEXAGON BOLT	1		00.00.0000		M10X160			5	0,000	
---	0630.010.026	WASHER	1		00.00.0000					5	0,000	
108	---	HEXAGON BOLT	1		00.00.0000		M10X160 DIN931ALT/8.8 A3C			3	0,000	
---	0636.010.578	HEXAGON BOLT	1		00.00.0000		M10X160			5	0,000	
---	0630.010.026	WASHER	1		00.00.0000					5	0,000	
114	---	HEXAGON BOLT	1		00.00.0000		M10X175 DIN931ALT/8.8 A3C			3	0,000	
---	0636.010.650	HEXAGON BOLT	1		00.00.0000		M10X175			5	0,000	
---	0630.001.048	WASHER	1		00.00.0000					5	3,400	
120	---	HEXAGON BOLT	1		00.00.0000		M10X155 DIN931ALT/8.8 A3C			3	0,000	
---	0636.010.577	HEXAGON BOLT	1		00.00.0000		M10X155			5	0,000	
---	0630.001.048	WASHER	1		00.00.0000					5	3,400	
126	---	HEXAGON BOLT	1		00.00.0000		M10X155 DIN931ALT/8.8 A3C			3	0,000	
---	0636.010.577	HEXAGON BOLT	1		00.00.0000		M10X155			5	0,000	
---	0630.001.048	WASHER	1		00.00.0000					5	3,400	
132	---	HEXAGON BOLT	1		00.00.0000		M10X160 DIN931ALT/8.8 A3C			3	0,000	
---	0636.010.578	HEXAGON BOLT	1		00.00.0000		M10X160			5	0,000	
---	0630.010.026	WASHER	1		00.00.0000					5	0,000	
138	---	HEXAGON BOLT	1		00.00.0000		M10X160 DIN931ALT/8.8 A3C			3	0,000	
---	0636.010.578	HEXAGON BOLT	1		00.00.0000		M10X160			5	0,000	
---	0630.010.026	WASHER	1		00.00.0000					5	0,000	
144	---	HEXAGON BOLT	1		00.00.0000		M10X160 DIN931ALT/8.8 A3C			3	0,000	
---	0636.010.578	HEXAGON BOLT	1		00.00.0000		M10X160			5	0,000	
---	0630.010.026	WASHER	1		00.00.0000					5	0,000	
150	---	HEXAGON BOLT	1		00.00.0000		M10X160 DIN931ALT/8.8 A3C			3	0,000	
---	0636.010.578	HEXAGON BOLT	1		00.00.0000		M10X160			5	0,000	
---	0630.010.026	WASHER	1		00.00.0000					5	0,000	
156	---	HEXAGON BOLT	1		00.00.0000		M10X155 DIN931ALT/8.8 A3C			3	0,000	
---	0636.010.577	HEXAGON BOLT	1		00.00.0000		M10X155			5	0,000	
---	0630.001.048	WASHER	1		00.00.0000					5	3,400	
160	---	HEXAGON BOLT	1		00.00.0000		M10X155 DIN931ALT/8.8 A3C			3	0,000	
---	0636.010.577	HEXAGON BOLT	1		00.00.0000		M10X155			5	0,000	
---	0630.001.048	WASHER	1		00.00.0000					5	3,400	
162	---	HEXAGON BOLT	1		00.00.0000		M10X175 DIN931ALT/8.8 A3C			3	0,000	
---	0636.010.650	HEXAGON BOLT	1		00.00.0000		M10X175			5	0,000	

VKF Incidence factor

OTK Optional technical kit

ID Identification (output code)

SP Supplier plant



Pos.	Material number	Name	VKF	Amend. no.	Amend. start	Prod. no.	Material feature / tech. info.	OTK	External material no.	ID	Weight	SP
---	0630.001.048	WASHER	1		00.00.0000					5	3,400	
166	---	HEXAGON BOLT	1		00.00.0000		M10X155 DIN931ALT/8.8 A3C			3	0,000	
---	0636.010.577	HEXAGON BOLT	1		00.00.0000		M10X155			5	0,000	
---	0630.001.048	WASHER	1		00.00.0000					5	3,400	
190	4149.303.015	THRUST RING	1		00.00.0000					5	0,000	
200	4139.233.235	PLANETARY DRIVE	1		00.00.0000		KPL.III*HP600*5,60			3	0,000	
/110	4139.233.228	PLANET CARRIER	1		00.00.0000		KPL.I=5,6			3	0,000	
/120	4139.333.313	BEARING PIN	6		00.00.0000		ENTHALT.IN 4139 333 592(2)			5	0,000	
/130	0735.358.167	ROLLER CAGE	6		00.00.0000		30,0X41,0X32,0 FA.INA			5	0,000	
/140	---	PLANET GEAR SET	1	C0100650 3D10	00.00.0000	00.00.0000	WTB			3	0,000	
---	4149.233.009	PLANET GEAR SET	1		00.00.0000		KPL.BOHRUNGSHONEN			3	0,000	
---	4139.233.317	PLANET GEAR SET	1		00.00.0000		KPL.			3	0,000	
/150	0730.104.081	THRUST WASHER	24		00.00.0000		A=1,00 IN 0730 104 901(2)			5	0,000	
/160	0501.315.917	SLOTPIN	6		00.00.0000					5	0,000	
/200	0735.298.284	NEEDLE SLEEVE	1		00.00.0000		55,0X63,0X20,0			5	0,077	
/210	4139.333.312	BEARING PIN	4		00.00.0000					5	0,000	
/220	0735.320.694	NEEDLE CAGE	8		00.00.0000		48,0X58,0X30,0 FA.INA			5	0,000	
/230	4139.298.926	PLANET GEAR SET	1		00.00.0000		KPL.			4	0,000	
/240	0730.103.505	THRUST WASHER	16		00.00.0000		A=1,00 IN 0730 104 901(2)			5	0,000	
/250	0501.315.917	SLOTPIN	4		00.00.0000					5	0,000	
220	---	TAROLLBEARING	1		00.00.0000		70,0X110,0X25,0			3	0,000	
---	0750.117.625	TAROLLBEARING	1		00.00.0000		WTB 70,0X110,0X25,0			3	0,840	
222	0730.009.583	WASHER	1		00.00.0000		A=3,00			5	0,000	
240	4149.303.013	TOOTHED RING	1		00.00.0000		Z6			5	0,000	
250	---	WASHER	1		00.00.0000		WTB 0730 106 665(2)-A= 0,40-1,20(ABSTUFUNG:0,10MM)			3	0,000	
---	0730.103.586	WASHER	1		00.00.0000		A=1,20 IN 0730 106 665(2)			5	0,000	
---	0730.008.869	WASHER	1	C0100362 5B10	00.00.0000	00.00.0000	A=1,15 IN 0730 106 665(2)			5	0,000	
---	0730.103.587	WASHER	1		00.00.0000		A=1,10 IN 0730 106 665(2)			5	0,000	
---	0730.106.668	WASHER	1		00.00.0000		A=1,05 IN 0730 106 665(2)			5	0,000	
---	0730.103.588	WASHER	1		00.00.0000		A=1,00 IN 0730 106 665(2)			5	0,000	
---	0730.106.667	WASHER	1		00.00.0000		A=0,95 IN 0730 106 665(2)			5	0,000	

VKF Incidence factor

OTK Optional technical kit

ID Identification (output code)

SP Supplier plant



Pos.	Material number	Name	VKF	Amend. no.	Amend. start	Prod. no.	Material feature / tech. info.	OTK	External material no.	ID	Weight	SP
---	0730.106.666	WASHER	1		00.00.0000		A=0,90 IN 0730 106 665(2)			5	0,000	
---	0730.008.868	WASHER	1	C0100362 5B10	00.00.0000	00.00.0000	A=0,85 IN 0730 106 665(2)			5	0,000	
---	0730.103.589	WASHER	1		00.00.0000		A=0,80 IN 0730 106 665(2)			5	0,000	
---	0730.103.590	WASHER	1		00.00.0000		A=0,60 IN 0730 106 665(2)			5	0,000	
---	0730.103.591	WASHER	1		00.00.0000		A=0,40 IN 0730 106 665(2)			5	0,000	
260	---	TAROLLBEARING	1		00.00.0000		70,0X125,0X26,2			3	0,000	
---	0750.117.621	TAROLLBEARING	1		00.00.0000		WTB 70,0X125,0X26,2			3	1,290	
280	---	HEXAGON BOLT	4		00.00.0000		M14X1,5X50 * SCHUTZHUELSE			3	0,000	
---	0636.020.211	HEXAGON BOLT	4		00.00.0000		M14X1,5X50			5	0,080	
300	4139.303.172	OUTPUT FLANGE	1		00.00.0000					5	0,000	
310	4139.303.239	WASHER	1		00.00.0000					5	0,000	
320	---	TAB WASHER	1		00.00.0000					3	0,000	
---	1250.304.353	TAB WASHER	1		00.00.0000		ENTHALT.IN 1313 304 043(2)			5	14	
330	---	HEXAGON BOLT	2		00.00.0000		M12X30 DIN933ALT/8.8 A3C			3	0,000	
---	0636.016.110	HEXAGON BOLT	2		00.00.0000		M12X30			5	0,030	
356	---	PULSE SENSOR	1		00.00.0000		KITAS2 * 45N.M*O. DICHRING			3	0,000	
---	0501.214.772	PULSE SENSOR	1		00.00.0000					5	0,000	
380	---	INDTRANSMITTER	1		00.00.0000		*SCHEIBE			3	0,000	
---	0501.314.432	INDTRANSMITTER	1		00.00.0000					5	0,028	
---	---	WASHER	1		00.00.0000		WTB 0730 008 416(2)-A= 0,08- 6,00(ABSTUFUNG:0,10MM)			3	0,000	
---	0730.008.442	WASHER	1		00.00.0000		A=6,00 IN 0730 008 416(2)			5	0,000	
---	0730.008.441	WASHER	1		00.00.0000		A=5,80 IN 0730 008 416(2)			5	0,000	
---	0730.008.440	WASHER	1		00.00.0000		A=5,60 IN 0730 008 416(2)			5	0,000	
---	0730.008.439	WASHER	1		00.00.0000		A=5,40 IN 0730 008 416(2)			5	0,000	
---	0730.008.438	WASHER	1		00.00.0000		A=5,20 IN 0730 008 416(2)			5	0,000	
---	0730.008.437	WASHER	1		00.00.0000		A=5,00 IN 0730 008 416(2)			5	0,000	
---	0730.008.436	WASHER	1		00.00.0000		A=4,80 IN 0730 008 416(2)			5	0,000	
---	0730.008.435	WASHER	1		00.00.0000		A=4,60 IN 0730 008 416(2)			5	0,000	
---	0730.008.434	WASHER	1		00.00.0000		A=4,40 IN 0730 008 416(2)			5	0,000	
---	0730.008.433	WASHER	1		00.00.0000		A=4,20 IN 0730 008 416(2)			5	0,000	

VKF Incidence factor

OTK Optional technical kit

ID Identification (output code)

SP Supplier plant



Pos.	Material number	Name	VKF	Amend. no.	Amend. start	Prod. no.	Material feature / tech. info.	OTK	External material no.	ID	Weight	SP
---	0730.008.432	WASHER	1		00.00.0000		A=4,00 IN 0730 008 416(2)			5	0,000	
---	0730.008.431	WASHER	1		00.00.0000		A=3,80 IN 0730 008 416(2)			5	0,000	
---	0730.008.430	WASHER	1		00.00.0000		A=3,60 IN 0730 008 416(2)			5	0,000	
---	0730.008.429	WASHER	1		00.00.0000		A=3,20 IN 0730 008 416(2)			5	0,000	
---	0730.008.428	WASHER	1		00.00.0000		A=3,00 IN 0730 008 416(2)			5	0,000	
---	0730.009.198	WASHER	1		00.00.0000		A=2,90 IN 0730 008 416(2)			5	0,000	
---	0730.008.427	WASHER	1		00.00.0000		A=2,80 IN 0730 008 416(2)			5	0,000	
---	0730.009.197	WASHER	1		00.00.0000		A=2,70 IN 0730 008 416(2)			5	0,000	
---	0730.008.426	WASHER	1		00.00.0000		A=2,60 IN 0730 008 416(2)			5	2,500	
---	0730.009.196	WASHER	1		00.00.0000		A=2,50 IN 0730 008 416(2)			5	0,002	
---	0730.008.425	WASHER	1		00.00.0000		A=2,40 IN 0730 008 416(2)			5	2,200	
---	0730.008.424	WASHER	1		00.00.0000		A=2,20 IN 0730 008 416(2)			5	2	
---	0730.009.195	WASHER	1		00.00.0000		A=2,10 IN 0730 008 416(2)			5	0,010	
---	0730.008.423	WASHER	1		00.00.0000		A=2,00 IN 0730 008 416(2)			5	2	
---	0730.009.194	WASHER	1		00.00.0000		A=1,90 IN 0730 008 416(2)			5	0,002	
---	0730.008.422	WASHER	1		00.00.0000		A=1,80 IN 0730 008 416(2)			5	1,800	
---	0730.009.193	WASHER	1		00.00.0000		A=1,70 IN 0730 008 416(2)			5	0,010	
---	0730.008.421	WASHER	1		00.00.0000		A=1,60 IN 0730 008 416(2)			5	1,500	
---	0730.009.192	WASHER	1		00.00.0000		A=1,50 IN 0730 008 416(2)			5	0,001	
---	0730.008.420	WASHER	1		00.00.0000		A=1,40 IN 0730 008 416(2)			5	0,002	
---	0730.009.191	WASHER	1		00.00.0000		A=1,30 IN 0730 008 416(2)			5	0,001	
---	0730.008.419	WASHER	1		00.00.0000		A=1,20 IN 0730 008 416(2)			5	1,200	
---	0730.008.418	WASHER	1		00.00.0000		A=1,00 IN 0730 008 416(2)			5	1	
---	0730.008.417	WASHER	1		00.00.0000		A=0,80 IN 0730 008 416(2)			5	0,000	
---	---	TORX SCREW	1	C0100794 2710	00.00.0000	00.00.0000	M6X45			3	0,000	
---	0736.101.359	TORX SCREW	1	C0100799 3210	00.00.0000	00.00.0000	M6X45 IN 0736 101 363(2)			5	0,000	
---	0634.313.016	O-RING	1		00.00.0000		4X1,5			5	0,000	
400	4149.206.119	CABLE CONNECT	1		00.00.0000		KPL.ECOMAT2*N-AB*6G*LG* RET			3	0,000	
410	4149.303.024	COVER	1		00.00.0000		INDUKTIVGEBER ABTRIEB			5	0,000	
420	0634.316.248	O-RING	1		00.00.0000		40X3			5	0,000	
430	---	HEXAGON BOLT	2		00.00.0000		M6X22 ISO4017/10.9 A2C			3	0,000	

VKF Incidence factor

OTK Optional technical kit

ID Identification (output code)

SP Supplier plant



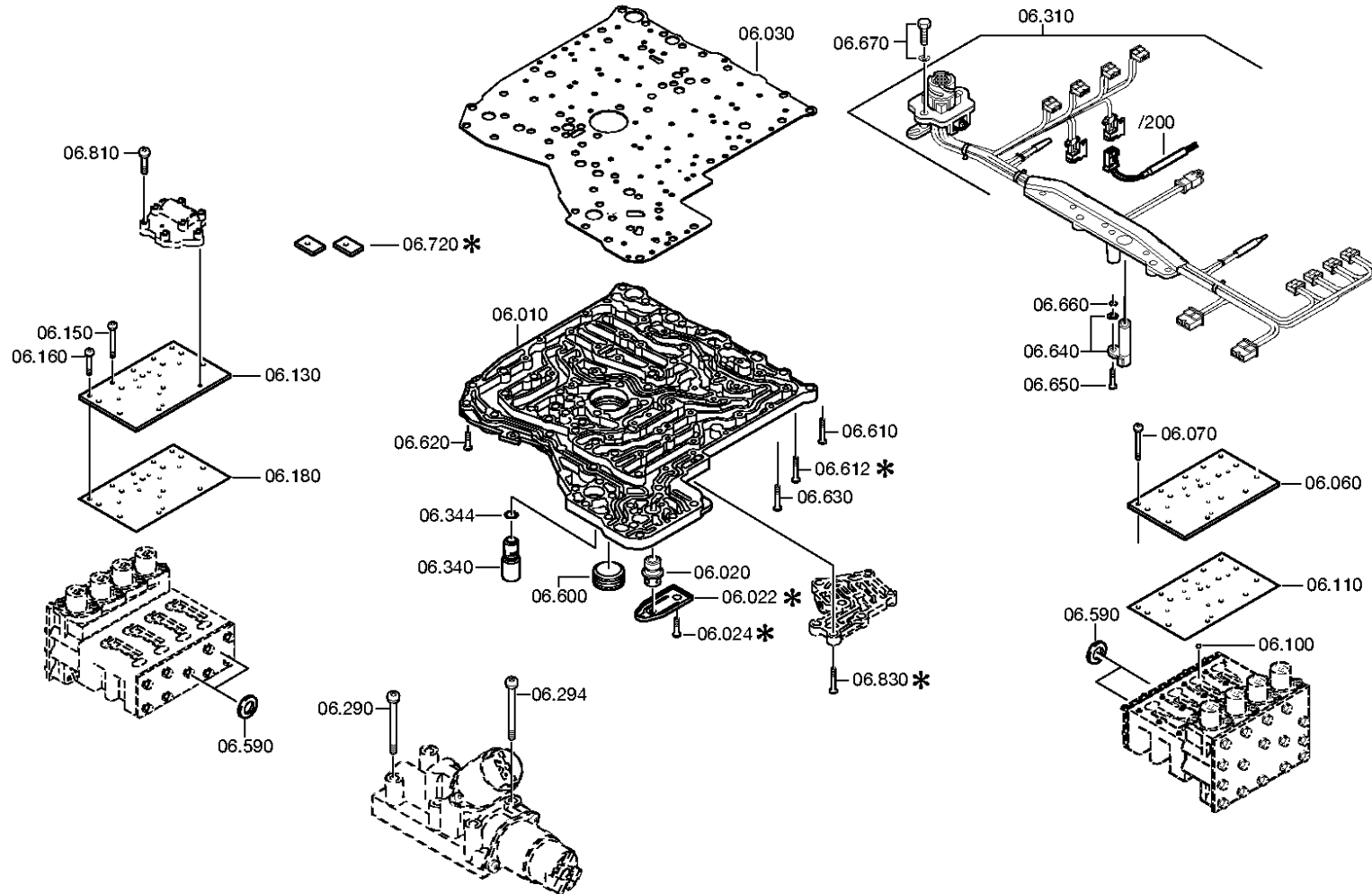
Pos.	Material number	Name	VKF	Amend. no.	Amend. start	Prod. no.	Material feature / tech. info.	OTK	External material no.	ID	Weight	SP
---	0636.015.489	HEXAGON BOLT	2		00.00.0000		M6X22			5	0,000	
---	0630.001.076	WASHER	2		00.00.0000					5	0,001	
440	4181.212.006	VALVE	1		00.00.0000		KPL. *MX295			3	0,000	
/110	4139.303.200	VALVE	1		00.00.0000					5	0,000	
/120	0635.460.014	BALL	1		00.00.0000		7			5	0,002	
/130	4139.333.827	RING	1		00.00.0000					5	0,000	
/140	0732.042.623	COMPRSPRING	1		00.00.0000					5	0,000	
/150	0501.322.983	O-RING	1		00.00.0000		8X2,0*FPMX295			5	0,000	
454	---	SCREW PLUG	1		00.00.0000		AM18X1,5* 35N.M* DICHRING			3	0,000	
---	0636.305.067	SCREW PLUG	1		00.00.0000		M18X1,5			5	0,020	
---	0634.801.057	SEALING RING	1		00.00.0000		18X22			4	0,002	
464	---	SCREW PLUG	1		00.00.0000		AM18X1,5* 35N.M* DICHRING			3	0,000	
---	0636.305.067	SCREW PLUG	1		00.00.0000		M18X1,5			5	0,020	
---	0634.801.057	SEALING RING	1		00.00.0000		18X22			4	0,002	

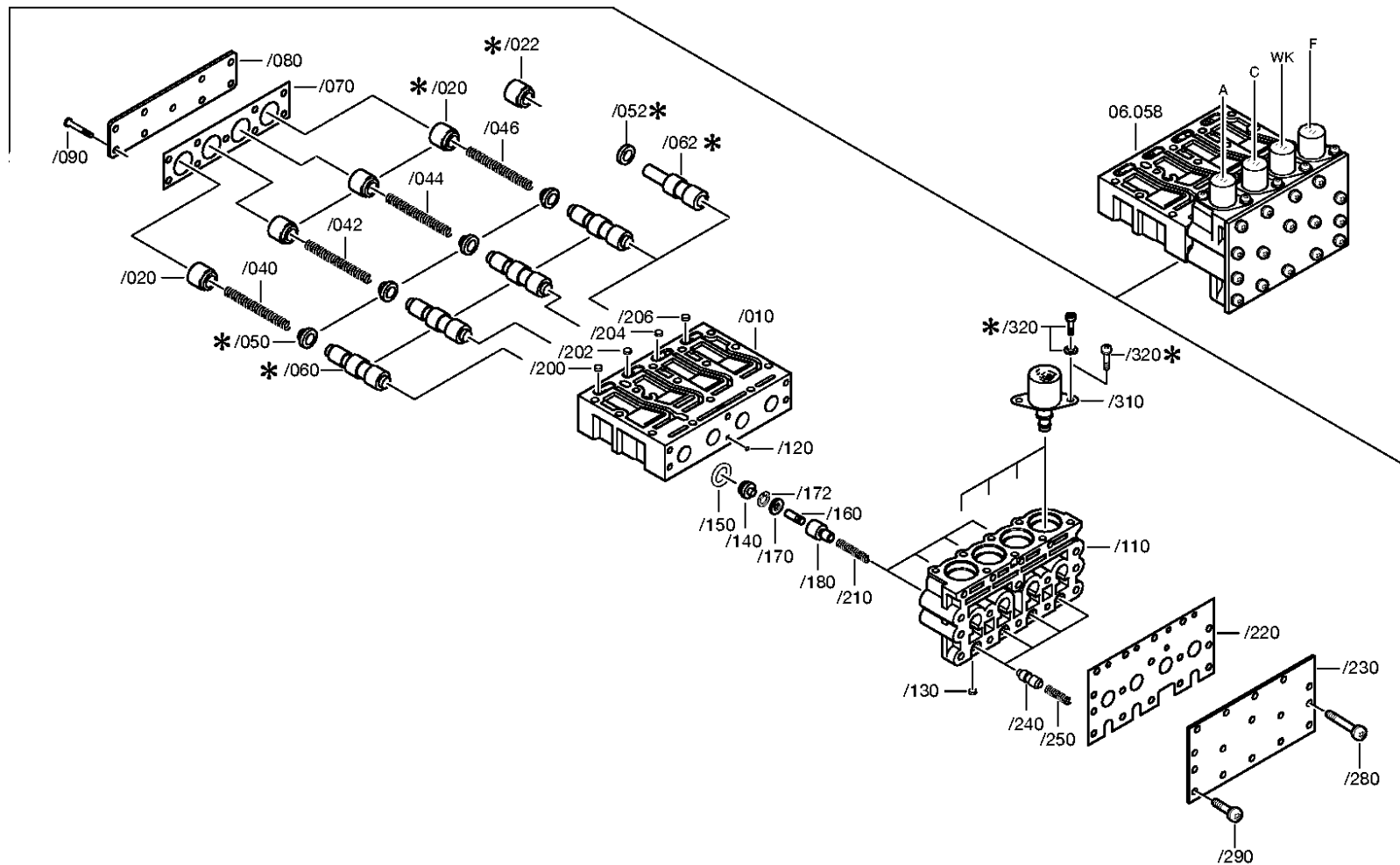
VKF Incidence factor

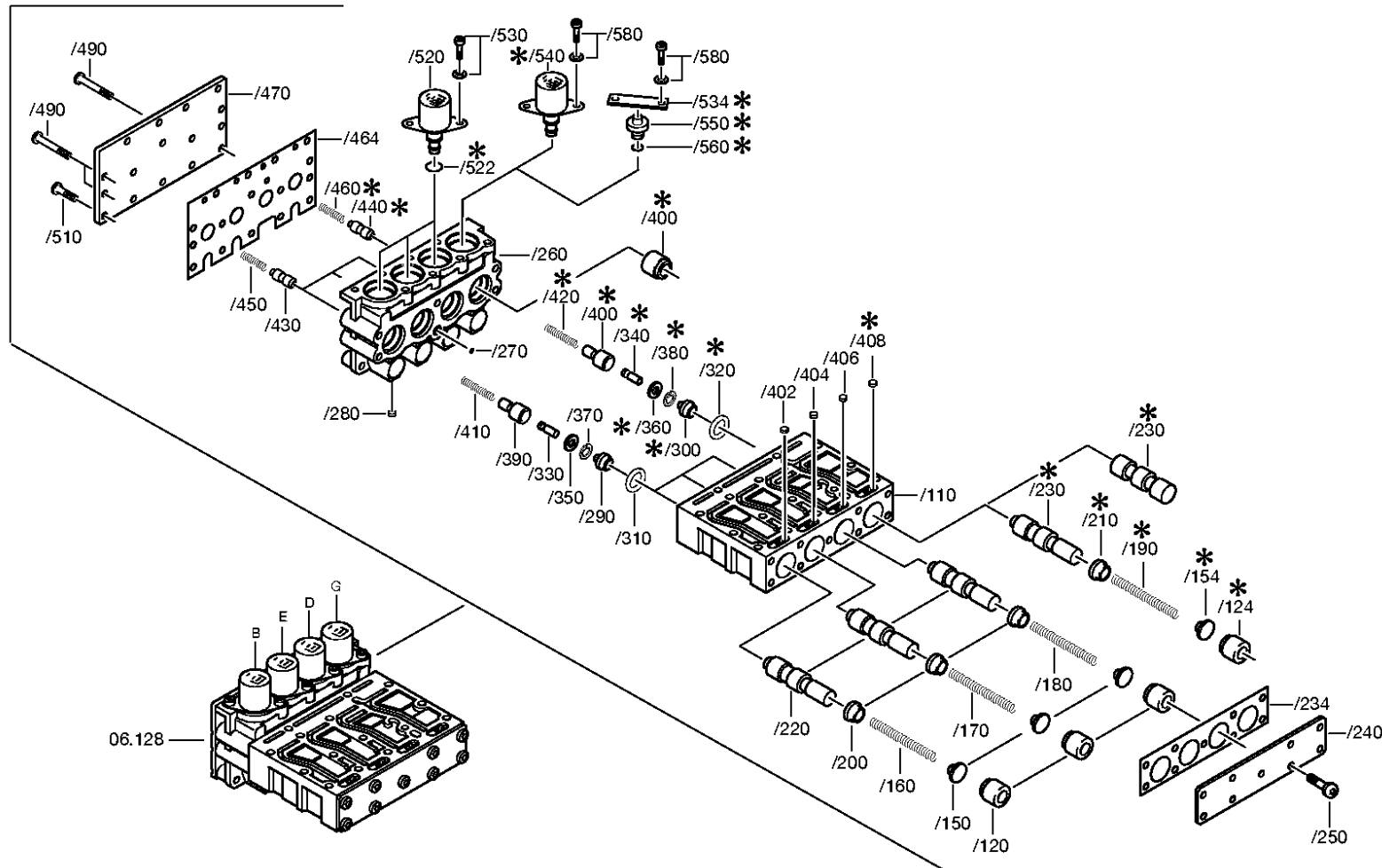
OTK Optional technical kit

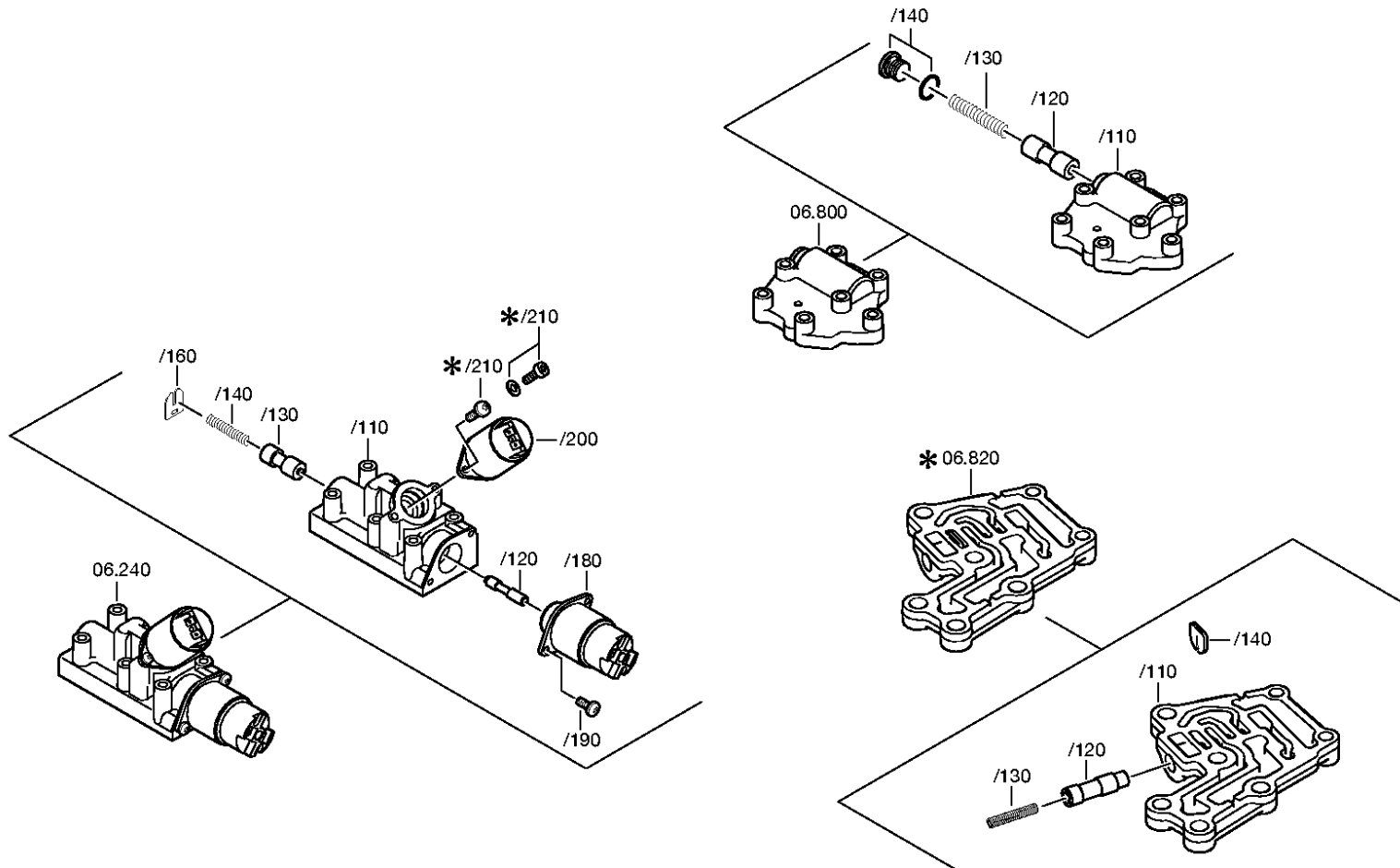
ID Identification (output code)

SP Supplier plant











Pos.	Material number	Name	VKF	Amend. no.	Amend. start	Prod. no.	Material feature / tech. info.	OTK	External material no.	ID	Weight	SP
10	4149.306.134	DUCT PLATE	1		00.00.0000		G2.1			5	0,000	
20	4149.206.086	DRAIN VALVE	1		00.00.0000		KPL.			3	0,000	
22	4149.306.138	SPRING SHEET	1		00.00.0000		WANDLERENTLEERVENTIL			5	0,000	
24	---	TORX SCREW	1		00.00.0000		M6X16 TN17985/8.8 A3C			3	0,000	
---	0736.101.358	TORX SCREW	1	C0100799 3210	00.00.0000	00.00.0000	M6X16 IN 0736 101 363(2)			5	0,000	
30	4149.306.135	INTERMPLATE	1		00.00.0000		G2.1			5	0,000	
58	4235.206.001	VALVE BLOCK	1		00.00.0000		KPL.A*C*WK*F*24V*2P			3	0,000	
/10	4149.306.237	VALVE BLOCK	1		00.00.0000					5	0,000	
/20	4149.306.153	PISTON	4		00.00.0000					5	0,000	
/40	0732.041.148	COMPRSPRING	1		00.00.0000					5	0,000	
/42	0732.041.095	COMPRSPRING	1		00.00.0000					5	0,000	
/44	0732.041.357	COMPRSPRING	1		00.00.0000					5	0,000	
/46	0732.041.720	COMPRSPRING	1		00.00.0000					5	0,000	
/50	0730.009.221	WASHER	4		00.00.0000		A=4,00 IN 0730 009 296(2)			5	0,000	
/60	4139.206.415	PISTON	4		00.00.0000		KPL.			3	0,000	
/70	4139.306.541	GASKET	1		00.00.0000					5	0,000	
/80	4139.306.001	COVER PLATE	1		00.00.0000					5	0,000	
/90	---	TORX SCREW	9		00.00.0000		M6X16 TN17985/8.8 A3C			3	0,000	
---	0736.101.358	TORX SCREW	9	C0100799 3210	00.00.0000	00.00.0000	M6X16 IN 0736 101 363(2)			5	0,000	
/110	4149.306.241	VALVE STRIP	1		00.00.0000		WBH/ECOMAT 2PLUS			5	0,000	
/120	0634.313.074	O-RING	1		00.00.0000		5X1,5			5	0,000	
/130	0635.460.004	BALL	12		00.00.0000		4			5	0,001	
/140	4139.306.219	BUSH	4		00.00.0000		ENTHALT.IN 4139 306 218(2)			5	0,000	
/150	0634.316.217	O-RING	4		00.00.0000		24X3			5	1,100	
/160	4139.306.217	PIN	4		00.00.0000					5	0,000	
/170	0730.002.769	WASHER	4		00.00.0000					5	0,000	
/172	0630.502.007	RETAINING RING	4		00.00.0000		20X1			5	0,001	
/180	4139.306.085	PISTON	4		00.00.0000					5	0,000	
/200	0730.361.070	ORIFICE	1		00.00.0000		D=0,8 IN 0730 361 120(2)			5	0,001	
/202	0730.361.078	ORIFICE	1		00.00.0000		D=0,7 IN 0730 361 120(2)			5	0,000	
/204	0730.361.070	ORIFICE	1		00.00.0000		D=0,8 IN 0730 361 120(2)			5	0,001	
/206	0730.361.078	ORIFICE	1		00.00.0000		D=0,7 IN 0730 361 120(2)			5	0,000	

VKF Incidence factor

OTK Optional technical kit

ID Identification (output code)

SP Supplier plant



Pos.	Material number	Name	VKF	Amend. no.	Amend. start	Prod. no.	Material feature / tech. info.	OTK	External material no.	ID	Weight	SP
/210	0732.041.374	COMPRSPRING	4		00.00.0000					5	0,000	
/220	4139.306.545	GASKET	1		00.00.0000					5	0,000	
/230	4139.306.125	COVER PLATE	1		00.00.0000					5	0,000	
/240	4149.306.068	PISTON	4		00.00.0000					5	0,000	
/250	0732.041.373	COMPRSPRING	4		00.00.0000					5	0,000	
/280	---	TORX SCREW	5		00.00.0000		M6X65 TN17985/8.8 A3C			3	0,000	
---	0736.101.360	TORX SCREW	5	C0100799 3210	00.00.0000	00.00.0000	M6X65 IN 0736 101 363(2)			5	0,000	
/290	---	TORX SCREW	11		00.00.0000		M6X16 TN17985/8.8 A3C			3	0,000	
---	0736.101.358	TORX SCREW	11	C0100799 3210	00.00.0000	00.00.0000	M6X16 IN 0736 101 363(2)			5	0,000	
/310	0501.319.200	SOLENOID VALVE	4		00.00.0000		24V 2POL			5	280	
/320	---	CAP SCREW	8		00.00.0000		M5X12 ISO4762/8.8 A3C			3	0,000	
---	0636.101.651	CAP SCREW	8		00.00.0000		M5X12			5	0,003	
---	0630.001.096	WASHER	8		00.00.0000					5	0,001	
60	4139.306.179	COVER PLATE	1		00.00.0000		ENTHALT.IN 4139 306 177(1)			5	0,000	
70	---	TORX SCREW	15		00.00.0000		M6X65 TN17985/8.8 A3C			3	0,000	
---	0736.101.360	TORX SCREW	15	C0100799 3210	00.00.0000	00.00.0000	M6X65 IN 0736 101 363(2)			5	0,000	
100	0635.460.077	BALL	1		00.00.0000		5			5	0,000	
110	4139.306.667	GASKET	1		00.00.0000					5	0,000	
128	4235.206.002	VALVE BLOCK	1		00.00.0000		KPL.B*E*D*G*24V*2P			3	0,000	
/110	4149.306.239	VALVE BLOCK	1		00.00.0000					5	0,000	
/120	4149.306.153	PISTON	3		00.00.0000					5	0,000	
/124	4149.306.153	PISTON	1		00.00.0000					5	0,000	
/150	4139.306.654	STOP	3		00.00.0000					5	0,000	
/160	0732.041.148	COMPRSPRING	1		00.00.0000					5	0,000	
/170	0732.041.095	COMPRSPRING	1		00.00.0000					5	0,000	
/180	0732.041.095	COMPRSPRING	1		00.00.0000					5	0,000	
/190	0732.041.148	COMPRSPRING	1		00.00.0000					5	0,000	
/200	0730.009.221	WASHER	3		00.00.0000		A=4,00 IN 0730 009 296(2)			5	0,000	
/210	0730.009.221	WASHER	1		00.00.0000		A=4,00 IN 0730 009 296(2)			5	0,000	
/220	4139.206.415	PISTON	3		00.00.0000		KPL.			3	0,000	
/230	4139.206.415	PISTON	1		00.00.0000		KPL.			3	0,000	

VKF Incidence factor

OTK Optional technical kit

ID Identification (output code)

SP Supplier plant



Pos.	Material number	Name	VKF	Amend. no.	Amend. start	Prod. no.	Material feature / tech. info.	OTK	External material no.	ID	Weight	SP
/234	4139.306.541	GASKET	1		00.00.0000					5	0,000	
/240	4139.306.001	COVER PLATE	1		00.00.0000					5	0,000	
/250	---	TORX SCREW	9		00.00.0000		M6X16 TN17985/8.8 A3C			3	0,000	
---	0736.101.358	TORX SCREW	9	C0100799 3210	00.00.0000	00.00.0000	M6X16 IN 0736 101 363(2)			5	0,000	
/260	4149.306.241	VALVE STRIP	1		00.00.0000		WBH/ECOMAT 2PLUS			5	0,000	
/270	0634.313.074	O-RING	1		00.00.0000		5X1,5			5	0,000	
/280	0635.460.004	BALL	12		00.00.0000		4			5	0,001	
/290	4139.306.219	BUSH	3		00.00.0000		ENTHALT.IN 4139 306 218(2)			5	0,000	
/300	4139.306.219	BUSH	1		00.00.0000		ENTHALT.IN 4139 306 218(2)			5	0,000	
/310	0634.316.217	O-RING	3		00.00.0000		24X3			5	1,100	
/320	0634.316.217	O-RING	1		00.00.0000		24X3			5	1,100	
/330	4139.306.217	PIN	3		00.00.0000					5	0,000	
/340	4139.306.217	PIN	1		00.00.0000					5	0,000	
/350	0730.002.769	WASHER	3		00.00.0000					5	0,000	
/360	0730.002.769	WASHER	1		00.00.0000					5	0,000	
/370	0630.502.007	RETAINING RING	3		00.00.0000		20X1			5	0,001	
/380	0630.502.007	RETAINING RING	1		00.00.0000		20X1			5	0,001	
/390	4139.306.085	PISTON	3		00.00.0000					5	0,000	
/400	4139.306.085	PISTON	1		00.00.0000					5	0,000	
/402	0730.361.070	ORIFICE	1		00.00.0000		D=0,8 IN 0730 361 120(2)			5	0,001	
/404	0730.361.070	ORIFICE	1		00.00.0000		D=0,8 IN 0730 361 120(2)			5	0,001	
/406	0730.361.070	ORIFICE	1		00.00.0000		D=0,8 IN 0730 361 120(2)			5	0,001	
/408	0730.361.070	ORIFICE	1		00.00.0000		D=0,8 IN 0730 361 120(2)			5	0,001	
/410	0732.041.374	COMPRSPRING	3		00.00.0000					5	0,000	
/420	0732.041.374	COMPRSPRING	1		00.00.0000					5	0,000	
/430	4149.306.068	PISTON	3		00.00.0000					5	0,000	
/440	4149.306.068	PISTON	1		00.00.0000					5	0,000	
/450	0732.041.373	COMPRSPRING	3		00.00.0000					5	0,000	
/460	0732.041.373	COMPRSPRING	1		00.00.0000					5	0,000	
/464	4139.306.545	GASKET	1		00.00.0000					5	0,000	
/470	4139.306.125	COVER PLATE	1		00.00.0000					5	0,000	
/490	---	TORX SCREW	5		00.00.0000		M6X65 TN17985/8.8 A3C			3	0,000	

VKF Incidence factor

OTK Optional technical kit

ID Identification (output code)

SP Supplier plant



Pos.	Material number	Name	VKF	Amend. no.	Amend. start	Prod. no.	Material feature / tech. info.	OTK	External material no.	ID	Weight	SP
---	0736.101.360	TORX SCREW	5	C0100799 3210	00.00.0000	00.00.0000	M6X65 IN 0736 101 363(2)			5	0,000	
/510	---	TORX SCREW	11		00.00.0000		M6X16 TN17985/8.8 A3C			3	0,000	
---	0736.101.358	TORX SCREW	11	C0100799 3210	00.00.0000	00.00.0000	M6X16 IN 0736 101 363(2)			5	0,000	
/520	0501.319.200	SOLENOID VALVE	3		00.00.0000		24V 2POL			5	280	
/530	---	CAP SCREW	6		00.00.0000		M5X12 ISO4762/8.8 A3C			3	0,000	
---	0636.101.651	CAP SCREW	6		00.00.0000		M5X12			5	0,003	
---	0630.001.096	WASHER	6		00.00.0000					5	0,001	
/540	0501.319.200	SOLENOID VALVE	1		00.00.0000		24V 2POL			5	280	
/580	---	CAP SCREW	2		00.00.0000		M5X12 ISO4762/8.8 A3C			3	0,000	
---	0636.101.651	CAP SCREW	2		00.00.0000		M5X12			5	0,003	
---	0630.001.096	WASHER	2		00.00.0000					5	0,001	
130	4149.306.012	COVER PLATE	1		00.00.0000					5	0,000	
150	---	TORX SCREW	7		00.00.0000		M6X65 TN17985/8.8 A3C			3	0,000	
---	0736.101.360	TORX SCREW	7	C0100799 3210	00.00.0000	00.00.0000	M6X65 IN 0736 101 363(2)			5	0,000	
160	---	TORX SCREW	1		00.00.0000		M6X80 TN17985/8.8 A3C			3	0,000	
---	0736.101.361	TORX SCREW	1	C0100799 3210	00.00.0000	00.00.0000	M6X80 IN 0736 101 363(2)			5	0,000	
180	4149.306.114	GASKET	1		00.00.0000		G2-1			5	0,000	
240	4149.206.088	THROTTLE VALVE	1		00.00.0000		KPL.			3	0,000	
/110	4149.306.129	VALVE BLOCK	1		00.00.0000		G2.1-D1/D8			5	0,000	
/120	4149.306.133	PISTON	1		00.00.0000		ENTHALT.IN 4149 306 132(1)			5	0,000	
/130	4139.306.677	PISTON	1		00.00.0000					5	0,000	
/140	0732.042.923	COMPRSPRING	1	C0100391 5D10	00.00.0000	00.00.0000	LINKSGEWICKELT			5	0,000	
/160	4149.306.131	FIXING PLATE	1		00.00.0000		G2.1			5	0,000	
/180	0501.316.656	MAGNET	1	C0100528 9B10	00.00.0000	00.00.0000	D1-VENTIL			5	0,000	
/190	---	TORX SCREW	2		00.00.0000		M5X12			3	0,000	
---	0736.101.362	TORX SCREW	2		00.00.0000		M5X12			5	0,000	
/200	0501.319.200	SOLENOID VALVE	1	C0100190 9C10	00.00.0000	00.00.0000	24V 2POL			5	280	

VKF Incidence factor

OTK Optional technical kit

ID Identification (output code)

SP Supplier plant



Pos.	Material number	Name	VKF	Amend. no.	Amend. start	Prod. no.	Material feature / tech. info.	OTK	External material no.	ID	Weight	SP
/210	---	CAP SCREW	2	C0100160 0C10	00.00.0000	00.00.0000	M5X12 ISO4762/8.8 A3C			3	0,000	
---	0636.101.651	CAP SCREW	2		00.00.0000		M5X12			5	0,003	
---	0630.001.096	WASHER	2		00.00.0000					5	0,001	
290	---	TORX SCREW	5	C0100536 3F10	00.00.0000	00.00.0000	M6X58 TN17985/8.8 A3C			3	0,000	
---	0736.101.557	TORX SCREW	5		00.00.0000		M6X58			5	0,000	
294	---	TORX SCREW	1		00.00.0000		M6X80 TN17985/8.8 A3C			3	0,000	
---	0736.101.361	TORX SCREW	1	C0100799 3210	00.00.0000	00.00.0000	M6X80 IN 0736 101 363(2)			5	0,000	
310	4149.206.070	WIRING HARNESS	1		00.00.0000		KPL.ECOMAT 2*5/6SG* NMOT *2-NTC			3	0,000	
/200	4149.206.107	TEMPERATURE SENSOR	1		00.00.0000		KPL.L1=155MM*2-NTC/SLK- ST.			3	0,000	
340	4139.206.545	CONVERTER VALVE	1		00.00.0000		KPL.			3	0,000	
344	0630.513.205	SNAP RING	1		00.00.0000					5	0,000	
590	4139.306.673	MAGNET	4		00.00.0000					5	0,000	
600	---	SCREW PLUG	1		00.00.0000		M42X2 *100N.M*O. DICHTRG.			3	0,000	
---	0636.301.069	SCREW PLUG	1	C0100117 4C10	00.00.0000	00.00.0000	M42X2			5	0,000	
610	---	TORX SCREW	24		00.00.0000		M8X43			3	0,000	
---	0736.617.075	TORX SCREW	24		00.00.0000		M8X43 IN 0736 617 056(2)			5	0,000	
620	---	TORX SCREW	9		00.00.0000		M8X35			3	0,000	
---	0736.617.066	TORX SCREW	9		00.00.0000		M8X35 IN 0736 617 056(2)			5	0,000	
630	---	TORX SCREW	6		00.00.0000		M8X43			3	0,000	
---	0736.617.075	TORX SCREW	6		00.00.0000		M8X43 IN 0736 617 056(2)			5	0,000	
640	---	INDTRANSMITTER	1		00.00.0000		*SCHEIBE			3	0,000	
---	0501.314.432	INDTRANSMITTER	1		00.00.0000					5	0,028	
---	---	WASHER	1		00.00.0000		WTB 0730 008 416(2)-A= 0,08- 6,00(ABSTUFUNG:0,10MM)			3	0,000	
---	0730.008.442	WASHER	1		00.00.0000		A=6,00 IN 0730 008 416(2)			5	0,000	
---	0730.008.441	WASHER	1		00.00.0000		A=5,80 IN 0730 008 416(2)			5	0,000	
---	0730.008.440	WASHER	1		00.00.0000		A=5,60 IN 0730 008 416(2)			5	0,000	

VKF Incidence factor

OTK Optional technical kit

ID Identification (output code)

SP Supplier plant



Pos.	Material number	Name	VKF	Amend. no.	Amend. start	Prod. no.	Material feature / tech. info.	OTK	External material no.	ID	Weight	SP
---	0730.008.439	WASHER	1		00.00.0000		A=5,40 IN 0730 008 416(2)			5	0,000	
---	0730.008.438	WASHER	1		00.00.0000		A=5,20 IN 0730 008 416(2)			5	0,000	
---	0730.008.437	WASHER	1		00.00.0000		A=5,00 IN 0730 008 416(2)			5	0,000	
---	0730.008.436	WASHER	1		00.00.0000		A=4,80 IN 0730 008 416(2)			5	0,000	
---	0730.008.435	WASHER	1		00.00.0000		A=4,60 IN 0730 008 416(2)			5	0,000	
---	0730.008.434	WASHER	1		00.00.0000		A=4,40 IN 0730 008 416(2)			5	0,000	
---	0730.008.433	WASHER	1		00.00.0000		A=4,20 IN 0730 008 416(2)			5	0,000	
---	0730.008.432	WASHER	1		00.00.0000		A=4,00 IN 0730 008 416(2)			5	0,000	
---	0730.008.431	WASHER	1		00.00.0000		A=3,80 IN 0730 008 416(2)			5	0,000	
---	0730.008.430	WASHER	1		00.00.0000		A=3,60 IN 0730 008 416(2)			5	0,000	
---	0730.008.429	WASHER	1		00.00.0000		A=3,20 IN 0730 008 416(2)			5	0,000	
---	0730.008.428	WASHER	1		00.00.0000		A=3,00 IN 0730 008 416(2)			5	0,000	
---	0730.009.198	WASHER	1		00.00.0000		A=2,90 IN 0730 008 416(2)			5	0,000	
---	0730.008.427	WASHER	1		00.00.0000		A=2,80 IN 0730 008 416(2)			5	0,000	
---	0730.009.197	WASHER	1		00.00.0000		A=2,70 IN 0730 008 416(2)			5	0,000	
---	0730.008.426	WASHER	1		00.00.0000		A=2,60 IN 0730 008 416(2)			5	2,500	
---	0730.009.196	WASHER	1		00.00.0000		A=2,50 IN 0730 008 416(2)			5	0,002	
---	0730.008.425	WASHER	1		00.00.0000		A=2,40 IN 0730 008 416(2)			5	2,200	
---	0730.008.424	WASHER	1		00.00.0000		A=2,20 IN 0730 008 416(2)			5	2	
---	0730.009.195	WASHER	1		00.00.0000		A=2,10 IN 0730 008 416(2)			5	0,010	
---	0730.008.423	WASHER	1		00.00.0000		A=2,00 IN 0730 008 416(2)			5	2	
---	0730.009.194	WASHER	1		00.00.0000		A=1,90 IN 0730 008 416(2)			5	0,002	
---	0730.008.422	WASHER	1		00.00.0000		A=1,80 IN 0730 008 416(2)			5	1,800	
---	0730.009.193	WASHER	1		00.00.0000		A=1,70 IN 0730 008 416(2)			5	0,010	
---	0730.008.421	WASHER	1		00.00.0000		A=1,60 IN 0730 008 416(2)			5	1,500	
---	0730.009.192	WASHER	1		00.00.0000		A=1,50 IN 0730 008 416(2)			5	0,001	
---	0730.008.420	WASHER	1		00.00.0000		A=1,40 IN 0730 008 416(2)			5	0,002	
---	0730.009.191	WASHER	1		00.00.0000		A=1,30 IN 0730 008 416(2)			5	0,001	
---	0730.008.419	WASHER	1		00.00.0000		A=1,20 IN 0730 008 416(2)			5	1,200	
---	0730.008.418	WASHER	1		00.00.0000		A=1,00 IN 0730 008 416(2)			5	1	
---	0730.008.417	WASHER	1		00.00.0000		A=0,80 IN 0730 008 416(2)			5	0,000	
650	---	TORX SCREW	1	C0100364 2A10	00.00.0000	00.00.0000	M6X45			3	0,000	

VKF Incidence factor

OTK Optional technical kit

ID Identification (output code)

SP Supplier plant



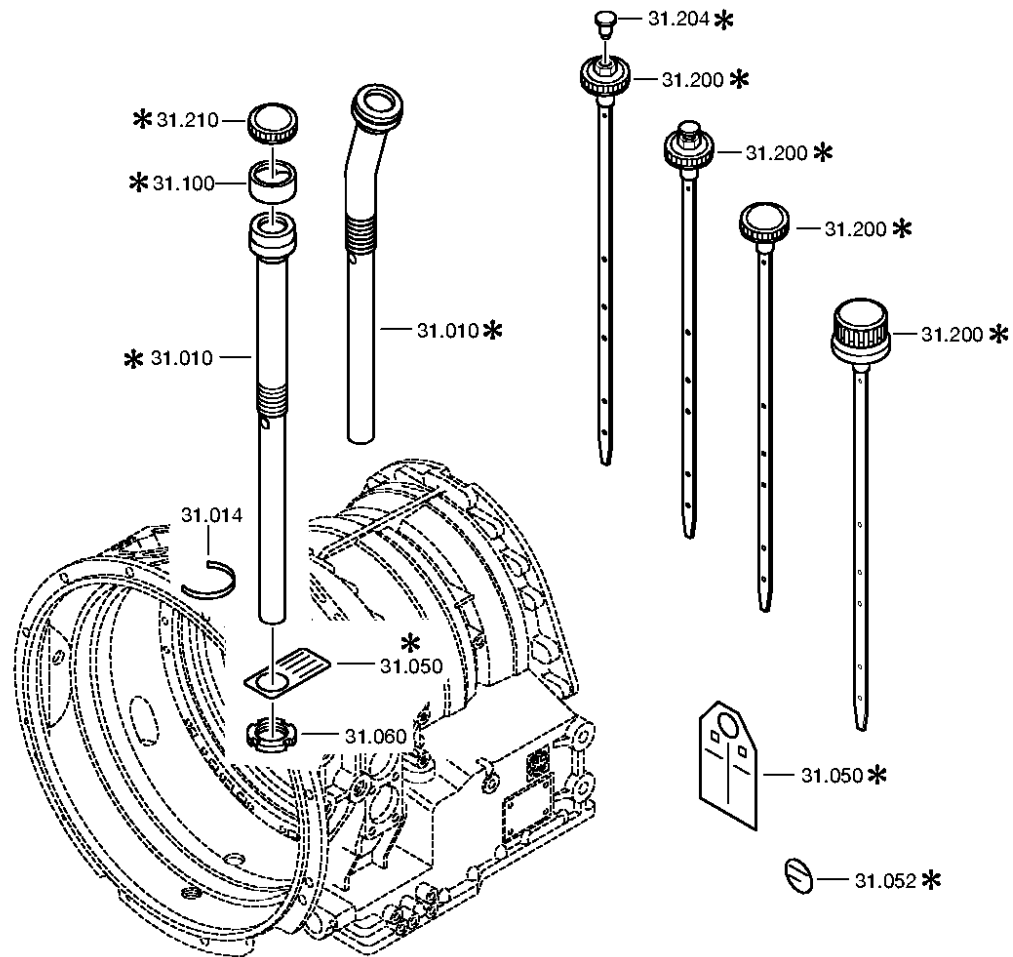
Pos.	Material number	Name	VKF	Amend. no.	Amend. start	Prod. no.	Material feature / tech. info.	OTK	External material no.	ID	Weight	SP
---	0736.101.359	TORX SCREW	1	C0100799 3210	00.00.0000	00.00.0000	M6X45 IN 0736 101 363(2)			5	0,000	
660	0634.313.016	O-RING	1		00.00.0000		4X1,5			5	0,000	
670	---	HEXAGON BOLT	2		00.00.0000		M8X28 ISO4017/8.8 A3C			3	0,000	
---	0636.015.411	HEXAGON BOLT	2		00.00.0000		M8X28			5	0,000	
---	0630.001.075	WASHER	2		00.00.0000					5	0,002	
700	---	TORX SCREW	1		00.00.0000		M6X16 TN17985/8.8 A3C			3	0,000	
---	0736.101.358	TORX SCREW	1	C0100799 3210	00.00.0000	00.00.0000	M6X16 IN 0736 101 363(2)			5	0,000	
800	4149.206.034	VALVE BLOCK	1		00.00.0000		KPL.F2			3	0,000	
/110	4149.306.051	VALVE HOUSING	1		00.00.0000		F2 UMSCHALTVENTIL/ECO2			5	0,000	
/120	4139.306.677	PISTON	1		00.00.0000					5	0,000	
/130	0732.042.923	COMPRSPRING	1	C0100337 8D10	00.00.0000	00.00.0000	LINKSGEWICKELT			5	0,000	
/140	---	SCREW PLUG	1		00.00.0000		M16X1,5 * 40N.M* DICHRING			3	0,000	
---	0636.302.065	SCREW PLUG	1		00.00.0000		M16X1,5			5	15	
---	0634.801.045	SEALING RING	1		00.00.0000		16X20			5	0,010	
810	---	TORX SCREW	7		00.00.0000		M6X80 TN17985/8.8 A3C			3	0,000	
---	0736.101.361	TORX SCREW	7	C0100799 3210	00.00.0000	00.00.0000	M6X80 IN 0736 101 363(2)			5	0,000	

VKF Incidence factor

OTK Optional technical kit

ID Identification (output code)

SP Supplier plant





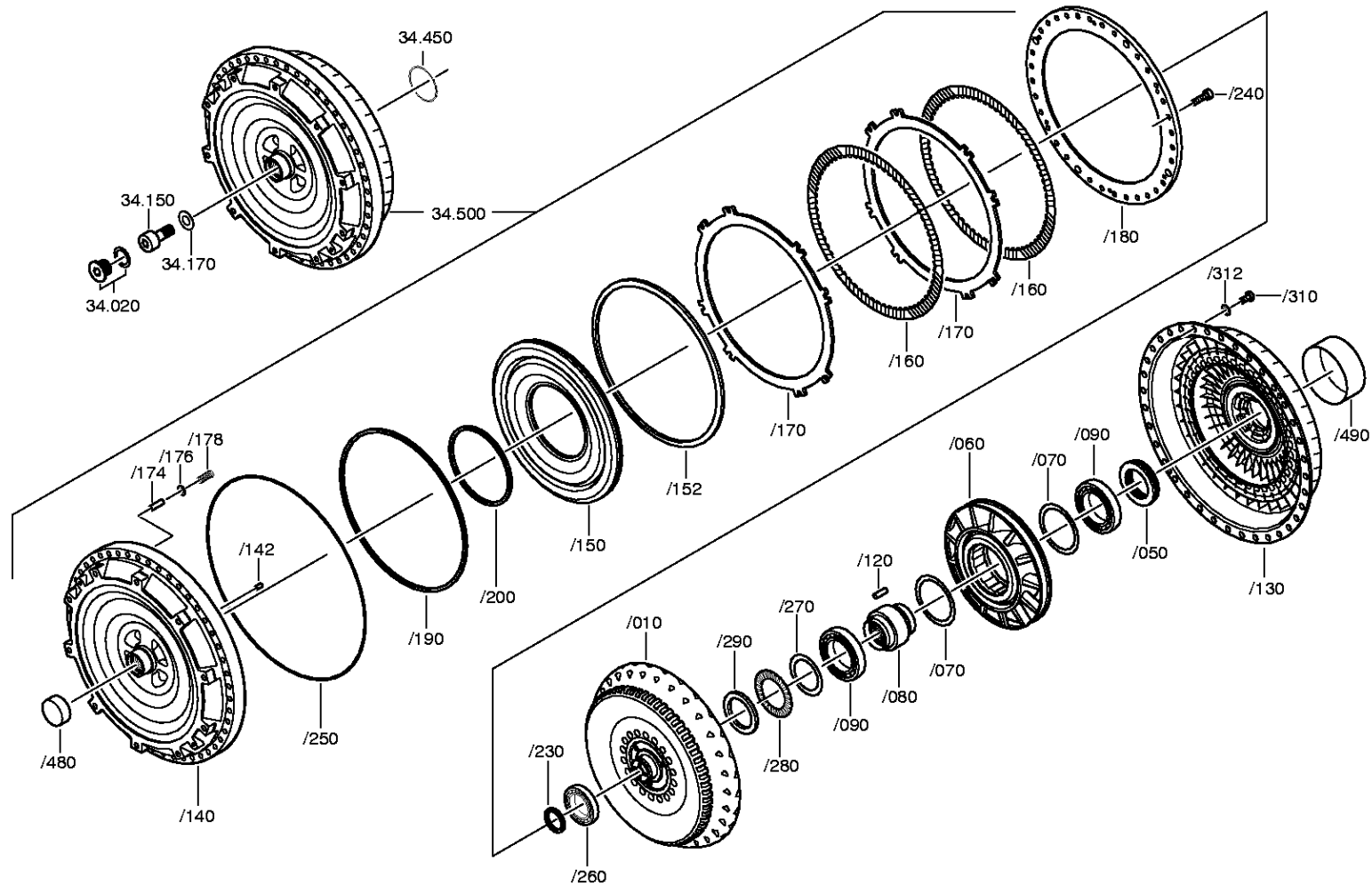
Pos.	Material number	Name	VKF	Amend. no.	Amend. start	Prod. no.	Material feature / tech. info.	OTK	External material no.	ID	Weight	SP
10	4139.231.030	FILLER TUBE	1		00.00.0000		KPL. IN 4139 231 033(2)			3	0,000	
14	0634.307.728	SEALING TAPE	300		00.00.0000					5	0,000	
50	0501.309.993	TAG	1		00.00.0000					5	0,000	
60	---	SLOTTED NUT	1		00.00.0000		M30X1,5KM6 DIN981 A3C			3	0,000	
---	0637.513.003	SLOTTED NUT	1		00.00.0000		M30X1,5			5	0,000	
200	0501.214.851	OIL DIPSTICK	1	C0100131 3E10	00.00.0000	00.00.0000	KPL. *HUNGER 1780-01-00			5	0,000	
500	4149.231.012	OIL SUMP	1	C0100948 8B10	00.00.0000	00.00.0000	KPL.			3	0,000	
510	4139.301.579	GASKET	1		00.00.0000					5	0,000	
520	---	HEXAGON BOLT	25		00.00.0000		M8X60 ISO4014/8.8 A3C			3	0,000	
---	0636.010.375	HEXAGON BOLT	25		00.00.0000		M8X60			5	0,000	
---	0630.001.075	WASHER	25		00.00.0000					5	0,002	
530	---	HEXAGON BOLT	10		00.00.0000		M8X80 ISO4014/8.8 A3C			3	0,000	
---	0636.010.548	HEXAGON BOLT	10		00.00.0000		M8X80			5	35	
---	0630.001.075	WASHER	10		00.00.0000					5	0,002	
540	---	HEXAGON BOLT	2		00.00.0000		M8X60 ISO4014/8.8 A3C			3	0,000	
---	0636.010.375	HEXAGON BOLT	2		00.00.0000		M8X60			5	0,000	
---	0634.803.003	SEALING RING	2		00.00.0000		8X15X1			5	0,000	
550	---	SCREW PLUG	1		00.00.0000		M22X1,5 * 50N.M* DICHTRING			3	0,000	
---	0636.302.045	SCREW PLUG	1		00.00.0000		M22X1,5			5	0,040	
---	0634.801.074	SEALING RING	1		00.00.0000		22X27			5	2,100	
560	0634.313.354	O-RING	1		00.00.0000		34X5			5	0,000	
570	4139.331.127	SUCTION TUBE	1		00.00.0000					5	0,000	
572	4139.301.617	TAB WASHER	1		00.00.0000					5	0,000	
574	0636.015.225	HEXAGON BOLT	2		00.00.0000		M8X18			5	10	
580	0750.131.003	SCREEN INSERT	1		00.00.0000					3	0,000	
590	0634.313.018	O-RING	1		00.00.0000		82X3			5	0,000	
600	4139.331.145	COVER	1		00.00.0000					5	0,000	

VKF Incidence factor

OTK Optional technical kit

ID Identification (output code)

SP Supplier plant





Pos.	Material number	Name	VKF	Amend. no.	Amend. start	Prod. no.	Material feature / tech. info.	OTK	External material no.	ID	Weight	SP
20	---	SCREW PLUG	1		00.00.0000		SEG.2+3 *M33X2.0*DICHTRING			3	0,000	
---	0636.302.099	SCREW PLUG	1		00.00.0000		M33X2			5	0,000	
---	0634.801.227	SEALING RING	1		00.00.0000		33X39			5	4,700	
150	---	CAP SCREW	1		00.00.0000		M16			3	0,000	
---	0736.101.046	CAP SCREW	1		00.00.0000		M16			5	0,000	
170	---	WASHER	1		00.00.0000		WTB 0730 005 591(2)-A= 1,00- 2,60(ABSTUFUNG:0,17MM)			3	0,000	
---	0730.005.601	WASHER	1		00.00.0000		A=2,60 IN 0730 005 591(2)			5	0,000	
---	0730.005.600	WASHER	1		00.00.0000		A=2,50 IN 0730 005 591(2)			5	0,000	
---	0730.005.599	WASHER	1		00.00.0000		A=2,00 IN 0730 005 591(2)			5	0,000	
---	0730.005.598	WASHER	1		00.00.0000		A=1,90 IN 0730 005 591(2)			5	0,000	
---	0730.005.597	WASHER	1		00.00.0000		A=1,80 IN 0730 005 591(2)			5	0,000	
---	0730.005.596	WASHER	1		00.00.0000		A=1,70 IN 0730 005 591(2)			5	0,000	
---	0730.005.595	WASHER	1		00.00.0000		A=1,50 IN 0730 005 591(2)			5	0,000	
---	0730.005.594	WASHER	1		00.00.0000		A=1,20 IN 0730 005 591(2)			5	0,000	
---	0730.005.593	WASHER	1		00.00.0000		A=1,10 IN 0730 005 591(2)			5	0,000	
---	0730.005.592	WASHER	1		00.00.0000		A=1,00 IN 0730 005 591(2)			5	0,000	
450	---	WASHER	1		00.00.0000		WTB 0730 106 995(2)-A= 0,50- 1,00(ABSTUFUNG:0,25MM)			3	0,000	
---	0730.003.074	WASHER	1		00.00.0000		A=1,00 IN 0730 106 995(2)			5	0,000	
---	0730.106.997	WASHER	1		00.00.0000		A=0,80 IN 0730 106 995(2)			5	0,000	
---	0730.106.996	WASHER	1		00.00.0000		A=0,50 IN 0730 106 995(2)			5	0,000	
500	0501.007.917	CONVERTER	1	C0100478 0E10	00.00.0000	00.00.0000				3	0,000	
/10	0501.212.243	TURBINE WHEEL	1		00.00.0000		KPL.			5	0,000	
/50	0735.368.102	AXROLLER BEAR	1		00.00.0000		65,0X92,0X18,0 FA.INA			5	0,000	
/60	0501.212.241	STATOR	1		00.00.0000		KPL.			5	0,000	
/70	0730.105.463	AXIAL WASHER	2		00.00.0000		A=1,00			5	0,000	
/80	0501.318.600	FREE WHEEL RING	1		00.00.0000					5	0,000	
/90	0635.330.035	BALL BEARING	2		00.00.0000		70X110X13			5	0,433	
/120	0735.470.101	ROLLER	20		00.00.0000		10,0X30,0 FA.INA			5	0,000	
/130	0501.212.239	PUMP WHEEL	1		00.00.0000		KPL.			5	0,000	
/140	0501.322.570	CIRCUIT COVER	1		00.00.0000					5	0,000	

VKF Incidence factor

OTK Optional technical kit

ID Identification (output code)

SP Supplier plant



Pos.	Material number	Name	VKF	Amend. no.	Amend. start	Prod. no.	Material feature / tech. info.	OTK	External material no.	ID	Weight	SP
/142	0631.306.158	CYLINDRICAL PIN	2		00.00.0000		8X14			5	0,000	
/150	0501.323.973	PLATE PISTON	1	C0100391 0F10	00.00.0000	00.00.0000				5	0,000	
/152	0501.318.585	CUP SPRING	1		00.00.0000					5	0,000	
/160	0501.212.249	ICLUTCH DISC	2		00.00.0000		KPL.			5	0,000	
/170	---	OCLUTCH DISC	2		00.00.0000		WTB 0501 318 588(2)			3	0,000	
---	0501.318.589	OCLUTCH DISC	2		00.00.0000					5	0,000	
---	0501.318.590	OCLUTCH DISC	2		00.00.0000					5	0,000	
/174	0501.322.005	CYLINDRICAL PIN	12		00.00.0000					5	0,000	
/176	0501.319.016	WASHER	4		00.00.0000					5	0,000	
/178	0501.318.591	COMPRSPRING	4		00.00.0000					5	0,000	
/180	0501.327.451	END SHIM	1	Z0000562 4610	24.11.2009	24.11.2009				5	0,000	
/190	0501.322.576	SEALING RING	1		00.00.0000					5	0,000	
/200	0501.322.575	SEALING RING	1		00.00.0000					5	0,000	
/230	0634.402.140	R-RING	1		00.00.0000		50X2,5			5	4	
/240	0636.101.950	CAP SCREW	24		00.00.0000		M10X30			5	0,026	
/250	0501.321.624	O-RING	1		00.00.0000					5	0,000	
/260	0750.116.266	BALL BEARING	1		00.00.0000		WTB 16010-JC3 DIN625			3	0,000	
/270	0635.290.050	AXIAL WASHER	1		00.00.0000		65X90X1			5	0,000	
/280	0635.900.523	AXNEEDLE CAGE	1		00.00.0000		65X90X3			5	0,000	
/290	0635.900.521	HOUSING DISC	1		00.00.0000		67X90X5,25			5	0,000	
/310	0636.015.614	HEXAGON BOLT	36		00.00.0000		M10X22			5	0,000	
/312	0630.003.030	WASHER	36		00.00.0000					5	0,002	
/480	0501.317.956	PROTECTING CAP	1		00.00.0000					5	0,000	
/490	0501.317.957	PROTECTING CAP	1		00.00.0000					5	0,000	

VKF Incidence factor

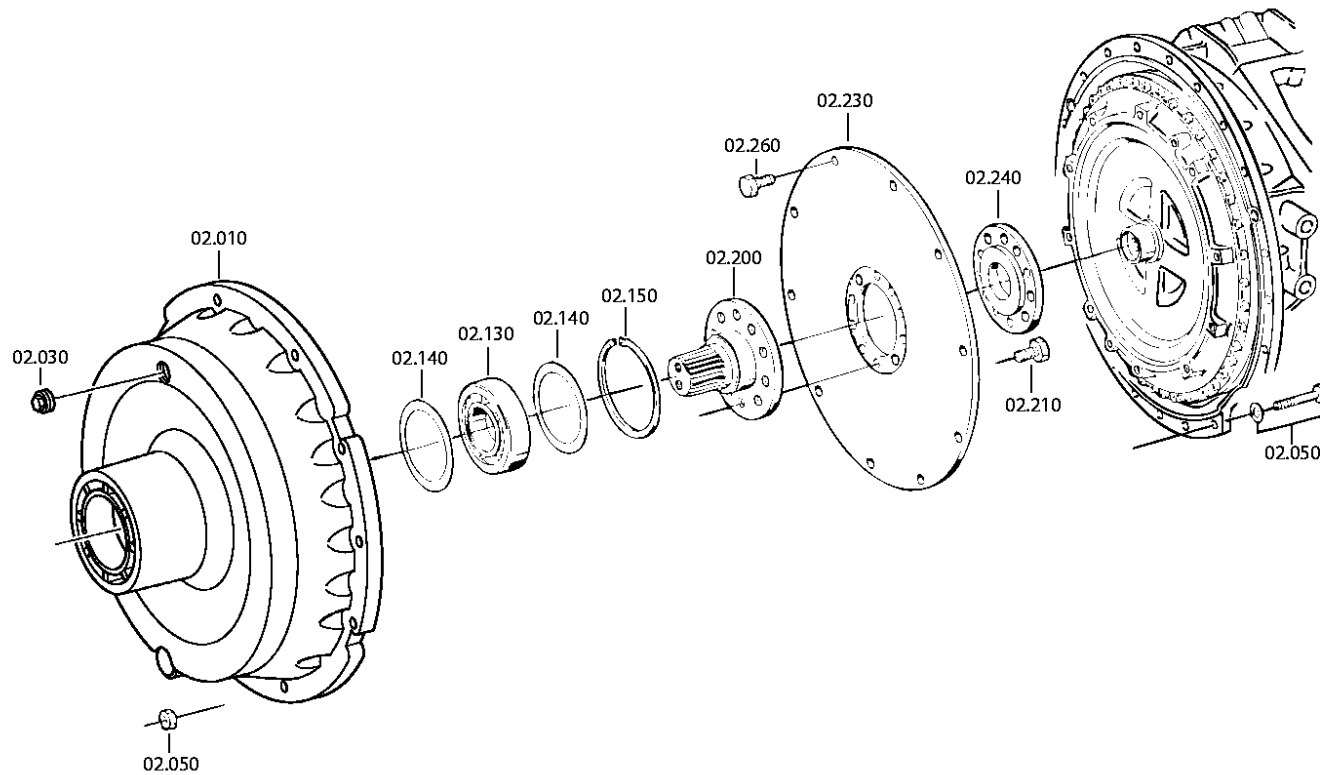
OTK Optional technical kit

ID Identification (output code)

SP Supplier plant



Figure: 004.62.06
Figure:
Figura:



Parts list
Page 1 from 1

Material number: 4235.065.001 6 HP 602 S NMOT /
Plant: 004.62.06-1
Material-assembly-group-no: 4235.102.001



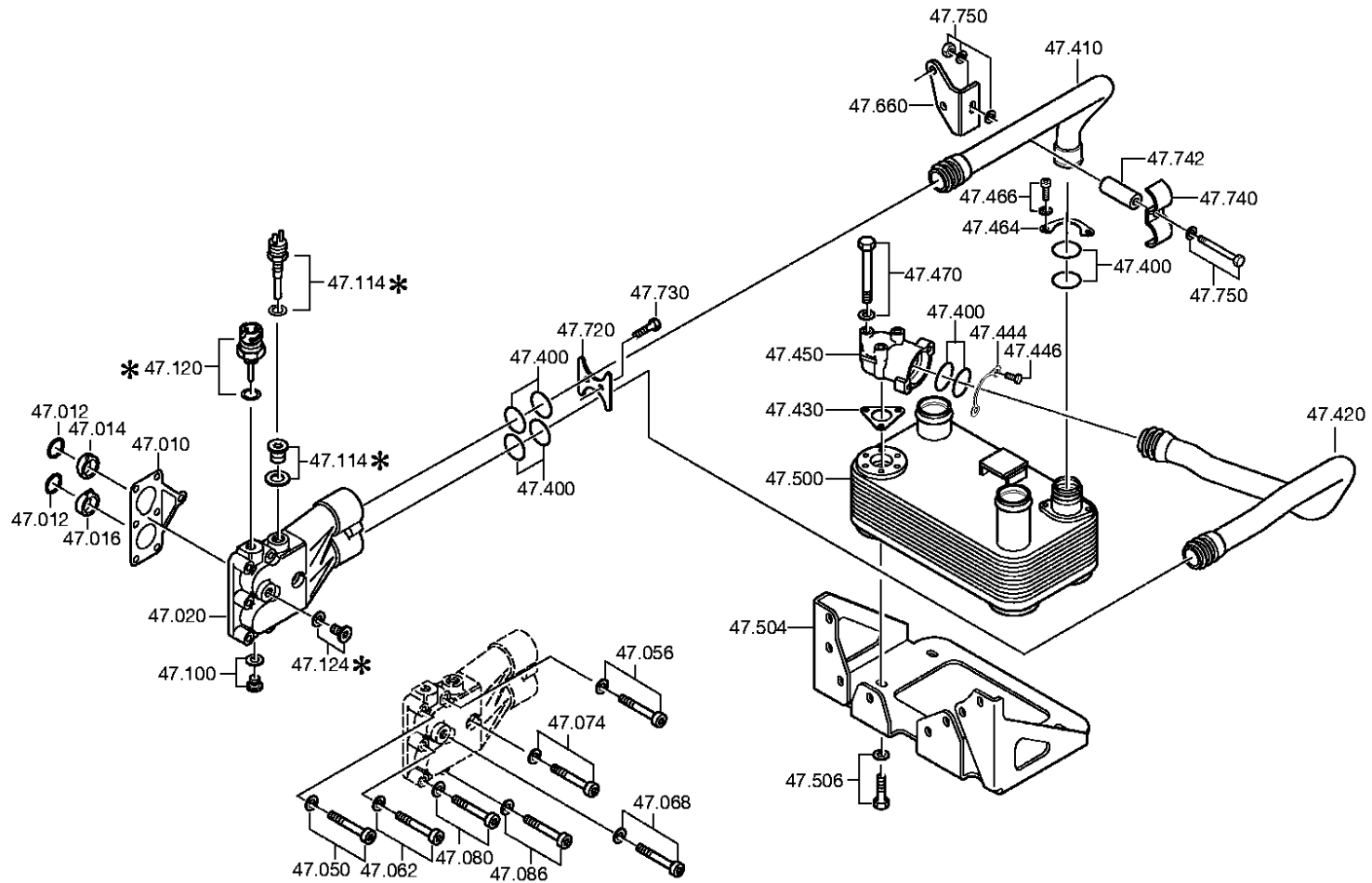
Pos.	Material number	Name	VKF	Amend. no.	Amend. start	Prod. no.	Material feature / tech. info.	OTK	External material no.	ID	Weight	SP
10	5079.302.002	HOUSING	1		00.00.0000					5	0,000	
30	---	SCREW PLUG	1		00.00.0000		M30X1,5 *100N.M*O. DICHTRG.			3	0,000	
---	0636.301.054	SCREW PLUG	1		00.00.0000		M30X1,5			5	0,000	
50	---	BOLT+NUT	11		00.00.0000		M10X60 DIN931ALT/8.8 A3C			3	0,000	
---	0636.010.071	HEXAGON BOLT	11		00.00.0000		M10X60			5	0,044	
---	0630.001.048	WASHER	11		00.00.0000					5	3,400	
---	0637.006.125	HEXAGON NUT	11		00.00.0000		M10			5	10	
130	0750.116.418	BALL BEARING	1		00.00.0000		65,0X120,0X23,0			5	0,000	
140	---	SHIM RING	2		00.00.0000		WTB -A= 0,10- 1,00(ABSTUFUNG:0,30MM)			3	0,000	
---	0630.000.133	SHIM RING	2		00.00.0000		100X120X1			5	25	
---	0630.000.134	SHIM RING	2		00.00.0000		100X120X0,5			5	0,000	
---	0630.000.135	SHIM RING	2		00.00.0000		100X120X0,3			5	0,000	
---	0630.000.136	SHIM RING	2		00.00.0000		100X120X0,1			5	0,000	
150	0630.502.048	RETAINING RING	1		00.00.0000		120X4			5	80	
200	4139.330.192	FLANGE	1		00.00.0000		ENTHALT.IN 4139 330 191(1)			5	0,000	
210	---	HEXAGON BOLT	10		00.00.0000		M14X25 DIN933ALT/8.8			3	0,000	
---	0636.016.025	HEXAGON BOLT	10		00.00.0000		M14X25			5	51	
230	4139.330.144	WASHER	1		00.00.0000		ENTHALT.IN 4139 330 203(0)			5	0,000	
240	4139.330.394	BEARING FLANGE	1		00.00.0000					5	0,000	
260	---	HEXAGON BOLT	10		00.00.0000		M12X1,5X25 DIN961ALT/8. 8			3	0,000	
---	0636.021.005	HEXAGON BOLT	10		00.00.0000		M12X1,5X25			5	36	
280	---	HEXAGON BOLT	4		00.00.0000		M12X1,5X45 * SCHUTZHUELSE			3	0,000	
---	0636.021.083	HEXAGON BOLT	4		00.00.0000		M12X1,5X45			5	50	
300	4235.302.001	INPUT FLANGE	1		00.00.0000					5	0,000	
310	1240.304.117	WASHER	1		00.00.0000		ENTHALT.IN 1240 304 427(2)			5	0,000	
320	---	TAB WASHER	1		00.00.0000					3	0,000	
---	1250.304.353	TAB WASHER	1		00.00.0000		ENTHALT.IN 1313 304 043(2)			5	14	
330	---	HEXAGON BOLT	2		00.00.0000		M12X30 DIN933ALT/8.8 A3C			3	0,000	
---	0636.016.110	HEXAGON BOLT	2		00.00.0000		M12X30			5	0,030	

VKF Incidence factor

OTK Optional technical kit

ID Identification (output code)

SP Supplier plant





Pos.	Material number	Name	VKF	Amend. no.	Amend. start	Prod. no.	Material feature / tech. info.	OTK	External material no.	ID	Weight	SP
10	4139.301.635	GASKET	1		00.00.0000					5	0,000	
12	0634.313.628	O-RING	2		00.00.0000		41X5			5	0,000	
14	4139.301.613	INSERT	1		00.00.0000					5	0,000	
16	4139.301.614	INSERT	1		00.00.0000					5	0,000	
20	---	CONNPART	1	C0100195 5F10	00.00.0000	00.00.0000	WTB			3	0,000	
---	4139.347.248	CONNPART	1		00.00.0000		ENTHALT.IN 4139 347 194(0)			5	0,000	
---	4149.347.322	CONNPART	1		00.00.0000		ZBR			5	0,000	
50	---	CAP SCREW	1		00.00.0000		M8X45 ISO4762/8.8 A3C			3	0,000	
---	0636.101.685	CAP SCREW	1		00.00.0000		M8X45			5	0,020	
---	0630.001.075	WASHER	1		00.00.0000					5	0,002	
56	---	CAP SCREW	1		00.00.0000		M8X45 ISO4762/8.8 A3C			3	0,000	
---	0636.101.685	CAP SCREW	1		00.00.0000		M8X45			5	0,020	
---	0630.001.075	WASHER	1		00.00.0000					5	0,002	
62	---	CAP SCREW	1		00.00.0000		M8X45 ISO4762/8.8 A3C			3	0,000	
---	0636.101.685	CAP SCREW	1		00.00.0000		M8X45			5	0,020	
---	0630.001.075	WASHER	1		00.00.0000					5	0,002	
68	---	CAP SCREW	1		00.00.0000		M8X45 ISO4762/8.8 A3C			3	0,000	
---	0636.101.685	CAP SCREW	1		00.00.0000		M8X45			5	0,020	
---	0630.001.075	WASHER	1		00.00.0000					5	0,002	
74	---	CAP SCREW	1		00.00.0000		M8X45 ISO4762/8.8 A3C			3	0,000	
---	0636.101.685	CAP SCREW	1		00.00.0000		M8X45			5	0,020	
---	0630.001.075	WASHER	1		00.00.0000					5	0,002	
80	---	CAP SCREW	1		00.00.0000		M8X45 ISO4762/8.8 A3C			3	0,000	
---	0636.101.685	CAP SCREW	1		00.00.0000		M8X45			5	0,020	
---	0630.001.075	WASHER	1		00.00.0000					5	0,002	
86	---	CAP SCREW	1		00.00.0000		M8X45 ISO4762/8.8 A3C			3	0,000	
---	0636.101.685	CAP SCREW	1		00.00.0000		M8X45			5	0,020	
---	0630.001.075	WASHER	1		00.00.0000					5	0,002	
100	0501.326.079	SCREW PLUG	1	Z0000189 9810	26.08.2009	26.08.2009	M10X1			5	0,000	
114	---	TEMPERATURE SENSOR	1	C0100184 9F10	00.00.0000	00.00.0000				3	0,000	

VKF Incidence factor

OTK Optional technical kit

ID Identification (output code)

SP Supplier plant



Pos.	Material number	Name	VKF	Amend. no.	Amend. start	Prod. no.	Material feature / tech. info.	OTK	External material no.	ID	Weight	SP
---	0501.322.528	TEMPERATURE SENSOR	1		00.00.0000					5	0,000	
---	0634.801.151	SEALING RING	1		00.00.0000		14X20			5	2	
120	---	TEMPERATURE SENSOR	1	C0100672 4E10	00.00.0000	00.00.0000				3	0,000	
---	0501.322.530	TEMPERATURE SENSOR	1		00.00.0000					5	0,000	
---	0634.801.151	SEALING RING	1		00.00.0000		14X20			5	2	
124	---	SCREW PLUG	1		00.00.0000		M18X1,5 * 35N.M* DICHRING			3	0,000	
---	0636.302.021	SCREW PLUG	1		00.00.0000		M18X1,5			5	0,090	
---	0634.801.063	SEALING RING	1		00.00.0000		18X24			5	0,002	
400	0634.313.600	O-RING	8		00.00.0000		38X4			5	0,000	
410	4139.347.493	PIPE	1	C0100844 1D10	00.00.0000	00.00.0000				5	0,000	
420	4139.347.494	PIPE	1	C0100844 2D10	00.00.0000	00.00.0000				5	0,000	
430	4139.347.284	GASKET	1		00.00.0000					5	0,000	
444	4139.347.195	FLANGE	1		00.00.0000					5	0,000	
446	0636.015.367	HEXAGON BOLT	2		00.00.0000		M8X22			5	0,000	
450	4139.347.363	CONNPART	1		00.00.0000					5	0,000	
464	4139.347.495	BRACKET	1	C0100775 0D10	00.00.0000	00.00.0000				5	0,000	
466	---	CAP SCREW	2		00.00.0000		M8X16 ISO4762/8.8 A3C			3	0,000	
---	0636.101.680	CAP SCREW	2		00.00.0000		M8X16			5	12	
---	0630.001.075	WASHER	2		00.00.0000					5	0,002	
470	---	HEXAGON BOLT	3		00.00.0000		M8X60 ISO4014/8.8 A3C			3	0,000	
---	0636.010.375	HEXAGON BOLT	3		00.00.0000		M8X60			5	0,000	
---	0630.001.075	WASHER	3		00.00.0000					5	0,002	
500	0501.008.286	HEAT EXCHANGER	1	C0100943 9E10	00.00.0000	00.00.0000	SBK-WL-LF-EINTEILIGE OELLA			5	0,000	
504	4139.347.365	BRACKET	1		00.00.0000					5	0,000	
506	---	HEXAGON BOLT	4		00.00.0000		M10X22 DIN933ALT/8.8 A3C			3	0,000	
---	0636.015.387	HEXAGON BOLT	4		00.00.0000		M10X22			5	0,000	

VKF Incidence factor

OTK Optional technical kit

ID Identification (output code)

SP Supplier plant



Pos.	Material number	Name	VKF	Amend. no.	Amend. start	Prod. no.	Material feature / tech. info.	OTK	External material no.	ID	Weight	SP
---	0630.001.048	WASHER	4		00.00.0000					5	3,400	
660	4139.347.299	FIXING PLATE	1		00.00.0000					5	0,000	
720	4139.347.198	FIXING PLATE	1		00.00.0000					5	0,000	
730	0636.015.367	HEXAGON BOLT	2		00.00.0000		M8X22			5	0,000	
740	4139.347.301	BRACKET	1		00.00.0000					5	0,000	
742	0730.063.339	PIPE	1		00.00.0000		A=33,40 IN 0730 063 338(2)			5	0,000	
750	---	BOLT+NUT	1		00.00.0000		M8X55 ISO4014/8.8 A3C			3	0,000	
---	0636.010.374	HEXAGON BOLT	1		00.00.0000		M8X55			5	25	
---	0630.001.075	WASHER	1		00.00.0000					5	0,002	
---	0637.011.530	HEXAGON NUT	1		00.00.0000		M8			5	0,000	

VKF Incidence factor

OTK Optional technical kit

ID Identification (output code)

SP Supplier plant